

CS OTE

User manual for external users



OTE-COM Launcher Manager



List of contents

Used Abbreviations	2
1 Introduction	3
2 Configuration.....	3
2.1 System requirements	3
2.2 Distribution.....	3
2.3 Download	4
3 Installation of OTE Launcher Manager.....	5
4 Root certificates installation	7
5 Launch OTE Launcher Manager application	12
6 OTE Launcher Manager application interface	14
7 Launching the OTE-COM application	17
8 Uninstalling the OTE-COM application	18
9 OTE Launcher Manager Uninstall	18

Used Abbreviations

Abbreviation	Meaning
VDT	Intraday market
I.CA	First Certification Authority - Certificate Authority
OTE	The company OTE, a.s.
RÚT	Registered participant in CS OTE

1 Introduction

This document describes the Application OTE Launcher Manager which is used to acquire, manage and run the up to date version of the intraday application OTE-COM gas.

2 Configuration

2.1 System requirements

Following operating systems are supported to start application OTE Launcher Manager or an application for OTE-COM.

- *Windows 7 (32bit)*
- *Windows 7 (64bit)*
- *Windows 10 (32bit)*
- *Windows 10 (64bit)*

2.2 Distribution

Application OTE Launcher Manager is created separately for different environments - production and test in 32-bit and 64-bit versions. All versions are available on the form IM in CS OTE portal. Reason for separate versions for production and test (Isotetest and Sandbox) is to minimize user errors (e.g. a test message sent by mistake to production). Each OTE Launcher Manager will contain visible information about environment for which it is intended. To access all environments (Production, Isotetest and Sandbox) it is necessary to have installed both versions of the OTE Launcher Manager application.

Version ID	Release date	Release notes	Install/Uninstall	Launch
Version 4.0.9	18.07.2018	Show		
Version 4.0.7	04.07.2018	Not installed		

2.3 Download

The appropriate version of OTE Launcher Manager can be downloaded by selecting the appropriate link:

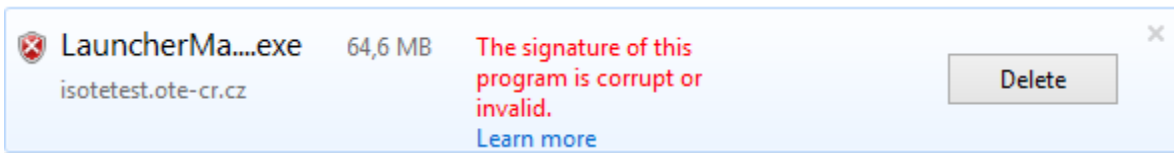
OTE Launcher Manager

Please use IM/BalM trading client application for access. Use OTE Launcher Manager to launching application, download here:

Win 64 bit: [OTE-COM Gas x64](#)
 Win 32 bit: [OTE-COM Gas x32](#)

Whether you need a 32-bit or 64-bit version depends on your operating system. [Here](#) you can find which Windows operating system you are running.

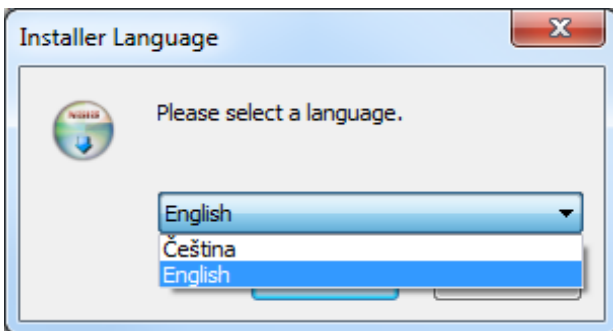
In certain cases you might see following warning after running the installation file directly from Internet Explorer. (Using “Run” button in finished downloads dialog.)



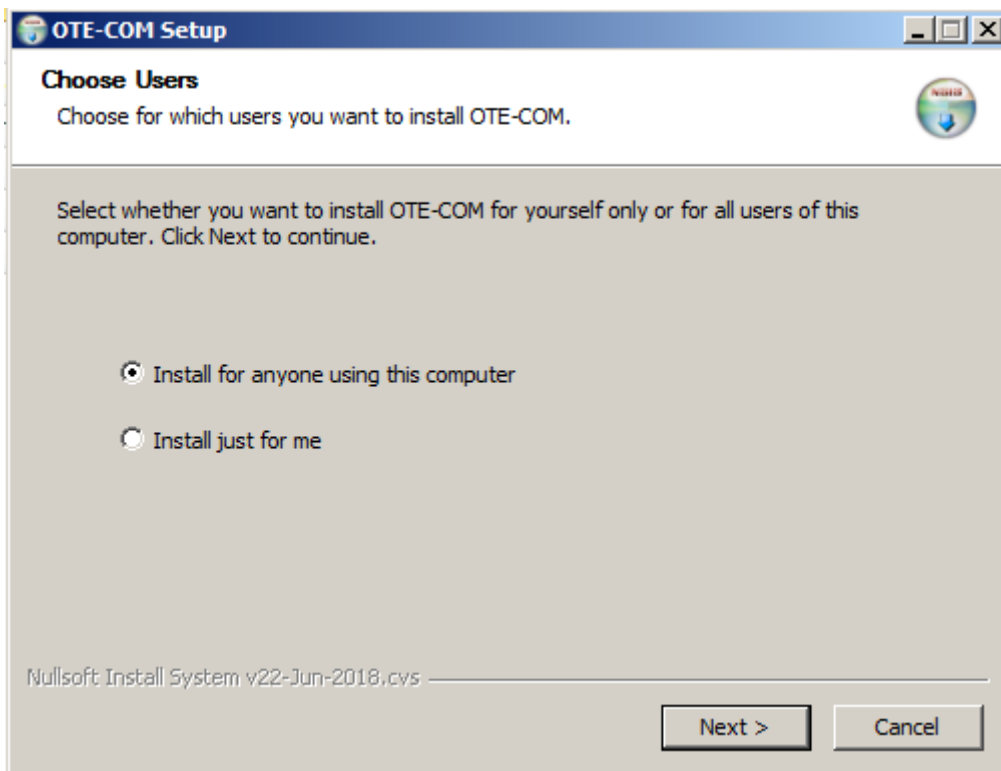
To proceed further use the right mouse button and select "Run Anyway".

3 Installation of OTE Launcher Manager

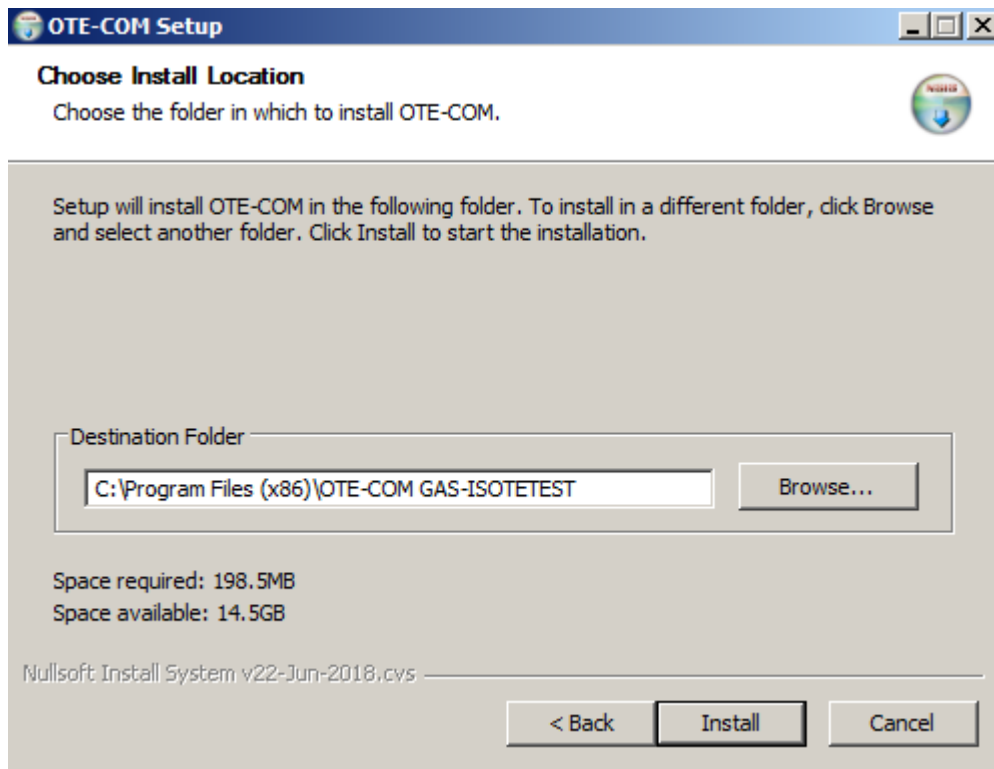
After downloading the appropriate installation package, you can start the installation by double-clicking on the selected file.



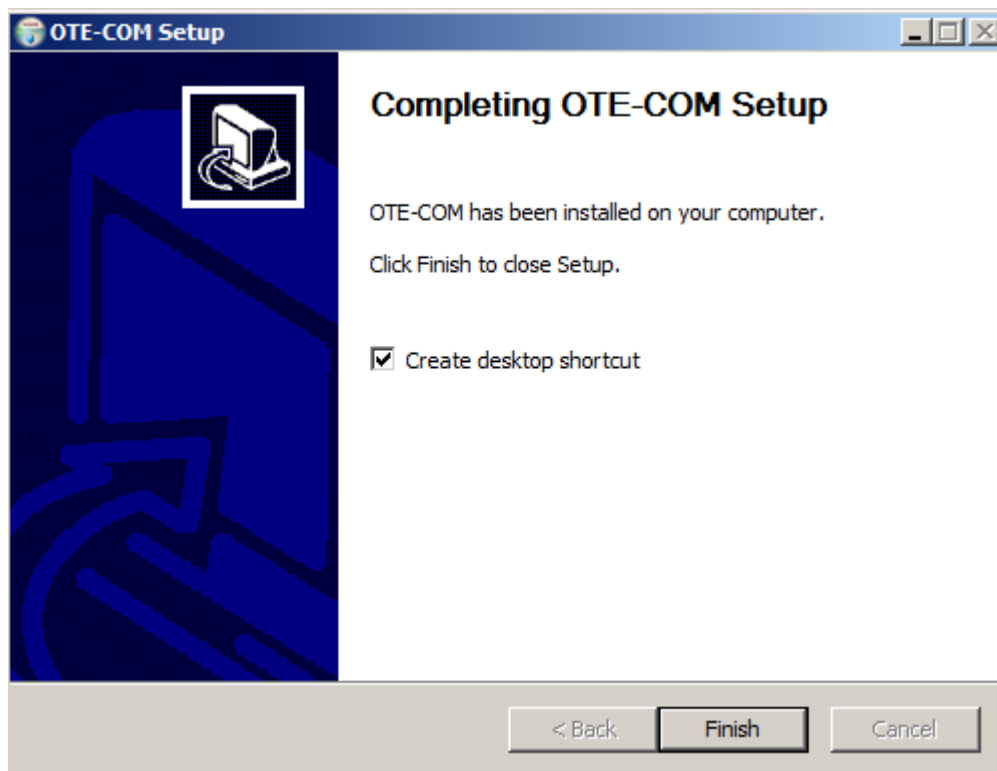
You can then choose whether you want to install OTE Launcher Manager for yourself only or for all users of your computer.



In the next step, you can choose the location in which to install the OTE Launcher Manager.



Subsequently, click on the install button to start installation. After a successful installation confirmation window appears.

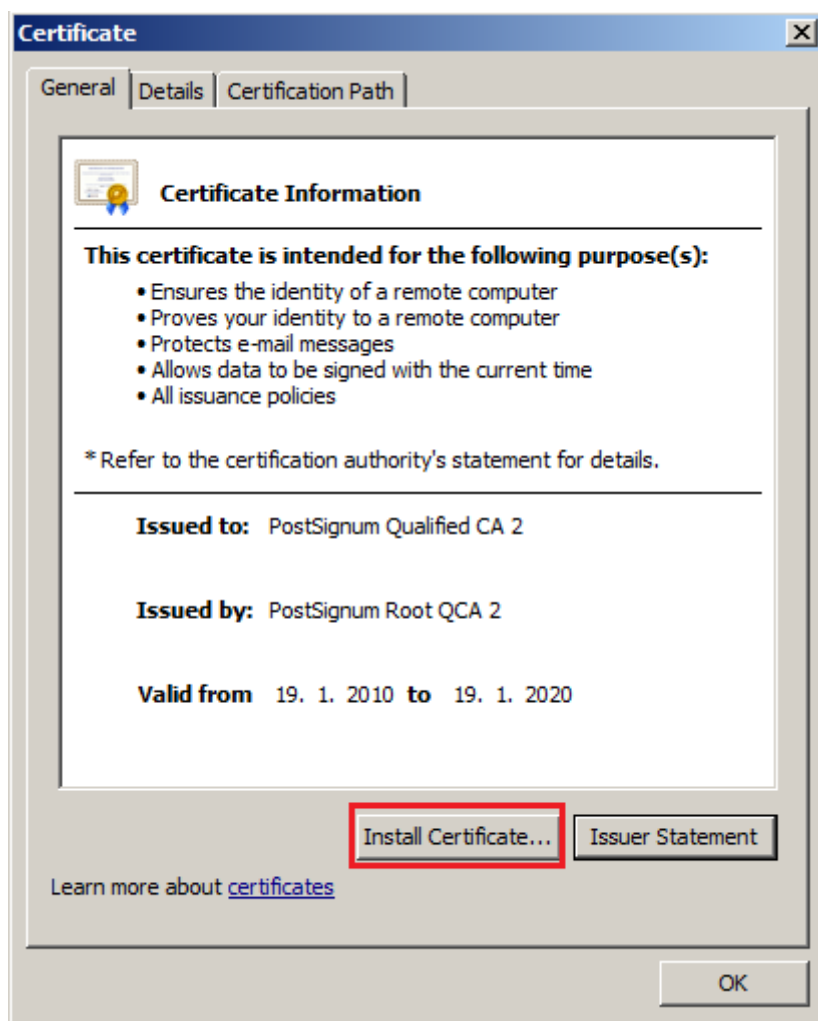


4 Root certificates installation

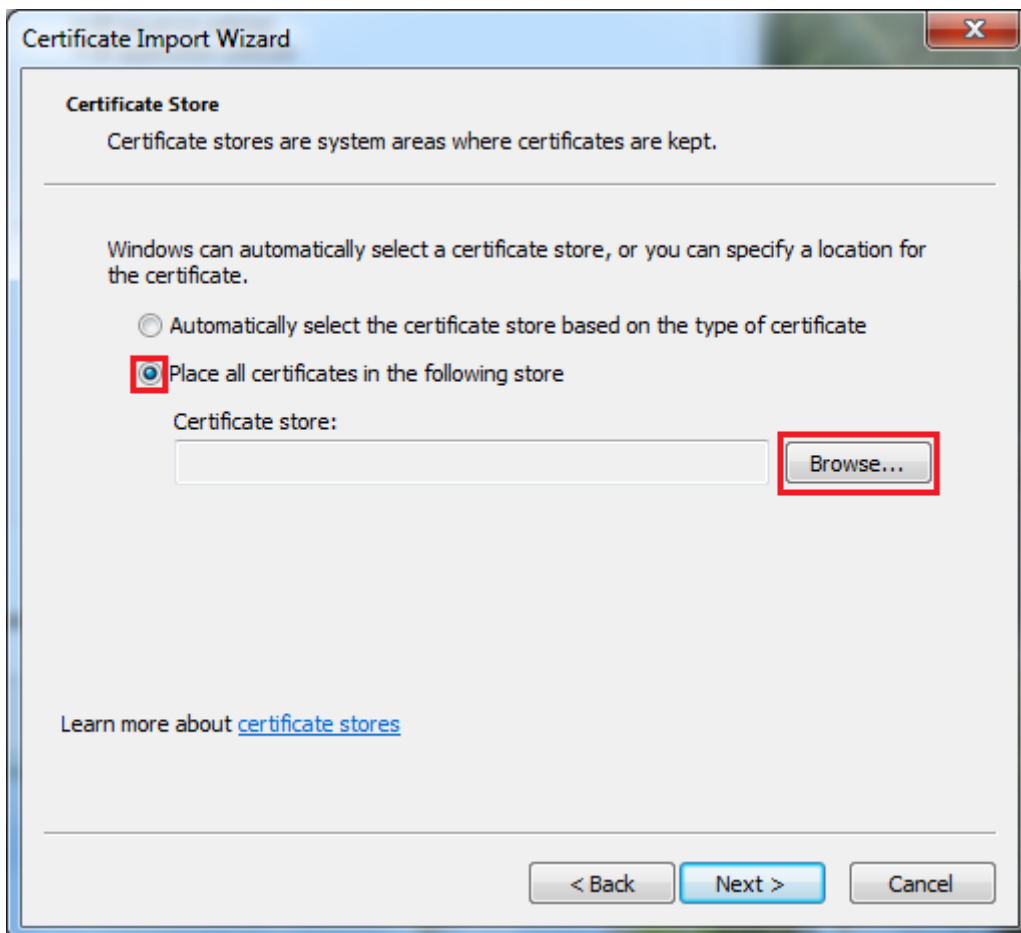
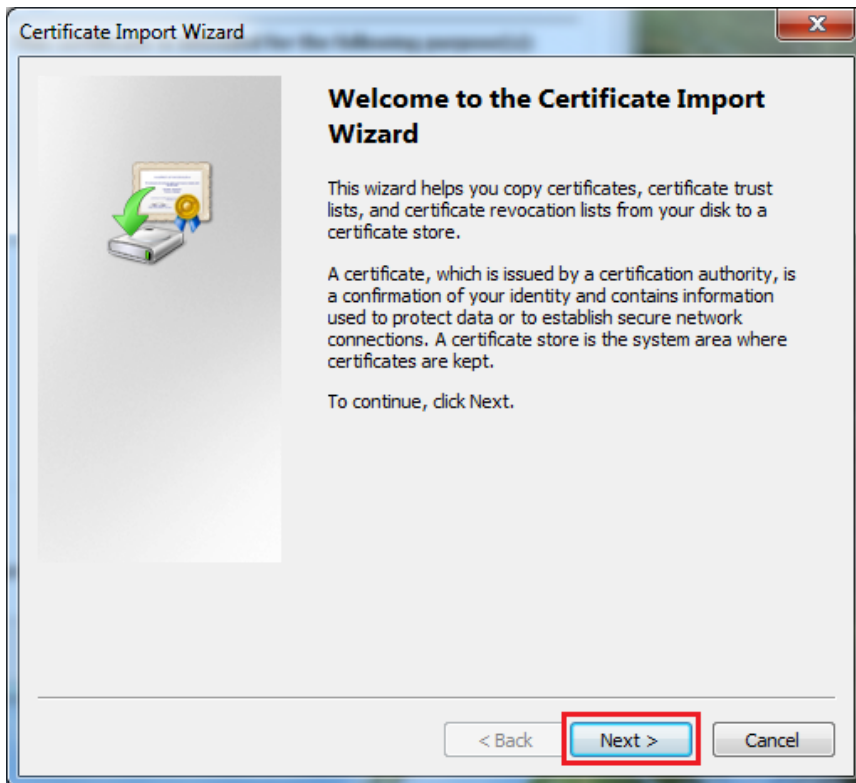
To access the applications for IM is required to have imported the root CA certificates to the subscriber repository "Trusted Root Certification Authorities".

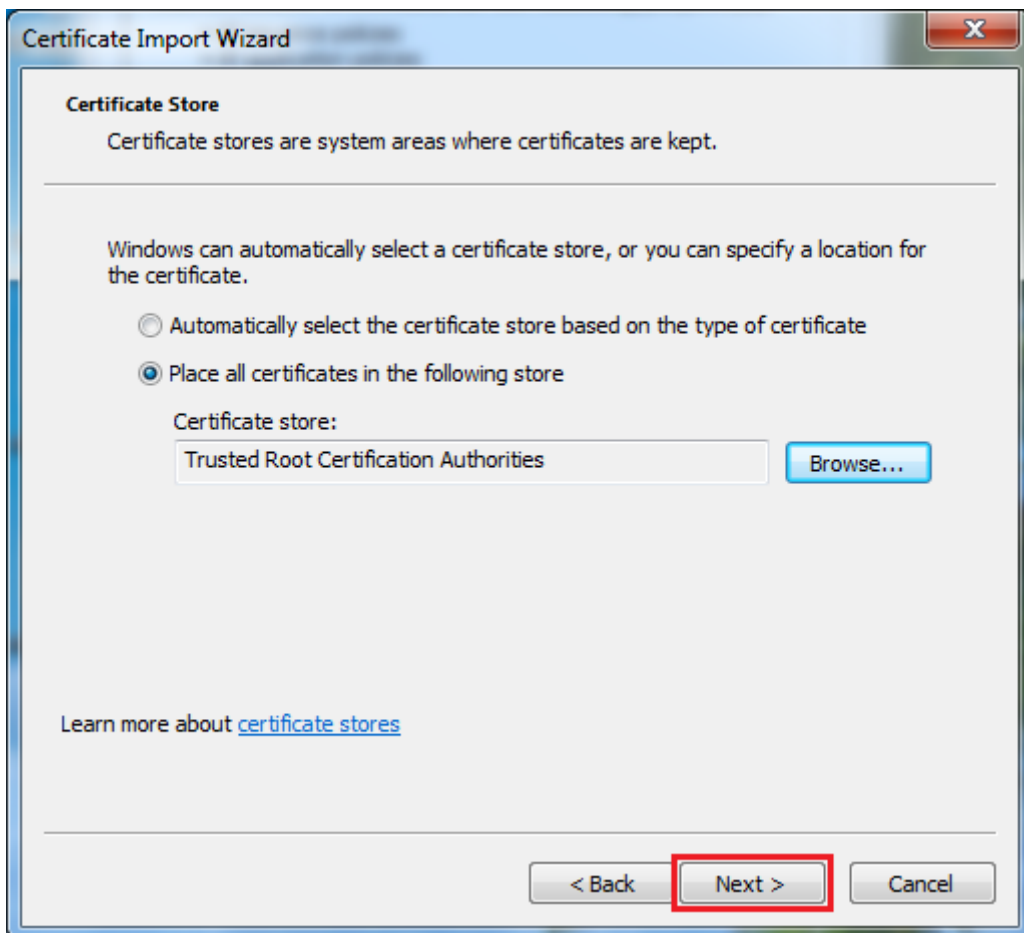
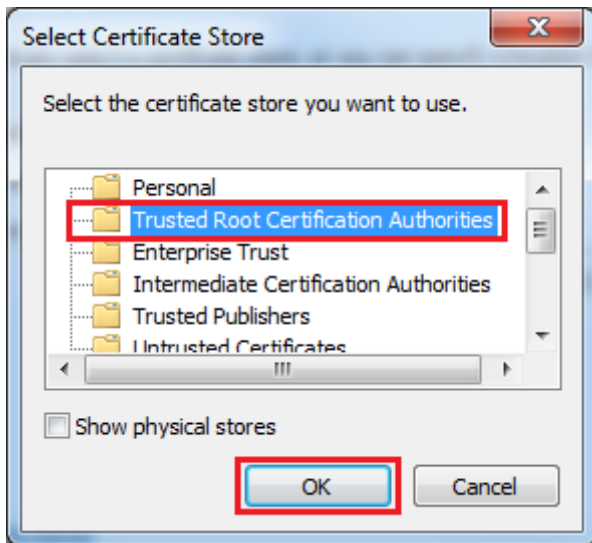
Example import of Post Signum root CA certificate.

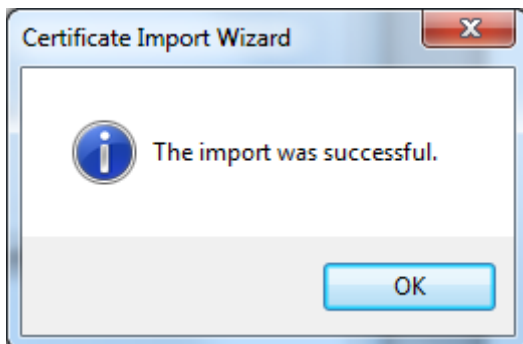
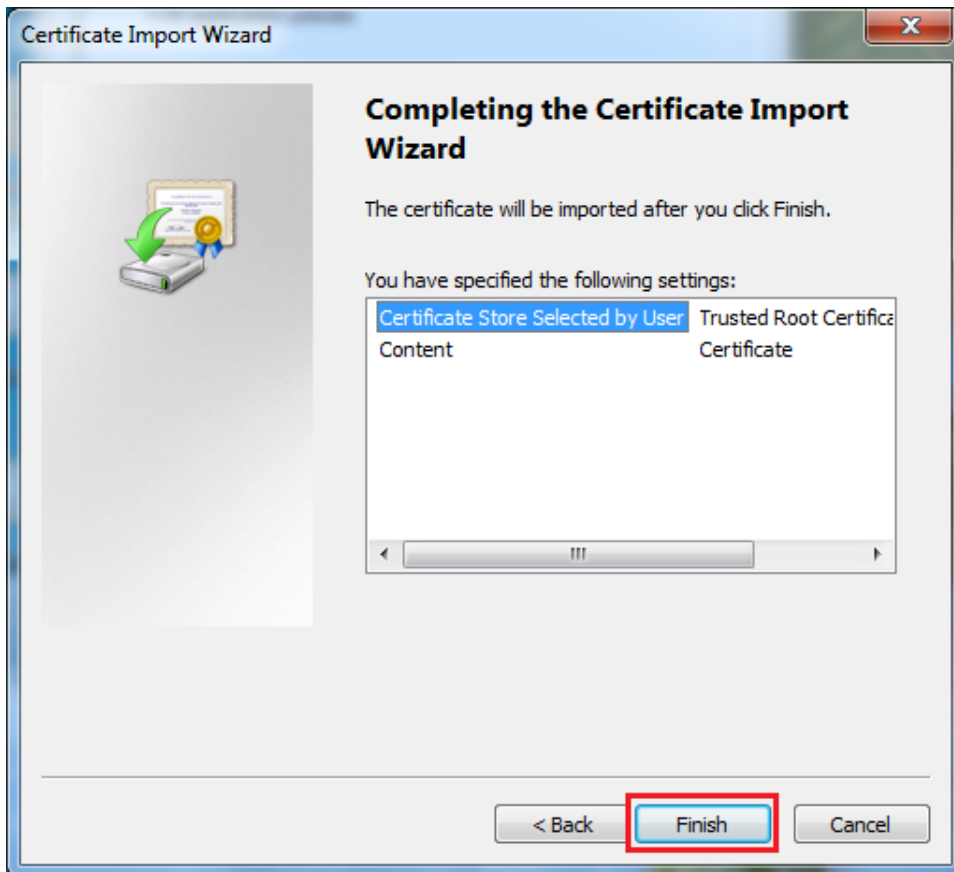
Doubleclick on file with root CA certificate and follow up the steps below:



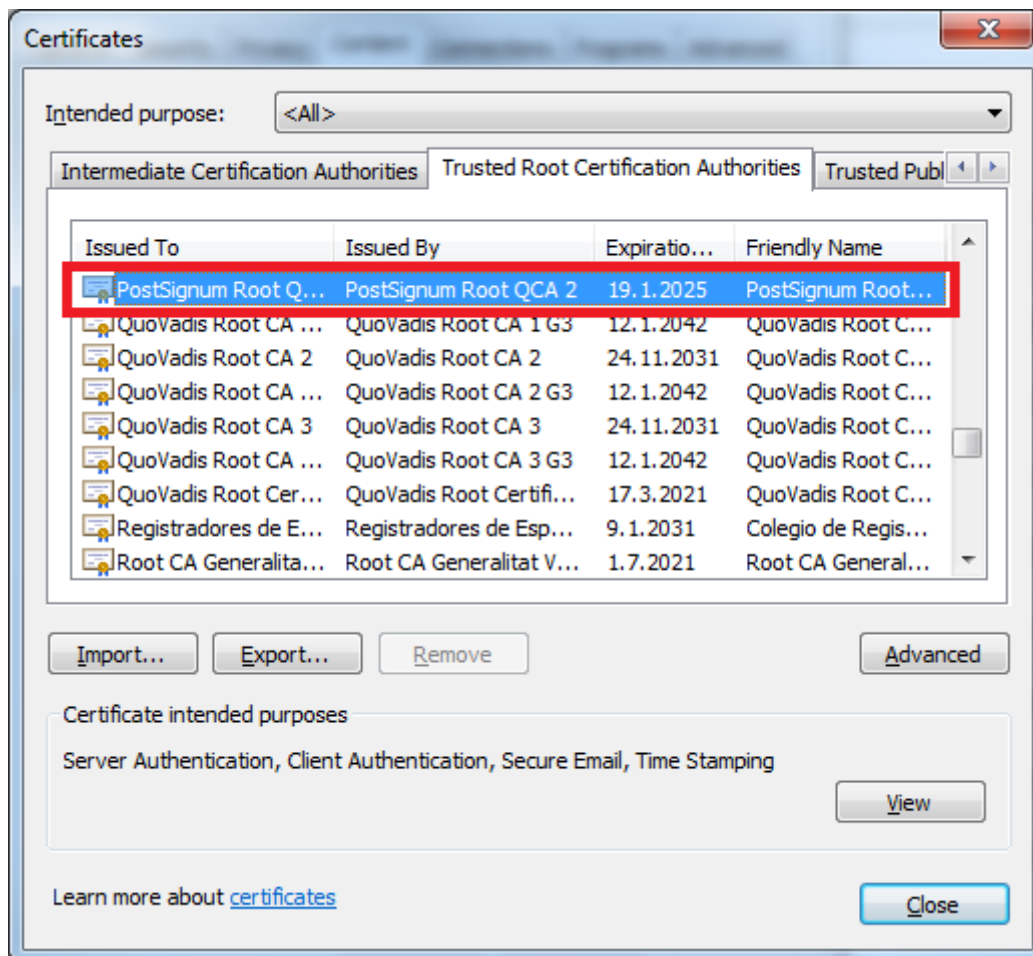
Press button „Install certificates“ to instal it on your workstation.



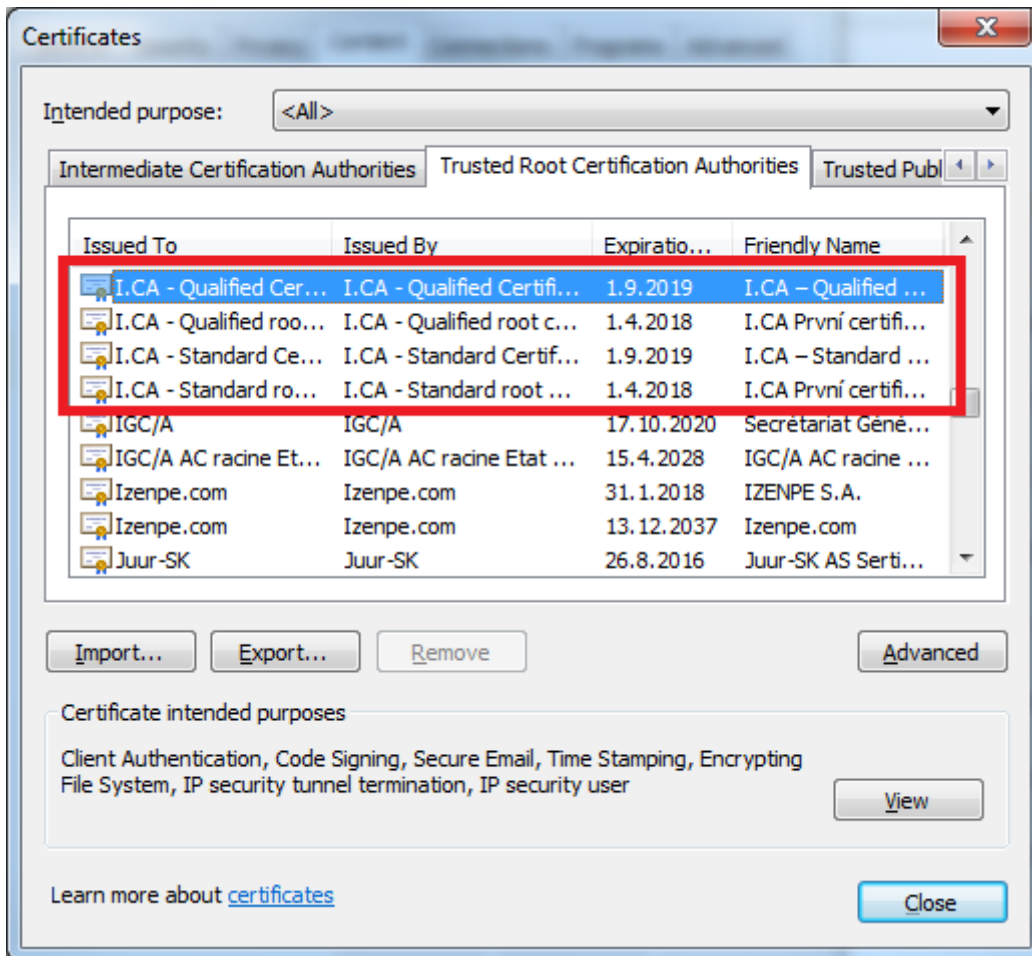




When the import is successful, root certificates are presented in the list of „Trusted Root Certification Authorities“ tab.



Please note that in case of issuance of certificates from so called Intermediate certificate authority is necessary to have imported both root and intermediate CA certificate. An example is the ICA Qualified as a certification authority under the first certification (První certifikační) authority. In this case both certificates must be imported in the Trusted Root Certification Authorities repository.



For more information about installing the root certificate into the trusted root repository please follow instruction of your certification authority.

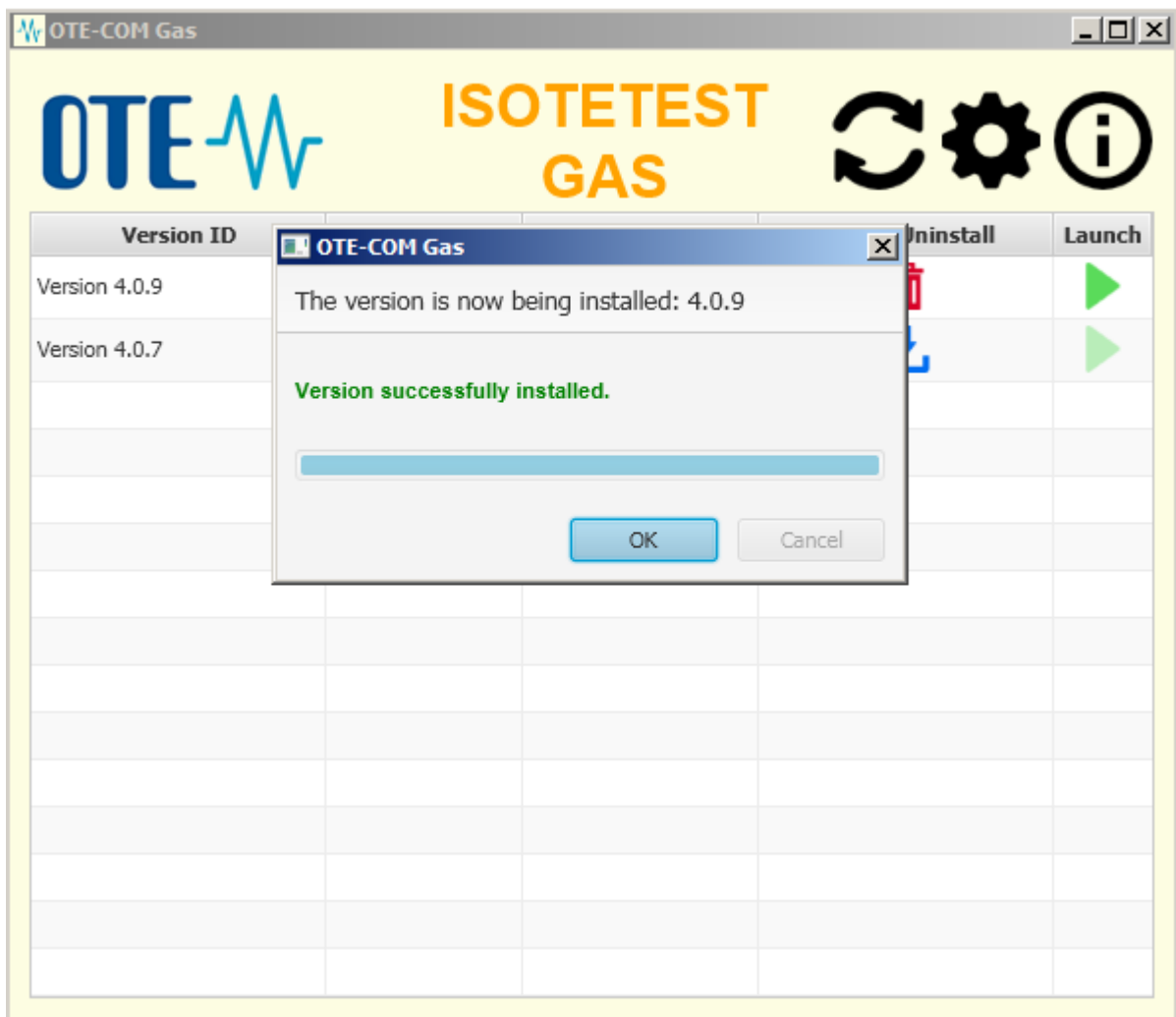
5 Launch OTE Launcher Manager application

OTE Launcher Manager application can be open from a windows start menu shortcut, which is automatically created during installation. Alternatively, you can open the application directly from the location selected during installation by running the file launcher-manager.exe.




During every start LaunchManager check OTE servers for latest version of OTE-COM application. In the case there is newer version then the one currently installed, you will be notified as shown below.

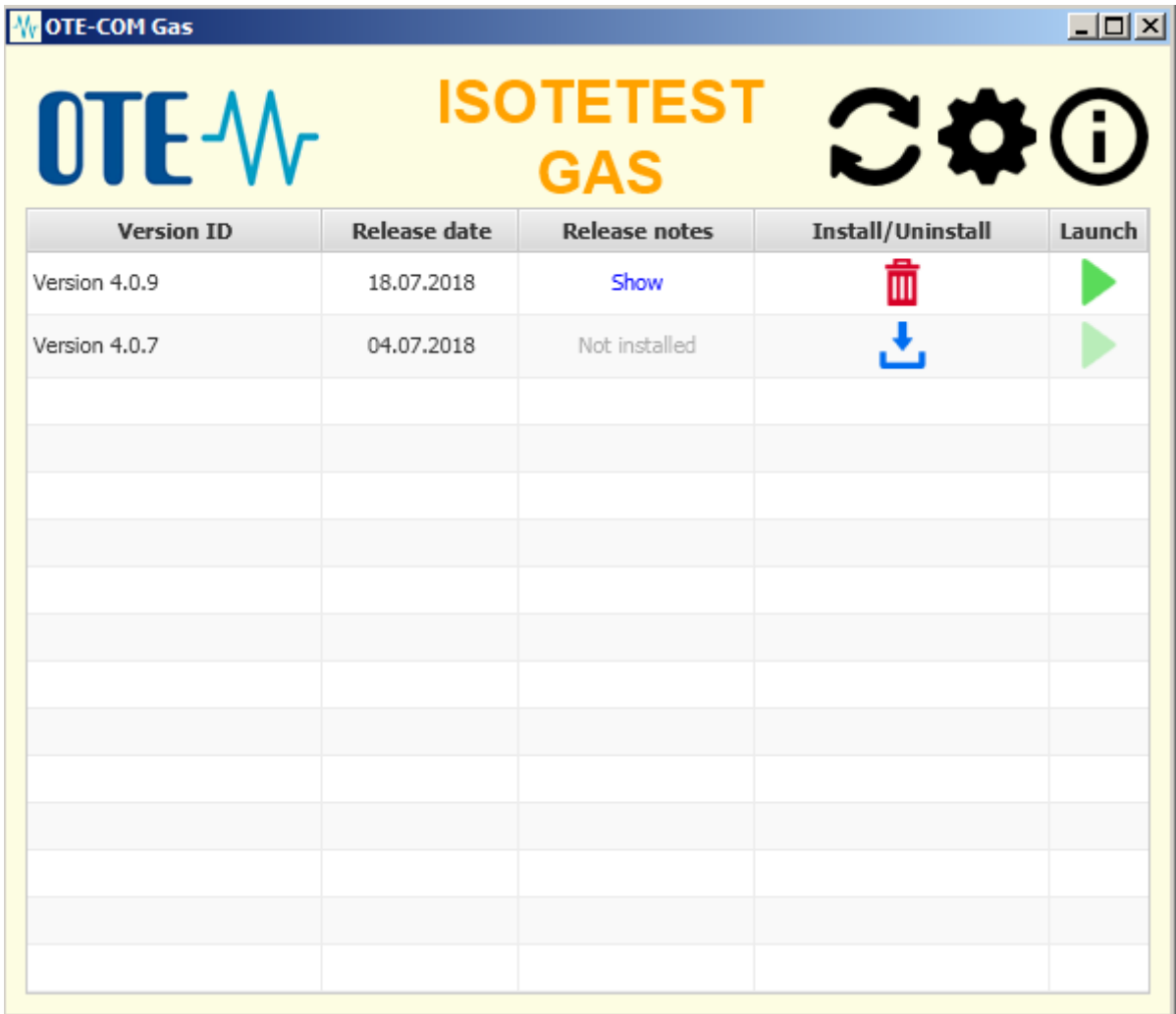



If you want immediately install the new version, confirm the displayed dialog with "OK". Alternatively, you can close the dialog by pressing "Cancel" and install the new version and later from the main screen.

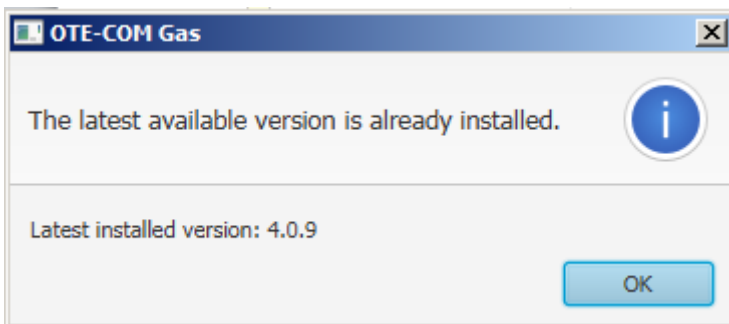


6 OTE Launcher Manager application interface

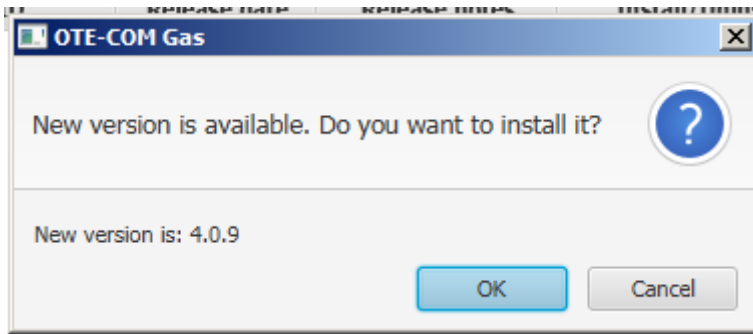
In the OTE Launcher Manager environment you can see an overview of the available versions for OTE-COM, which you can download and install , and then run . You can also uninstall  selected versions or read release information by clicking on "view".




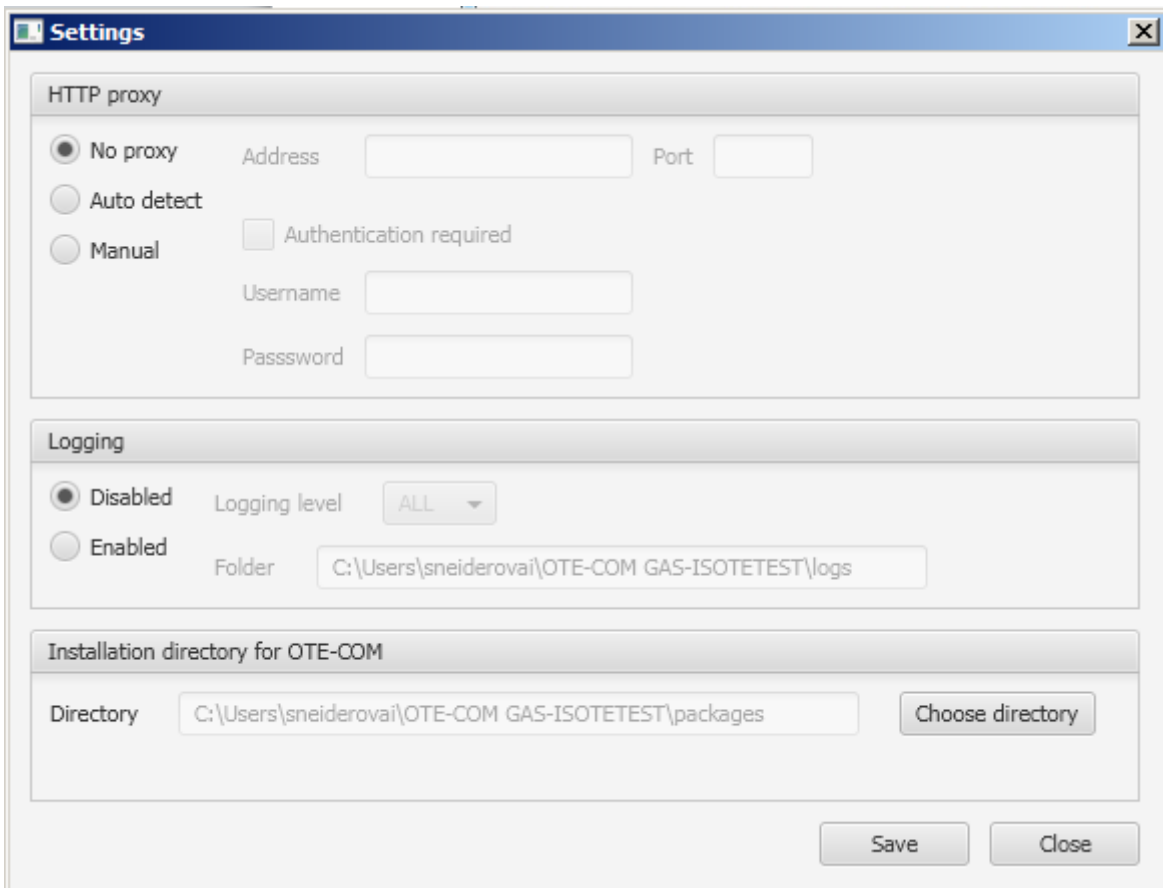
To check the availability of the latest version of the OTE-COM  button is used. In the case you already have the latest version installed, you will be informed in popup dialog.



Otherwise, you will be able to download and install the new version.




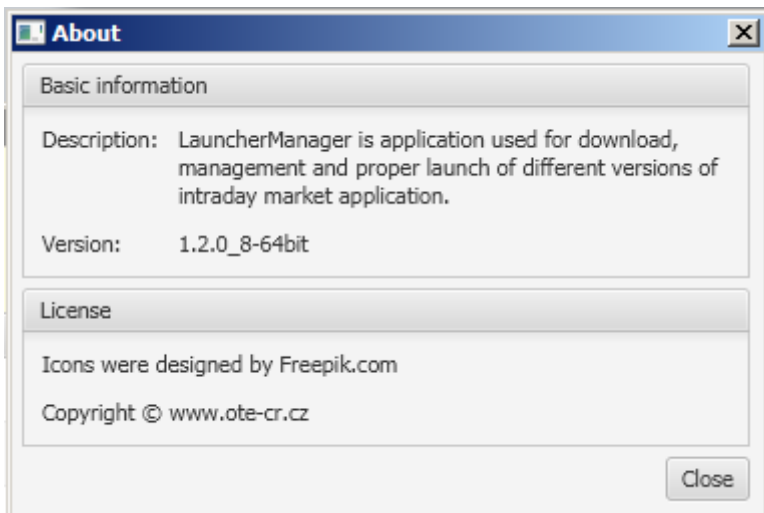
By clicking on the  button you can perform certain OTE Launcher Manager settings. Specifically HTTP proxy connection settings and logging options. Recently, it is possible to define installation directory for OTE-COM here. You can also find the location of the events log file. After changing individual parameters click on the "Save" button.




Detailed information about the installed OTE Launcher Manager version can be found by clicking on

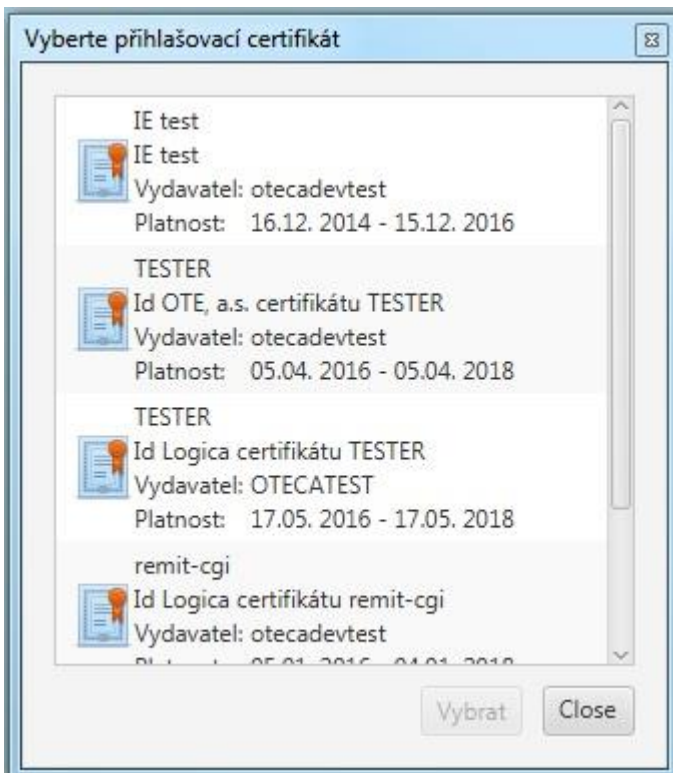


the  button. There you will find the current version number, description of the application and licensing information.



7 Launching the OTE-COM application

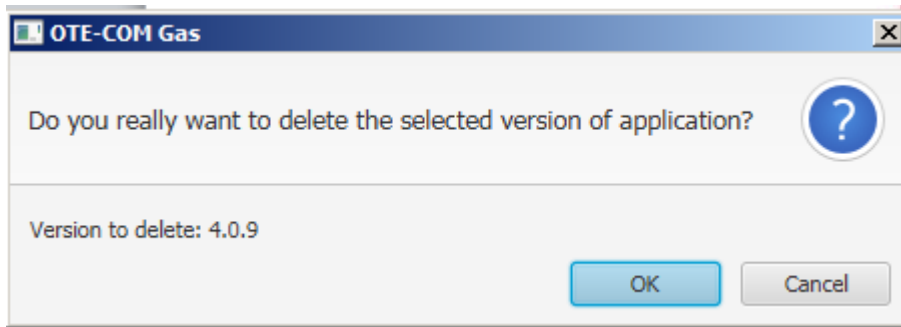
You can launch selected version of OTE-COM application by clicking on  button. Subsequently, a dialog box appears with list of security certificates for logging in to the OTE-COM application. Click on the selected certificate and confirm by pressing the " Select" button in the lower left corner.



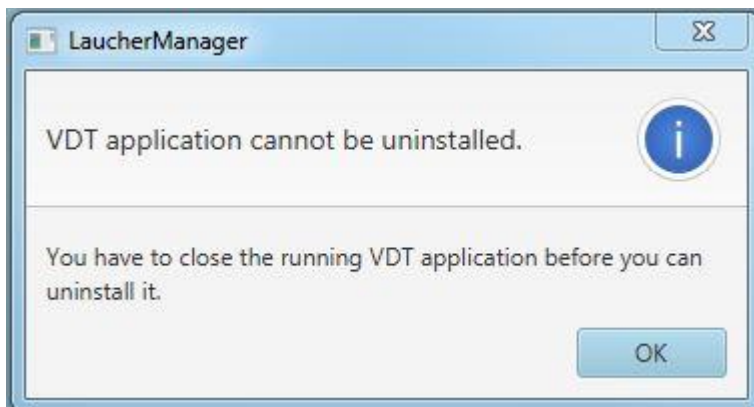
If you have chosen the correct security certificate OTE-COM application start instantly. http://www.ote-cr.cz/registrace-a-smlouvy/pristup-do-cs-ote/konfigurace-pc?set_language=cs

8 Uninstalling the OTE-COM application

The OTE-COM application version that you no longer wish to use can be uninstalled directly from the OTE Launcher Manager interface by clicking on  button. Dialog appears asking if you want to really remove that particular version. To confirm, please click on OK button.



Specific versions for OTE-COM cannot be running during the uninstallation, otherwise you will see the following dialog.



If a dialog box appears repeatedly and you are sure the OTE-COM applications is not running please restart your computer and try again.

9 OTE Launcher Manager Uninstall

OTE Launcher Manager application itself can be uninstalled directly from the Start menu by clicking on "uninstall" in the application folder. Alternatively, the application can be uninstalled following different uninstall depending on your operating system.

- **Windows 7**

- Open Programs and Features by clicking the Start button Picture of the Start button, clicking Control Panel, clicking Programs, and then clicking Programs and Features. Select the OTE Launcher Manager and then click Uninstall.

- **Windows 10**

On the Start menu select Settings. Select System > Apps & features. Select the OTE Launcher Manager, and then select Uninstall. Follow the directions on the screen.