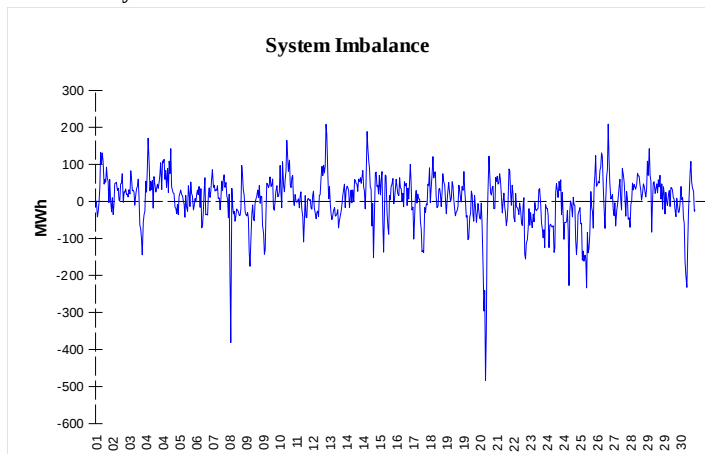


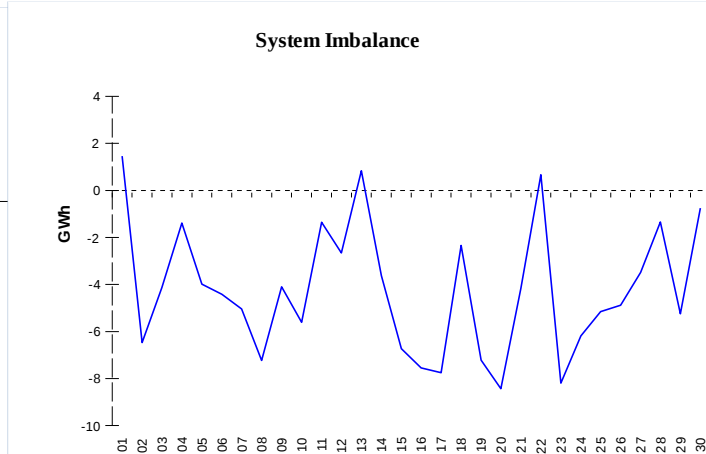
IMBALANCES

Electricity



	Volume (GWh)	Average Volume (MWh/hod)
Positive Imbalance	65,53	91,0
Negative Imbalance	-62,54	-86,9
Total Cost of Balancing Energy (CZK):		50 827 685,80

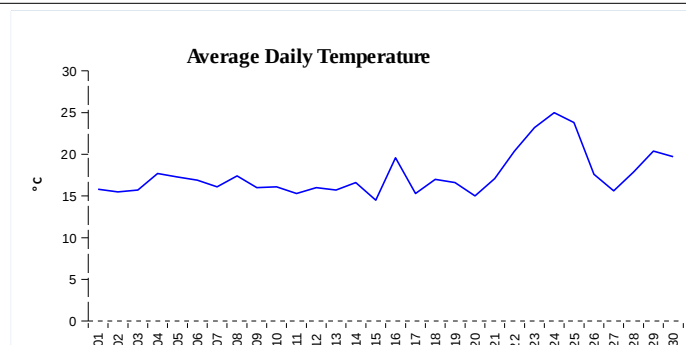
Gas



	Volume (GWh)
Positive Imbalance	79,38
Negative Imbalance	-205,86
Gas used for in-kind settlement	-126,73
Flexibility service balance	-3,32

REGISTRATION DATA

Registered Market Participants - electricity and gas	30 583
Balance responsible party - electricity	107
Balance responsible party - gas	96



Changes of Supplier	20 434
Total Amount of Registered delivery points	1 546 652

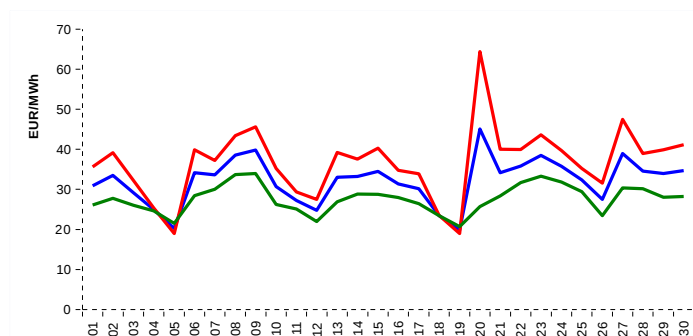
Changes of Supplier	13 216
Total Amount of Registered delivery points	1 082 364

SHORT-TERM MARKETS

Electricity	Volume (MWh)	Average Price
Block Market	4 632,0	891,98 CZK/MWh
Day-Ahead M. - Sell	1 374 836,8	
Day-Ahead M. - Purchase	1 359 932,5	32,14 EUR/MWh
Intraday Market	43 504,0	1 307,21 CZK/MWh

Gas	Volume (MWh)	Average Price (EUR/MWh)
Day-Ahead Market	0,0	0,00
Intraday Market	42 086,8	14,89

SPOT MARKET INDEX



— SPOT MARKET BASE LOAD INDEX
— SPOT MARKET PEAK LOAD INDEX
— SPOT MARKET OFFPEAK LOAD INDEX

Emission Allowance Trading

Transaction Type	Volume of Units	No. of Transactions
Allowances	2 224 721	61
Kyoto Units	41 220	3
Sum	2 265 941	64

Note:

The data is valid to the last day of the calendar month and may vary according to the version of the settlement of imbalances. The point of delivery and transfer registered in the OTE's system in case of the first change of supplier. Number of changes of supplier reflects the total number of delivery points, on which change of supplier occurred. More Information is available on <http://www.ote-cr.cz>