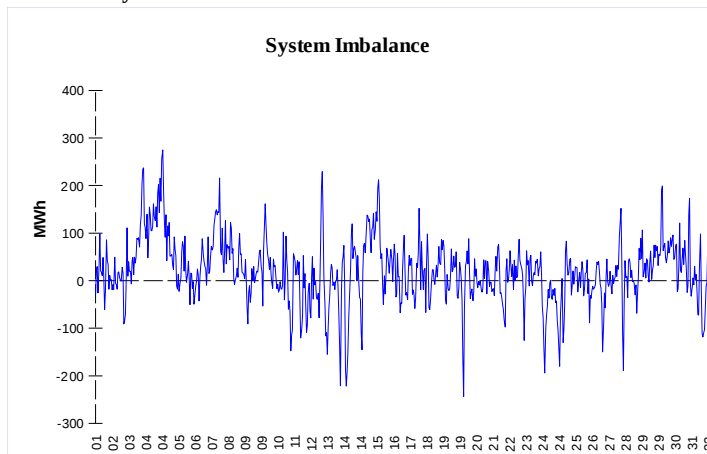


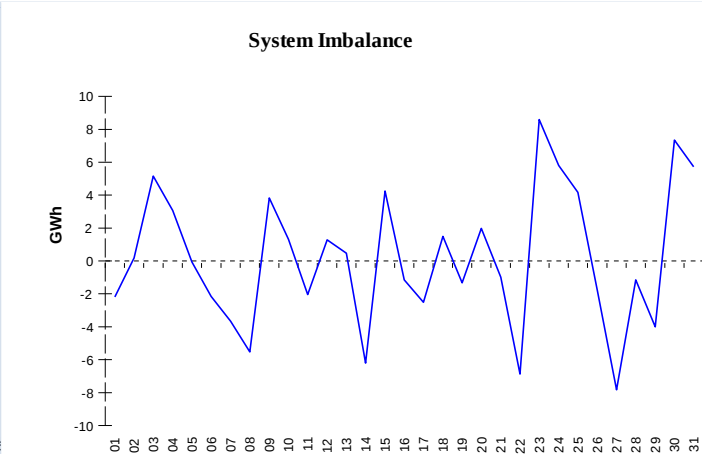
IMBALANCES

Electricity



	Volume (GWh)	Average Volume (MWh/hod)
Positive Imbalance	90,59	121,8
Negative Imbalance	-75,19	-101,1
Total Cost of Balancing Energy (CZK):		36 549 942,30

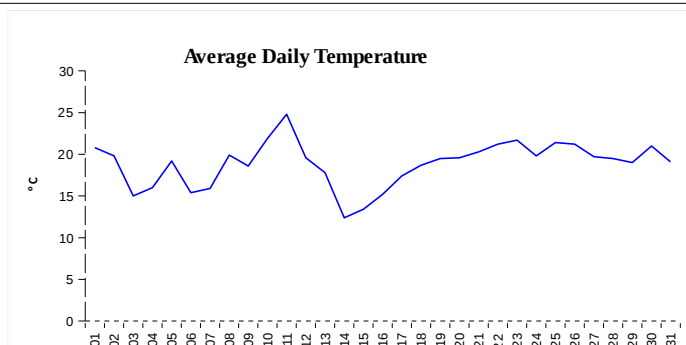
Gas



	Volume (GWh)
Positive Imbalance	131,91
Negative Imbalance	-126,71
Gas used for in-kind settlement	-6,23
Flexibility service balance	0,00

REGISTRATION DATA

Registered Market Participants - electricity and gas	30 601
Balance responsible party - electricity	108
Balance responsible party - gas	97



Changes of Supplier	24 046
Total Amount of Registered delivery points	1 569 329

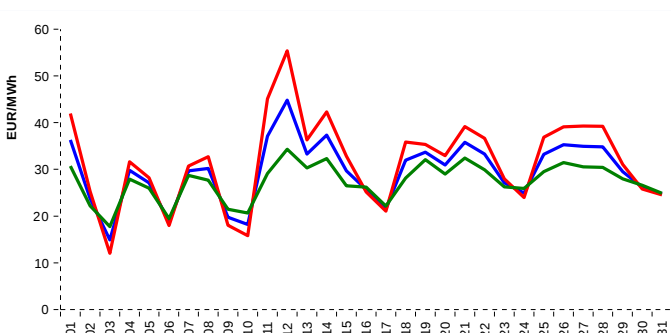
Changes of Supplier	16 582
Total Amount of Registered delivery points	1 087 187

SHORT-TERM MARKETS

Electricity	Volume (MWh)	Average Price
Block Market	2 544,0	898,67 CZK/MWh
Day-Ahead M. - Sell	1 389 846,4	
Day-Ahead M. - Purchase	1 425 620,4	29,49 EUR/MWh
Intraday Market	48 205,0	884,83 CZK/MWh

Gas	Volume (MWh)	Average Price (EUR/MWh)
Intraday Market	40 754,4	14,77

SPOT MARKET INDEX



— SPOT MARKET BASE LOAD INDEX
— SPOT MARKET PEAK LOAD INDEX
— SPOT MARKET OFFPEAK LOAD INDEX

Emission Allowance Trading

Transaction Type	Volume of Units	No. of Transactions
Allowances	4 581 129	57
Kyoto Units	0	0
Sum	4 581 129	57

Note:

The data is valid to the last day of the calendar month and may vary according to the version of the settlement of imbalances. The point of delivery and transfer registered in the OTE's system in case of the first change of supplier. Number of changes of supplier reflects the total number of delivery points, on which change of supplier occurred. More Information is available on <http://www.ote-cr.cz>