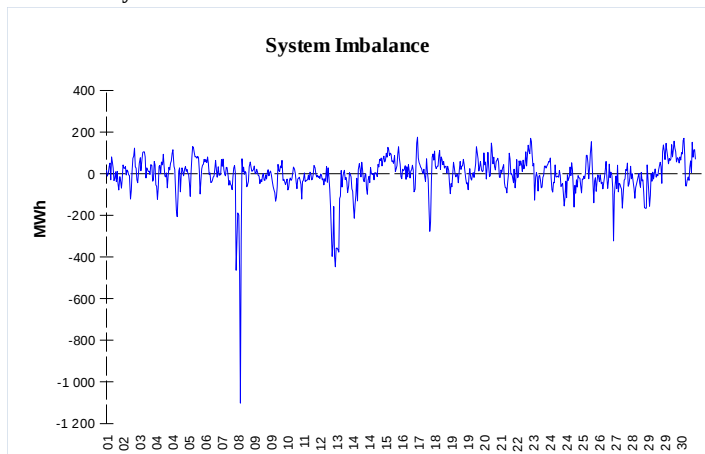
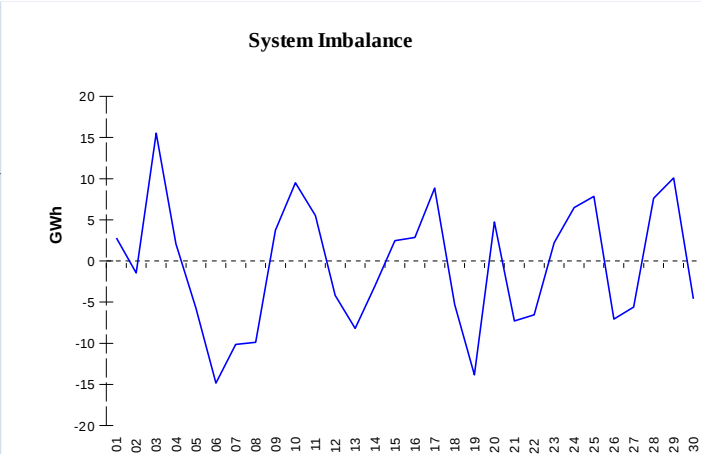


IMBALANCES
Electricity


	Volume (GWh)	Average Volume (MWh/hod)
Positive Imbalance	76,08	105,7
Negative Imbalance	-80,30	-111,5
Total Cost of Balancing Energy (CZK):		85 015 218,50

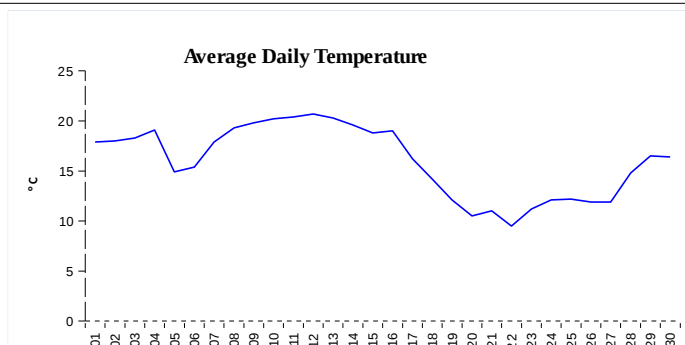
Gas


	Volume (GWh)
Positive Imbalance	169,90
Negative Imbalance	-185,25
Gas used for in-kind settlement	0,00
Flexibility service balance	0,00

REGISTRATION DATA

Registered Market Participants - electricity and gas	30 657
Balance responsible party - electricity	108
Balance responsible party - gas	96

Changes of Supplier	27 852
Total Amount of Registered delivery points	1 595 242

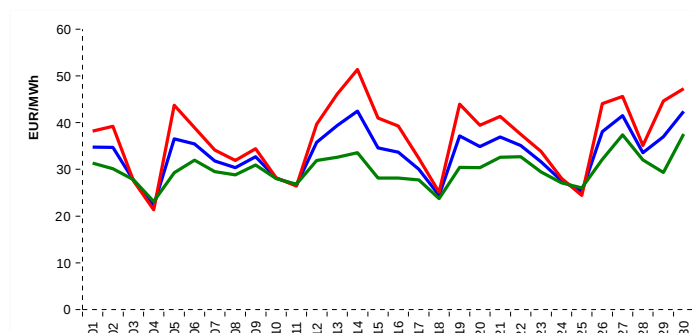


Changes of Supplier	18 043
Total Amount of Registered delivery points	1 097 815

SHORT-TERM MARKETS

Electricity	Volume (MWh)	Average Price
Block Market	4 944,0	918,68 CZK/MWh
Day-Ahead M. - Sell	1 281 379,8	
Day-Ahead M. - Purchase	1 303 800,6	33,41 EUR/MWh
Intraday Market	30 951,3	39,47 CZK/MWh

Gas	Volume (MWh)	Average Price (EUR/MWh)
Intraday Market	119 867,1	12,80

SPOT MARKET INDEX


— SPOT MARKET BASE LOAD INDEX
— SPOT MARKET PEAK LOAD INDEX
— SPOT MARKET OFFPEAK LOAD INDEX

Emission Allowance Trading

Transaction Type	Volume of Units	No. of Transactions
Allowances	3 240 017	40
Kyoto Units	20 622	1
Sum	3 260 639	41

Note:

The data is valid to the last day of the calendar month and may vary according to the version of the settlement of imbalances.
 The point of delivery and transfer registered in the OTE's system in case of the first change of supplier. Number of changes of supplier reflects the total number of delivery points, on which change of supplier occurred.
 More Information is available on <http://www.ote-cr.cz>