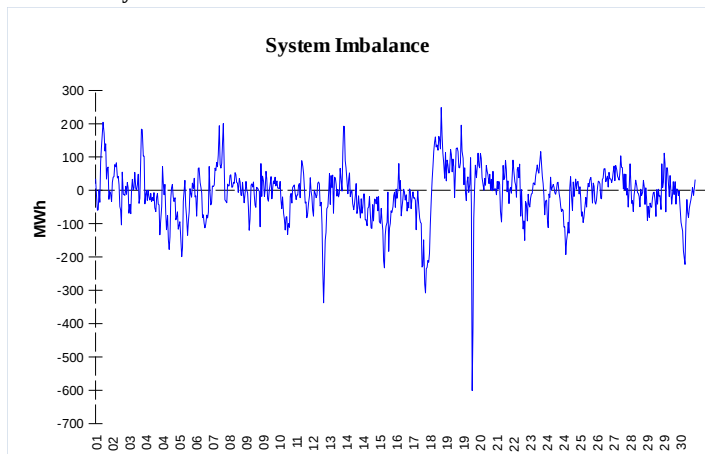
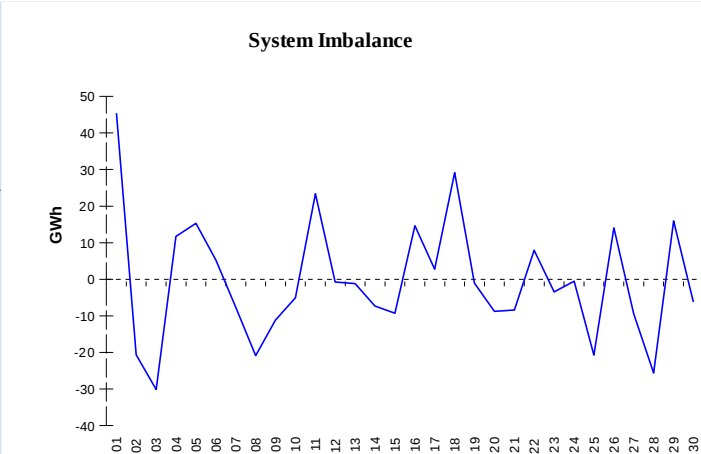


**IMBALANCES**
**Electricity**


	Volume (GWh)	Average Volume (MWh/hod)
Positive Imbalance	81,79	113,6
Negative Imbalance	-88,12	-122,4
Total Cost of Balancing Energy (CZK):		73 016 601,50

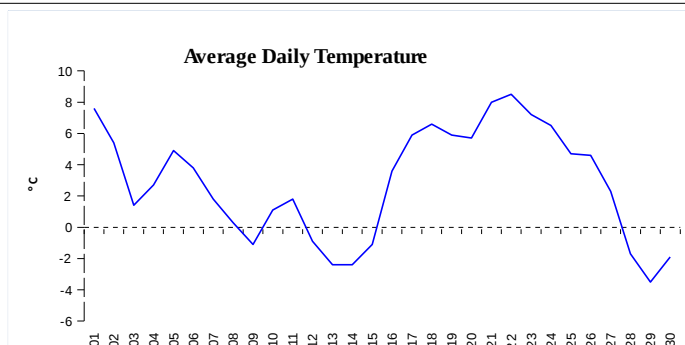
**Gas**


	Volume (GWh)
Positive Imbalance	297,68
Negative Imbalance	-310,24
Gas used for in-kind settlement	0,00
Flexibility service balance	0,00

**REGISTRATION DATA**

Registered Market Participants - electricity and gas	30 760
Balance responsible party - electricity	109
Balance responsible party - gas	96

Changes of Supplier	23 650
Total Amount of Registered delivery points	1 613 593

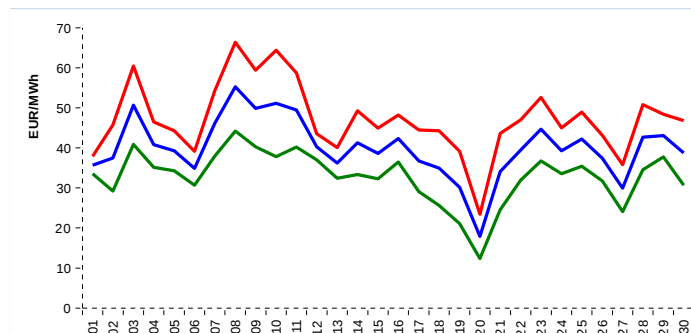


Changes of Supplier	15 907
Total Amount of Registered delivery points	1 104 937

**SHORT-TERM MARKETS**

Electricity	Volume (MWh)	Average Price
Block Market	840,0	1 116,20 CZK/MWh
Day-Ahead M. - Sell	1 508 129,7	
Day-Ahead M. - Purchase	1 425 271,1	40,02 EUR/MWh
IM	38 894,4	43,42 EUR/MWh
IM - block contracts	44 989,9	454,85 EUR/MWh

Gas	Volume (MWh)	Average Price (EUR/MWh)
IM	262 561,1	17,99

**SPOT MARKET INDEX**


— SPOT MARKET BASE LOAD INDEX  
— SPOT MARKET PEAK LOAD INDEX  
— SPOT MARKET OFFPEAK LOAD INDEX

**Emission Allowance Trading**

Transaction Type	Volume of Units	No. of Transactions
Allowances	1 476 067	36
Kyoto Units	55 503	9
<b>Sum</b>	<b>1 531 570</b>	<b>45</b>

**Note:**

The data is valid to the last day of the calendar month and may vary according to the version of the settlement of imbalances. The point of delivery and transfer registered in the OTE's system in case of the first change of supplier. Number of changes of supplier reflects the total number of delivery points, on which change of supplier occurred. More Information is available on <http://www.ote-cr.cz>