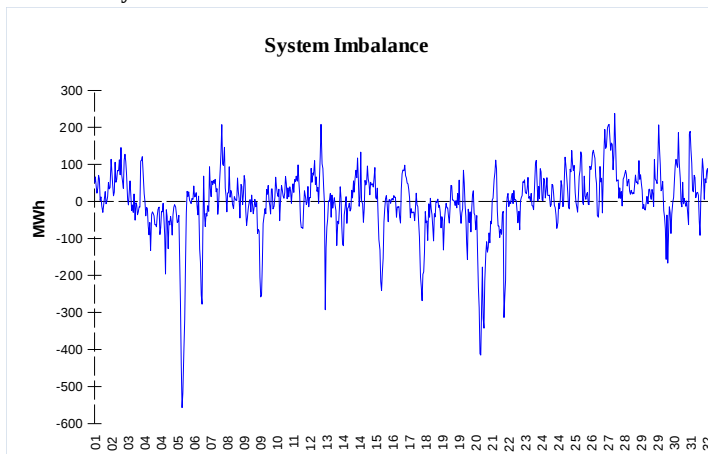


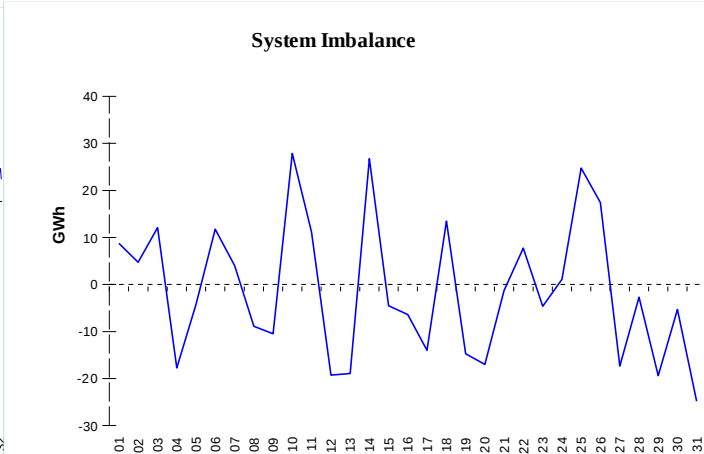
IMBALANCES

Electricity



	Volume (GWh)	Average Volume (MWh/hod)
Positive Imbalance	101,18	136,0
Negative Imbalance	-101,10	-135,9
Total Cost of Balancing Energy (CZK):		82 290 714,90

Gas

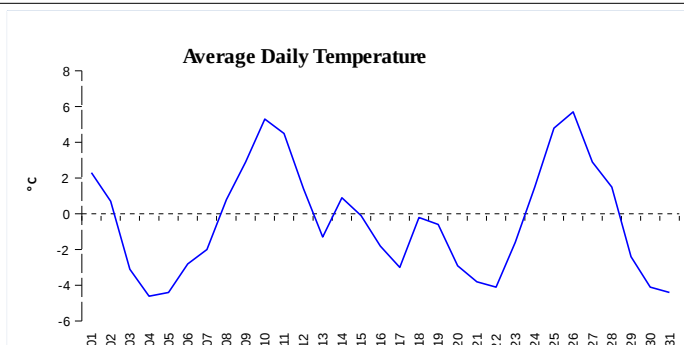


	Volume (GWh)
Positive Imbalance	329,92
Negative Imbalance	-369,98
Gas used for in-kind settlement	0,00
Flexibility service balance	0,00

REGISTRATION DATA

Registered Market Participants - electricity and gas	30 862
Balance responsible party - electricity	109
Balance responsible party - gas	95

Changes of Supplier	20 673
Total Amount of Registered delivery points	1 622 915



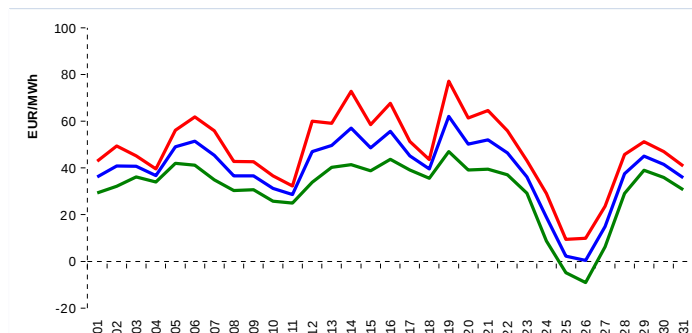
Changes of Supplier	15 937
Total Amount of Registered delivery points	1 108 309

SHORT-TERM MARKETS

Electricity	Volume (MWh)	Average Price
Block Market	2 436,0	1 133,15 CZK/MWh
Day-Ahead M. - Sell	1 644 968,7	39,32 EUR/MWh
Day-Ahead M. - Purchase	1 668 455,6	
IM	60 536,7	45,03 EUR/MWh
IM - block contracts	8 063,0	44,81 EUR/MWh

Gas	Volume (MWh)	Average Price (EUR/MWh)
IM	434 075,6	17,70

SPOT MARKET INDEX



— SPOT MARKET BASE LOAD INDEX
— SPOT MARKET PEAK LOAD INDEX
— SPOT MARKET OFFPEAK LOAD INDEX

Emission Allowance Trading

Transaction Type	Volume of Units	No. of Transactions
Allowances	43 262 808	81
Kyoto Units	98 664	6
Sum	43 361 472	87

Note:

The data is valid to the last day of the calendar month and may vary according to the version of the settlement of imbalances. The point of delivery and transfer registered in the OTE's system in case of the first change of supplier. Number of changes of supplier reflects the total number of delivery points, on which change of supplier occurred. More Information is available on <http://www.ote-cr.cz>