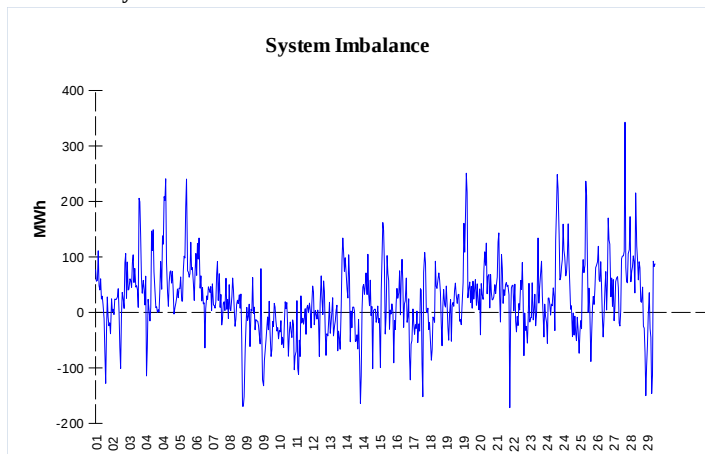
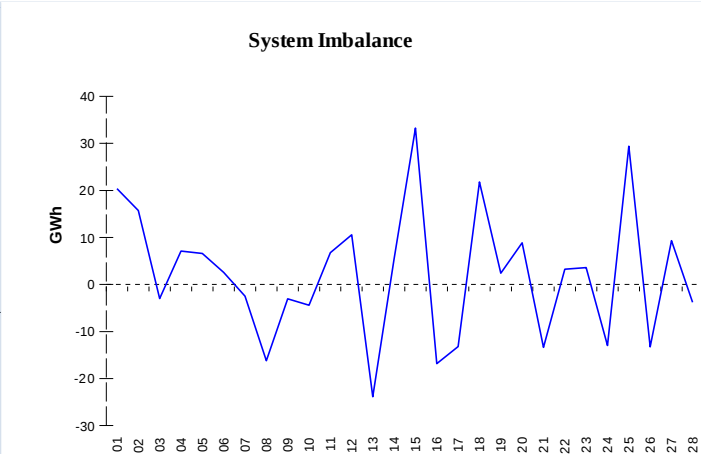


IMBALANCES
Electricity


	Volume (GWh)	Average Volume (MWh/hod)
Positive Imbalance	95,87	142,7
Negative Imbalance	-79,97	-119,0
Total Cost of Balancing Energy (CZK):		34 296 450,10

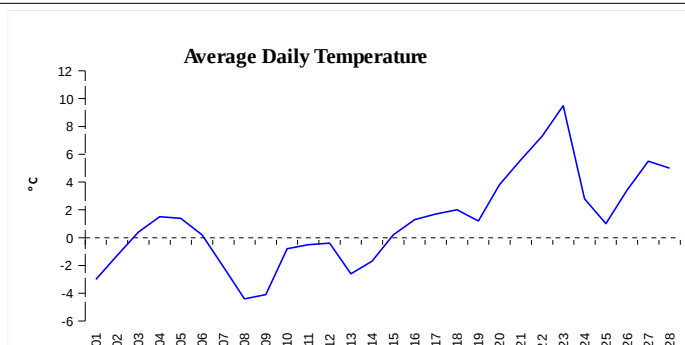
Gas


	Volume (GWh)
Positive Imbalance	321,85
Negative Imbalance	-261,32
Gas used for in-kind settlement	0,00
Flexibility service balance	0,00

REGISTRATION DATA

Registered Market Participants - electricity and gas	30 984
Balance responsible party - electricity	107
Balance responsible party - gas	92

Changes of Supplier	0
Total Amount of Registered delivery points	1 676 970

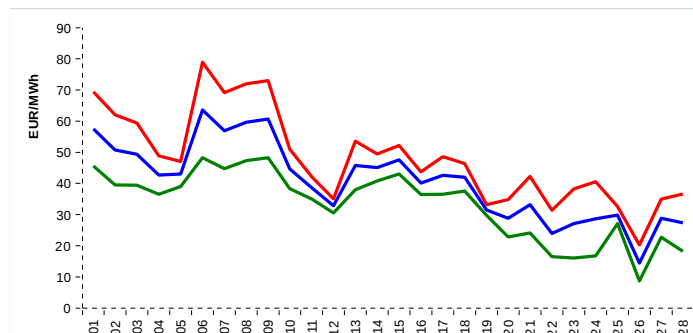


Changes of Supplier	13 750
Total Amount of Registered delivery points	1 113 990

SHORT-TERM MARKETS

Electricity	Volume (MWh)	Average Price
Block Market	2 376,0	1 288,74 CZK/MWh
Day-Ahead M. - Sell	1 751 717,2	
Day-Ahead M. - Purchase	1 631 472,5	40,62 EUR/MWh
IM	39 496,1	34,58 EUR/MWh
IM - block contracts	3 024,0	43,06 EUR/MWh

Gas	Volume (MWh)	Average Price (EUR/MWh)
IM	355 623,0	19,76

SPOT MARKET INDEX


— SPOT MARKET BASE LOAD INDEX
— SPOT MARKET PEAK LOAD INDEX
— SPOT MARKET OFFPEAK LOAD INDEX

Emission Allowance Trading

Transaction Type	Volume of Units	No. of Transactions
Allowances	3 639 742	17
Kyoto Units	64 795	6
Sum	3 704 537	23

Note:

The data is valid to the last day of the calendar month and may vary according to the version of the settlement of imbalances. The point of delivery and transfer registered in the OTE's system in case of the first change of supplier. Number of changes of supplier reflects the total number of delivery points, on which change of supplier occurred. More Information is available on <http://www.ote-cr.cz>