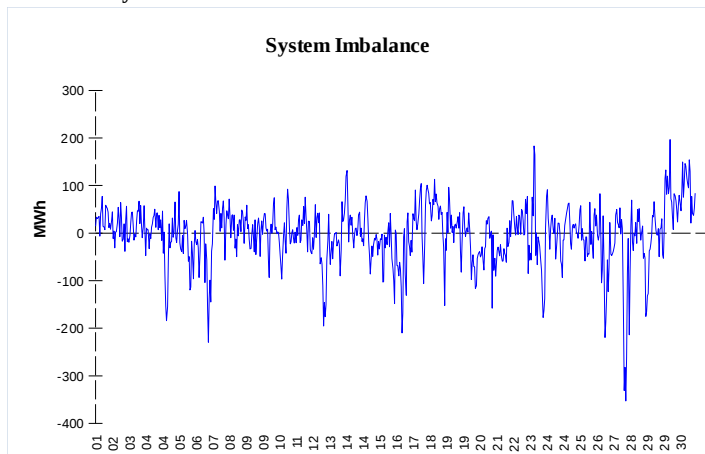
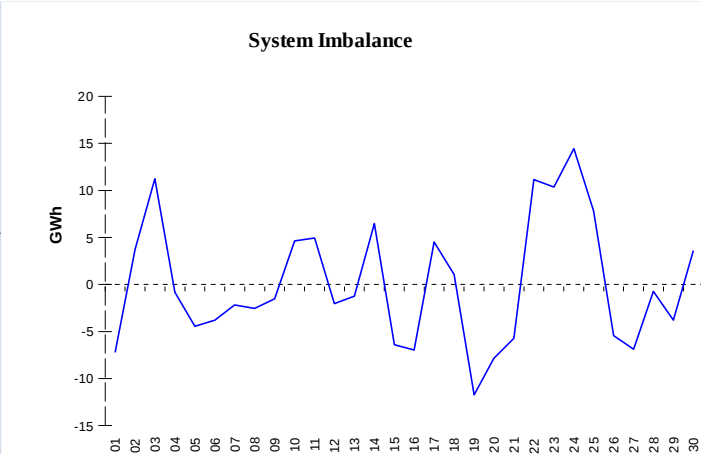


**IMBALANCES**
**Electricity**


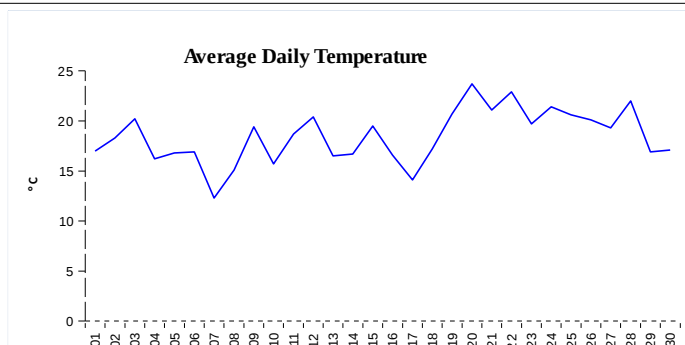
	Volume (GWh)	Average Volume (MWh/hod)
Positive Imbalance	72,66	100,9
Negative Imbalance	-74,65	-103,7
Total Cost of Balancing Energy (CZK):		49 882 222,80

**Gas**


	Volume (GWh)
Positive Imbalance	179,78
Negative Imbalance	-177,04
Gas used for in-kind settlement	0,00
Flexibility service balance	0,00

**REGISTRATION DATA**

Registered Market Participants - electricity and gas	31 123
Balance responsible party - electricity	111
Balance responsible party - gas	95



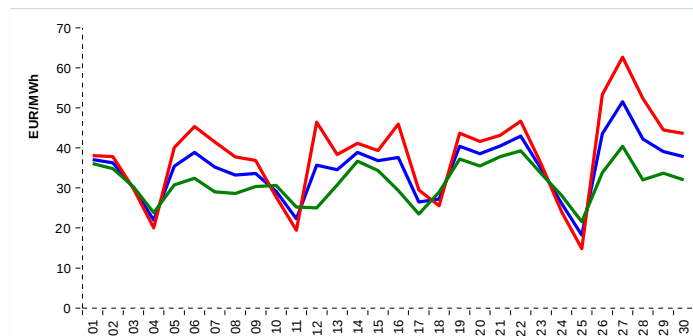
Changes of Supplier	22 183
Total Amount of Registered delivery points	1 729 604

Changes of Supplier	15 260
Total Amount of Registered delivery points	1 130 601

**SHORT-TERM MARKETS**

Electricity	Volume (MWh)	Average Price
Block Market	840,0	1 054,50 CZK/MWh
Day-Ahead M. - Sell	1 491 334,8	34,88 EUR/MWh
Day-Ahead M. - Purchase	1 492 575,5	34,88 EUR/MWh
IM	36 685,9	42,37 EUR/MWh
IM - block contracts	298,0	25,50 EUR/MWh

Gas	Volume (MWh)	Average Price (EUR/MWh)
IM	133 884,3	15,51

**SPOT MARKET INDEX**


— SPOT MARKET BASE LOAD INDEX  
— SPOT MARKET PEAK LOAD INDEX  
— SPOT MARKET OFFPEAK LOAD INDEX

**Emission Allowance Trading**

Transaction Type	Volume of Units	No. of Transactions
Allowances	7 518 120	19
Kyoto Units	0	0
<b>Sum</b>	<b>7 518 120</b>	<b>19</b>

**Note:**

The data is valid to the last day of the calendar month and may vary according to the version of the settlement of imbalances. The point of delivery and transfer registered in the OTE's system in case of the first change of supplier. Number of changes of supplier reflects the total number of delivery points, on which change of supplier occurred. More Information is available on <http://www.ote-cr.cz>