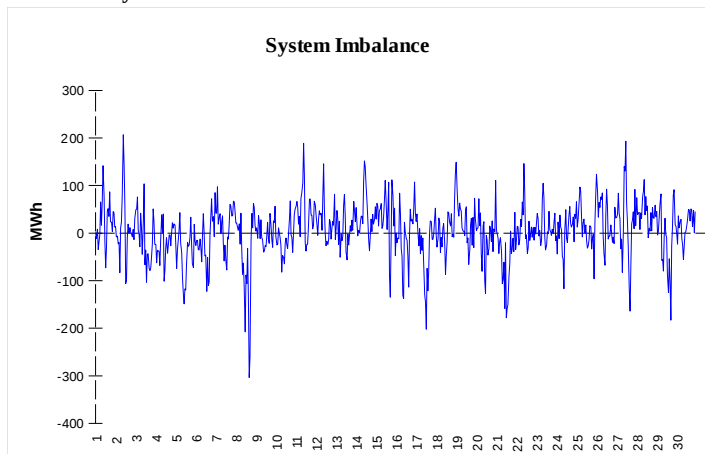
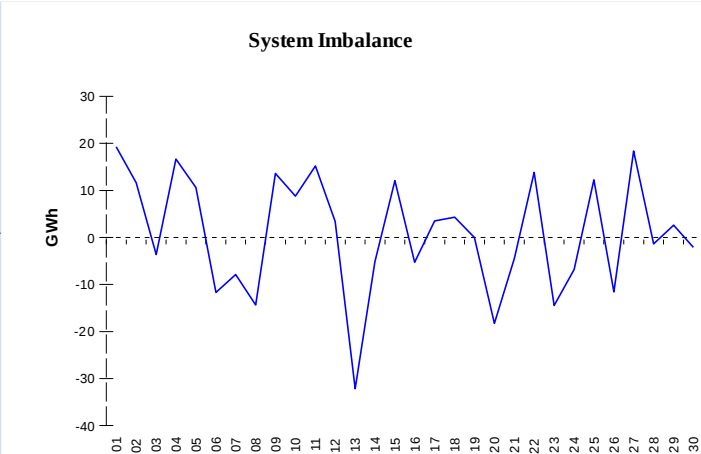


IMBALANCES
Electricity


	Volume (GWh)	Average Volume (MWh/hod)
Positive Imbalance	83,53	116,0
Negative Imbalance	-80,62	-112,0
Total Cost of Balancing Energy (CZK):		44 194 132,60

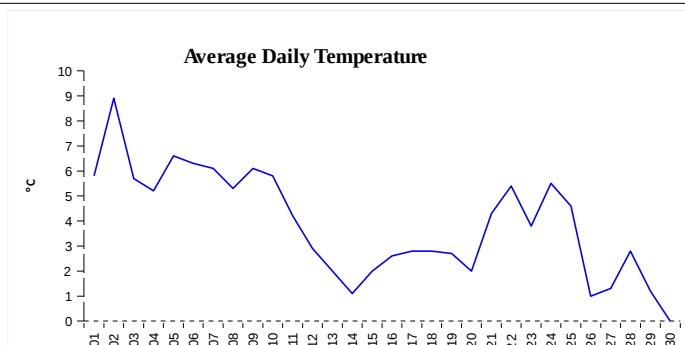
Gas


	Volume (GWh)
Positive Imbalance	320,10
Negative Imbalance	-292,99
Gas used for in-kind settlement	0,00
Flexibility service balance	0,00

REGISTRATION DATA

Registered Market Participants - electricity and gas	31 254
Balance responsible party - electricity	108
Balance responsible party - gas	97

Changes of Supplier	21 170
Total Amount of Registered delivery points	2 825 658

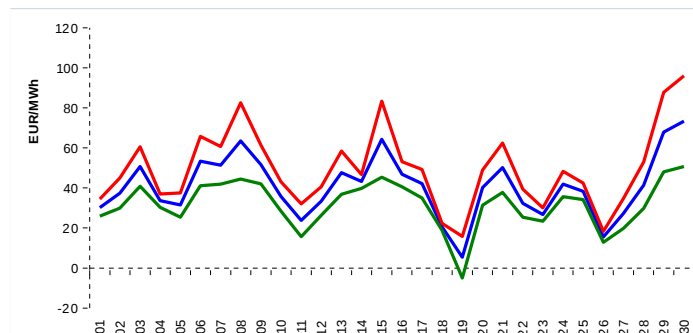


Changes of Supplier	24 614
Total Amount of Registered delivery points	0

SHORT-TERM MARKETS

Electricity	Volume (MWh)	Average Price
Block Market	1 872,0	1 172,33 CZK/MWh
Day-Ahead M. - Sell	2 025 985,4	
Day-Ahead M. - Purchase	1 301 733,5	40,71 EUR/MWh
IM	36 762,9	48,05 EUR/MWh
IM - block contracts	1 742,0	68,25 EUR/MWh

Gas	Volume (MWh)	Average Price (EUR/MWh)
IM	252 780,1	19,56

SPOT MARKET INDEX


— SPOT MARKET BASE LOAD INDEX
— SPOT MARKET PEAK LOAD INDEX
— SPOT MARKET OFFPEAK LOAD INDEX

Emission Allowance Trading

Transaction Type	Volume of Units	No. of Transactions
Allowances	25 473 640	44
Kyoto Units	20 000	1
Sum	25 493 640	45

Note:

The data is valid to the last day of the calendar month and may vary according to the version of the settlement of imbalances. The point of delivery and transfer registered in the OTE's system in case of the first change of supplier. Number of changes of supplier reflects the total number of delivery points, on which change of supplier occurred. More Information is available on <http://www.ote-cr.cz>