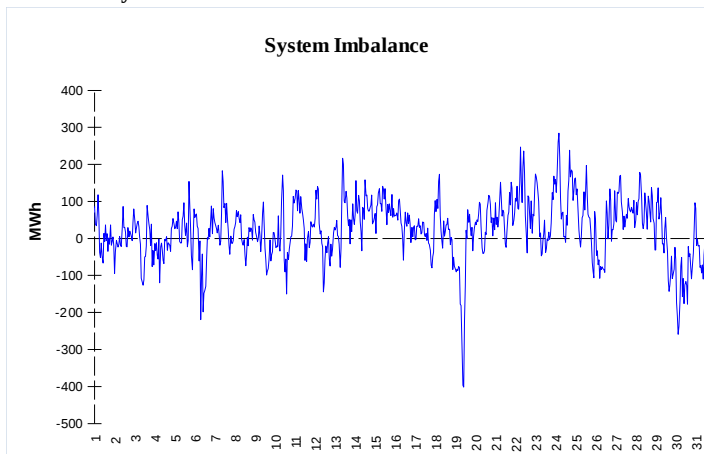


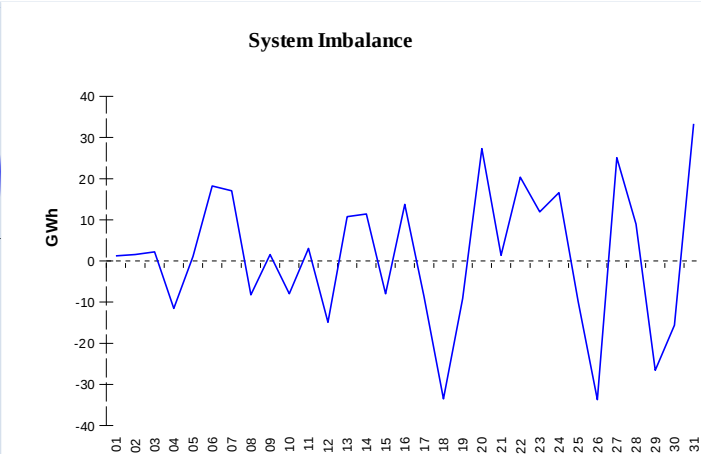
IMBALANCES

Electricity



	Volume (GWh)	Average Volume (MWh/hod)
Positive Imbalance	114,37	153,7
Negative Imbalance	-94,25	-126,7
Total Cost of Balancing Energy (CZK):		44 937 656,90

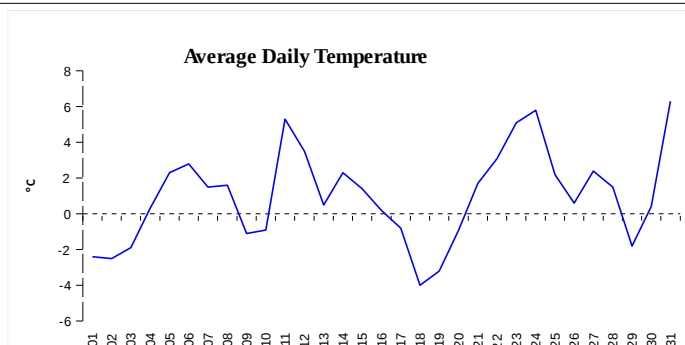
Gas



	Volume (GWh)
Positive Imbalance	357,00
Negative Imbalance	-317,71
Daily positive balancing volume	35,37
Daily negative balancing volume	-8,98

REGISTRATION DATA

Registered Market Participants - electricity and gas	31 285
Balance responsible party - electricity	110
Balance responsible party - gas	97



Changes of Supplier	22 212
Total Amount of Registered delivery points	2 833 417

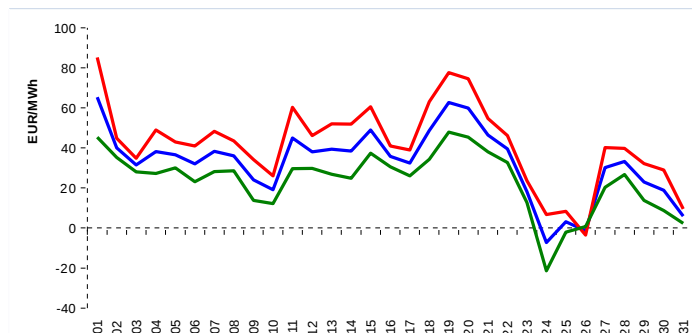
Changes of Supplier	19 405
Total Amount of Registered delivery points	0

SHORT-TERM MARKETS

Electricity	Volume (MWh)	Average Price
Block Market	876,0	1 065,89 CZK/MWh
Day-Ahead M. - Sell	1 869 120,9	32,89 EUR/MWh
Day-Ahead M. - Purchase	1 426 756,5	32,89 EUR/MWh
IM	47 112,4	33,23 EUR/MWh
IM - block contracts	2 599,0	32,15 EUR/MWh

Gas	Volume (MWh)	Average Price (EUR/MWh)
IM	261 539,5	19,91

SPOT MARKET INDEX



— SPOT MARKET BASE LOAD INDEX
— SPOT MARKET PEAK LOAD INDEX
— SPOT MARKET OFFPEAK LOAD INDEX

Emission Allowance Trading

Transaction Type	Volume of Units	No. of Transactions
Allowances	0	0
Kyoto Units	0	0
Sum	0	0

Note:

The data is valid to the last day of the calendar month and may vary according to the version of the settlement of imbalances. The point of delivery and transfer registered in the OTE's system in case of the first change of supplier. Number of changes of supplier reflects the total number of delivery points, on which change of supplier occurred. More Information is available on <http://www.ote-cr.cz>