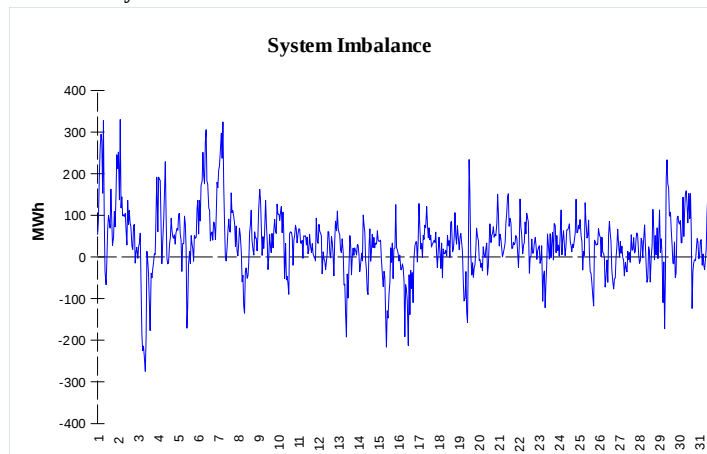
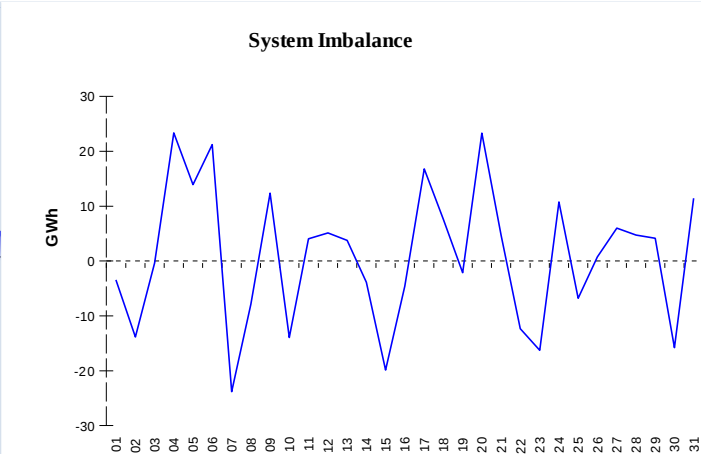


IMBALANCES
Electricity


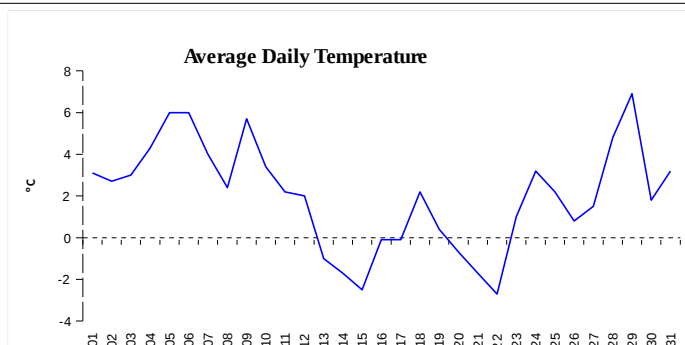
	Volume (GWh)	Average Volume (MWh/hod)
Positive Imbalance	115,13	154,7
Negative Imbalance	-89,55	-120,4
Total Cost of Balancing Energy (CZK):		35 514 865,20

Gas


	Volume (GWh)
Positive Imbalance	351,41
Negative Imbalance	-322,41
Daily positive balancing volume	44,90
Daily negative balancing volume	-10,41

REGISTRATION DATA

Registered Market Participants - electricity and gas	31 327
Balance responsible party - electricity	111
Balance responsible party - gas	96



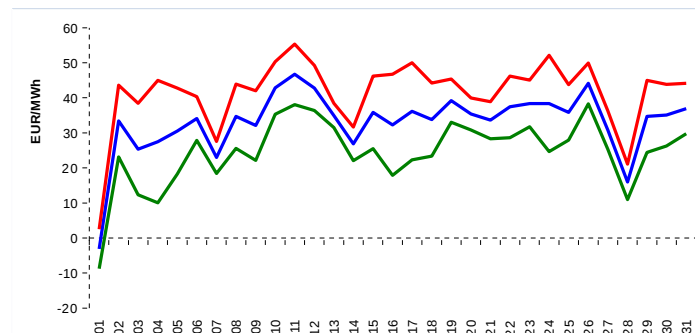
Changes of Supplier	89 526
Total Amount of Registered delivery points	0

Changes of Supplier	34 731
Total Amount of Registered delivery points	0

SHORT-TERM MARKETS

Electricity	Volume (MWh)	Average Price
Block Market	1 356,0	966,18 CZK/MWh
Day-Ahead M. - Sell	1 729 915,8	33,08 EUR/MWh
Day-Ahead M. - Purchase	1 502 088,7	33,08 EUR/MWh
IM	56 100,2	35,17 EUR/MWh
IM - block contracts	2 044,0	38,88 EUR/MWh

Gas	Volume (MWh)	Average Price (EUR/MWh)
IM	214 472,9	18,39

SPOT MARKET INDEX


— SPOT MARKET BASE LOAD INDEX
— SPOT MARKET PEAK LOAD INDEX
— SPOT MARKET OFFPEAK LOAD INDEX

Emission Allowance Trading

Transaction Type	Volume of Units	No. of Transactions
Allowances	46 669 548	46
Kyoto Units	150 000	4
Sum	46 819 548	50

Note:

The data is valid to the last day of the calendar month and may vary according to the version of the settlement of imbalances. The point of delivery and transfer registered in the OTE's system in case of the first change of supplier. Number of changes of supplier reflects the total number of delivery points, on which change of supplier occurred. More Information is available on <http://www.ote-cr.cz>