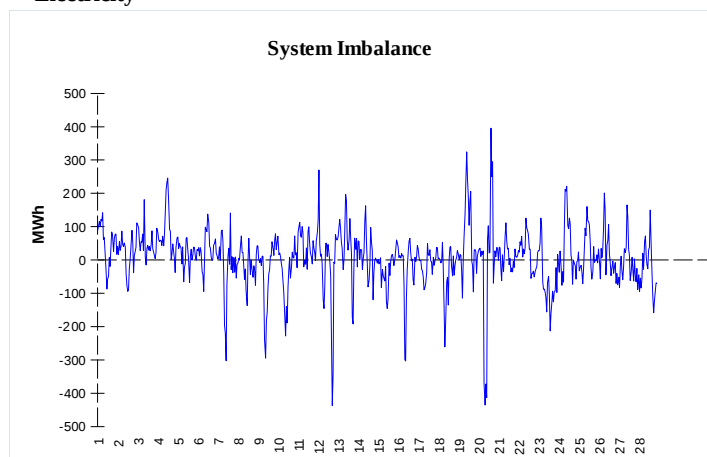
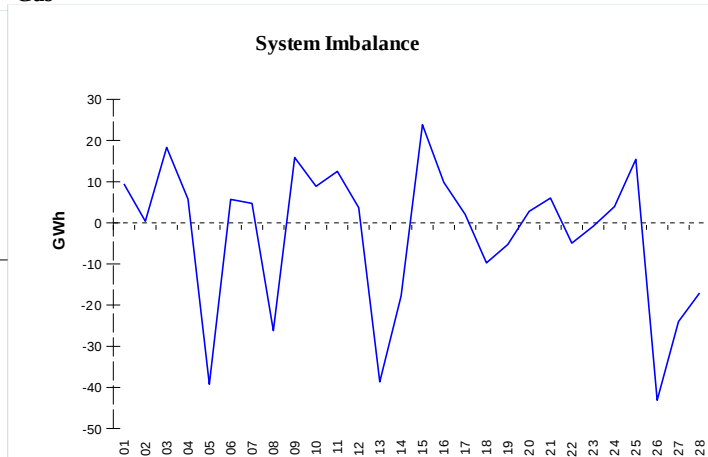


**IMBALANCES**
**Electricity**


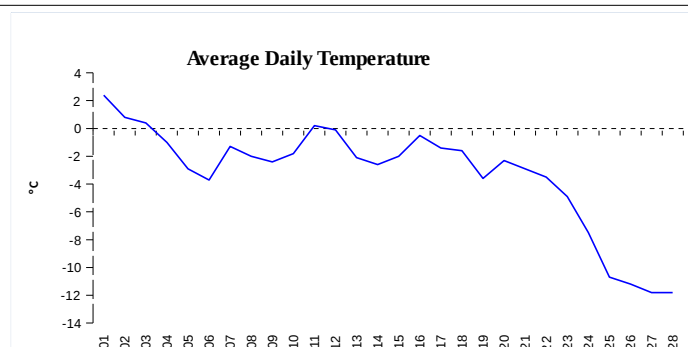
	Volume (GWh)	Average Volume (MWh/hod)
Positive Imbalance	85,45	127,2
Negative Imbalance	-80,99	-120,5
Total Cost of Balancing Energy (CZK):		58 091 145,10

**Gas**


	Volume (GWh)
Positive Imbalance	305,41
Negative Imbalance	-383,00
Daily positive balancing volume	45,28
Daily negative balancing volume	-68,55

**REGISTRATION DATA**

Registered Market Participants - electricity and gas	31 357
Balance responsible party - electricity	111
Balance responsible party - gas	96



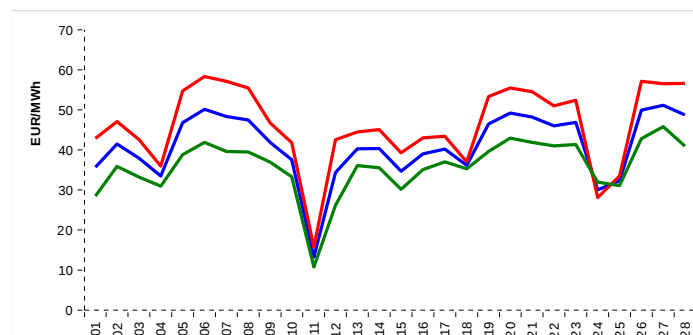
Changes of Supplier	25 993
Total Amount of Registered delivery points	2 863 165

Changes of Supplier	16 457
Total Amount of Registered delivery points	1 268 568

**SHORT-TERM MARKETS**

Electricity	Volume (MWh)	Average Price
Block Market	960,0	1 273,09 CZK/MWh
Day-Ahead M. - Sell	1 422 370,6	40,99 EUR/MWh
Day-Ahead M. - Purchase	1 513 617,0	
IM	55 327,5	46,63 EUR/MWh
IM - block contracts	5 025,0	52,93 EUR/MWh

Gas	Volume (MWh)	Average Price (EUR/MWh)
IM	274 752,9	22,87

**SPOT MARKET INDEX**


— SPOT MARKET BASE LOAD INDEX  
— SPOT MARKET PEAK LOAD INDEX  
— SPOT MARKET OFFPEAK LOAD INDEX

**Emission Allowance Trading**

Transaction Type	Volume of Units	No. of Transactions
Allowances	33 040 151	58
Kyoto Units	40 027	2
<b>Sum</b>	<b>33 080 178</b>	<b>60</b>

**Note:**

The data is valid to the last day of the calendar month and may vary according to the version of the settlement of imbalances. The point of delivery and transfer registered in the OTE's system in case of the first change of supplier. Number of changes of supplier reflects the total number of delivery points, on which change of supplier occurred. More Information is available on <http://www.ote-cr.cz>