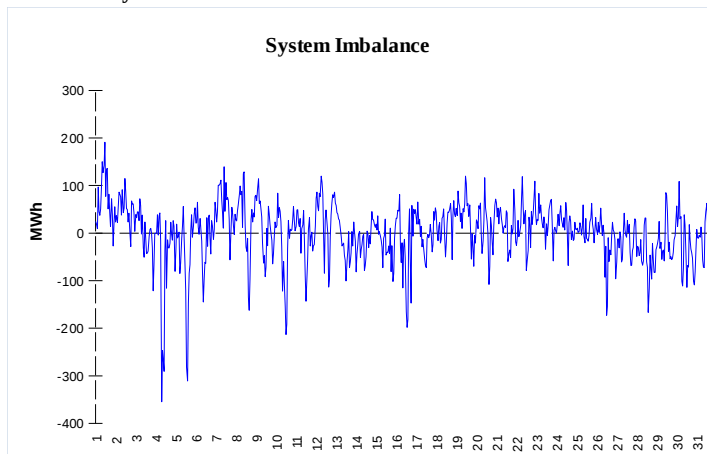
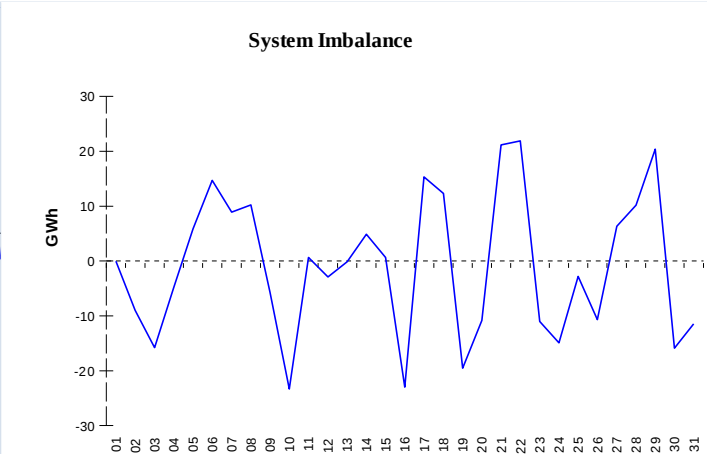


IMBALANCES
Electricity


	Volume (GWh)	Average Volume (MWh/hod)
Positive Imbalance	79,73	107,2
Negative Imbalance	-78,82	-105,9
Total Cost of Balancing Energy (CZK):		48 360 892,90

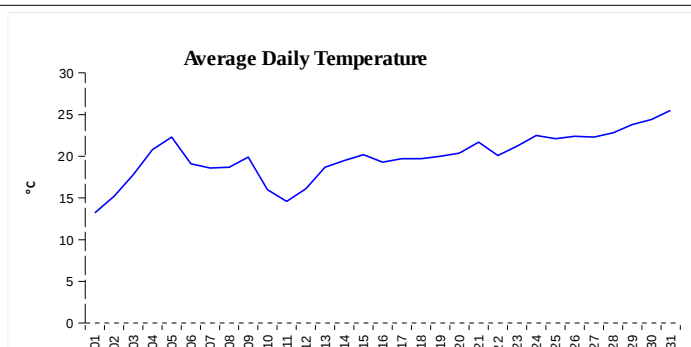
Gas


	Volume (GWh)
Positive Imbalance	282,39
Negative Imbalance	-310,96
Daily positive balancing volume	4,86
Daily negative balancing volume	-26,13

REGISTRATION DATA

Registered Market Participants - electricity and gas	31 485
Balance responsible party - electricity	115
Balance responsible party - gas	96

Changes of Supplier	26 026
Total Amount of Registered delivery points	2 949 333

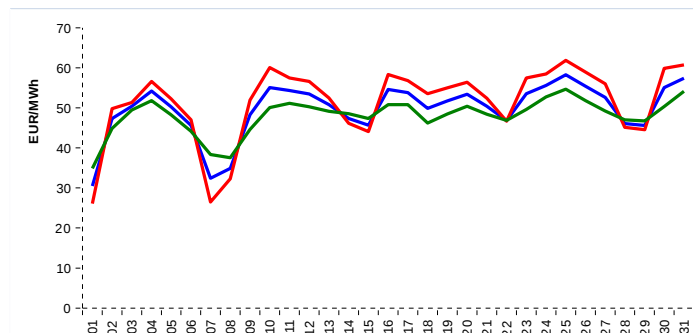


Changes of Supplier	16 323
Total Amount of Registered delivery points	1 301 233

SHORT-TERM MARKETS

Electricity	Volume (MWh)	Average Price
Block Market	204,0	1 222,24 CZK/MWh
Day-Ahead M. - Sell	1 572 102,6	
Day-Ahead M. - Purchase	1 616 327,6	49,69 EUR/MWh
IM	34 034,5	48,66 EUR/MWh
IM - block contracts	322,0	51,24 EUR/MWh

Gas	Volume (MWh)	Average Price (EUR/MWh)
IM	169 108,5	22,93

SPOT MARKET INDEX


— SPOT MARKET BASE LOAD INDEX
— SPOT MARKET PEAK LOAD INDEX
— SPOT MARKET OFFPEAK LOAD INDEX

Emission Allowance Trading

Transaction Type	Volume of Units	No. of Transactions
Allowances	18 692 921	52
Kyoto Units	19 649	1
Sum	18 712 570	53

Note:

The data is valid to the last day of the calendar month and may vary according to the version of the settlement of imbalances. The point of delivery and transfer registered in the OTE's system in case of the first change of supplier. Number of changes of supplier reflects the total number of delivery points, on which change of supplier occurred. More Information is available on <http://www.ote-cr.cz>