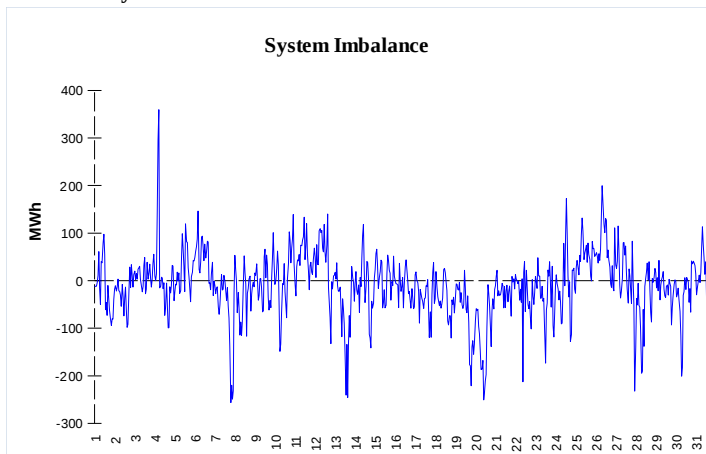
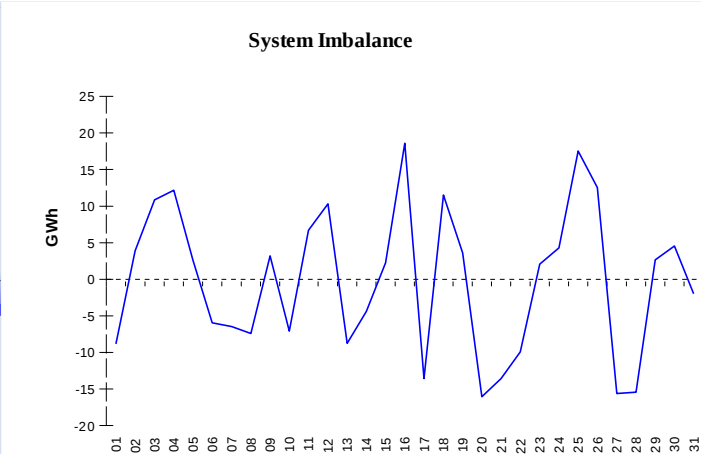


IMBALANCES
Electricity


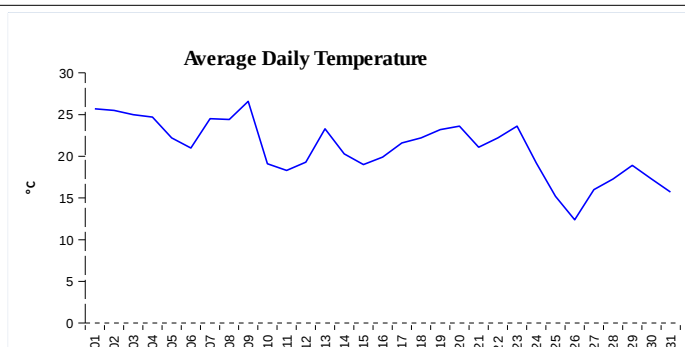
	Volume (GWh)	Average Volume (MWh/hod)
Positive Imbalance	77,57	104,3
Negative Imbalance	-85,41	-114,8
Total Cost of Balancing Energy (CZK):		65 564 246,80

Gas


	Volume (GWh)
Positive Imbalance	265,03
Negative Imbalance	-270,87
Daily positive balancing volume	12,49
Daily negative balancing volume	-11,85

REGISTRATION DATA

Registered Market Participants - electricity and gas	31 505
Balance responsible party - electricity	115
Balance responsible party - gas	96



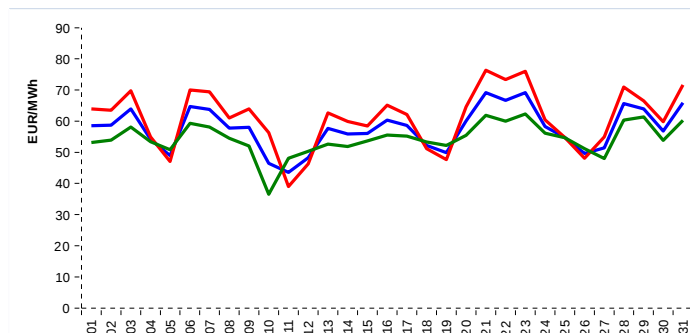
Changes of Supplier	22 075
Total Amount of Registered delivery points	2 957 642

Changes of Supplier	14 194
Total Amount of Registered delivery points	1 305 811

SHORT-TERM MARKETS

Electricity	Volume (MWh)	Average Price
Block Market	240,0	1 243,00 CZK/MWh
Day-Ahead M. - Sell	1 598 330,7	
Day-Ahead M. - Purchase	1 328 920,2	57,72 EUR/MWh
IM	35 653,4	53,91 EUR/MWh
IM - block contracts	240,0	64,00 EUR/MWh

Gas	Volume (MWh)	Average Price (EUR/MWh)
IM	156 290,7	23,64

SPOT MARKET INDEX


— SPOT MARKET BASE LOAD INDEX
— SPOT MARKET PEAK LOAD INDEX
— SPOT MARKET OFFPEAK LOAD INDEX

Emission Allowance Trading

Transaction Type	Volume of Units	No. of Transactions
Allowances	12 486 494	63
Kyoto Units	323 136	6
Sum	12 809 630	69

Note:

The data is valid to the last day of the calendar month and may vary according to the version of the settlement of imbalances. The point of delivery and transfer registered in the OTE's system in case of the first change of supplier. Number of changes of supplier reflects the total number of delivery points, on which change of supplier occurred. More Information is available on <http://www.ote-cr.cz>