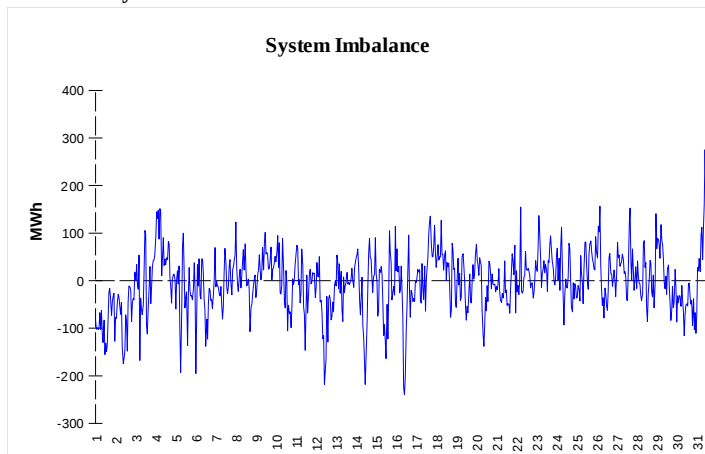
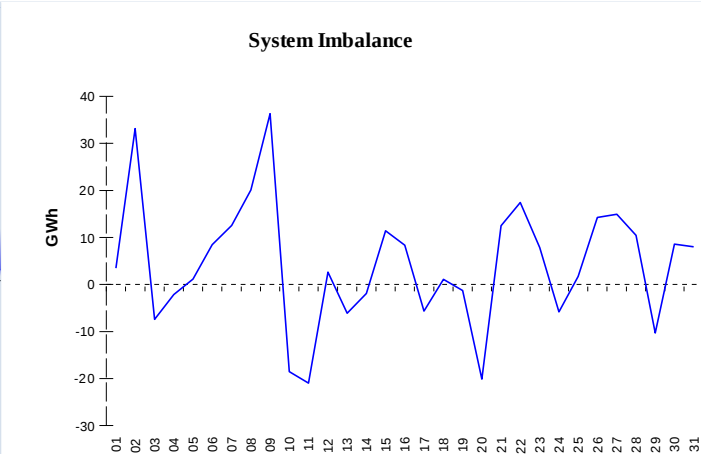


**IMBALANCES**
**Electricity**


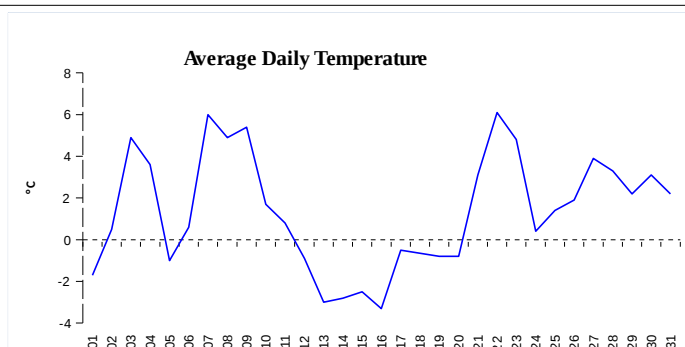
	Volume (GWh)	Average Volume (MWh/hod)
Positive Imbalance	101,92	137,0
Negative Imbalance	-104,21	-140,1
Total Cost of Balancing Energy (CZK):		58 481 319,20

**Gas**


	Volume (GWh)
Positive Imbalance	500,34
Negative Imbalance	-366,21
Daily positive balancing volume	97,52
Daily negative balancing volume	-11,83

**REGISTRATION DATA**

Registered Market Participants - electricity and gas	31 602
Balance responsible party - electricity	118
Balance responsible party - gas	99



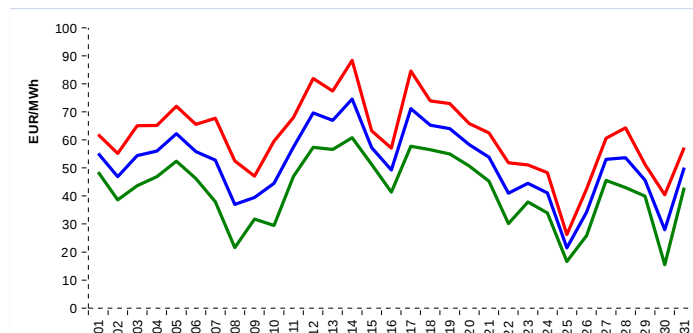
Changes of Supplier	25 286
Total Amount of Registered delivery points	3 801 010

Changes of Supplier	16 905
Total Amount of Registered delivery points	1 328 132

**SHORT-TERM MARKETS**

Electricity	Volume (MWh)	Average Price
Block Market	1 476,0	1 323,49 CZK/MWh
Day-Ahead M. - Sell	2 079 181,3	
Day-Ahead M. - Purchase	1 886 508,2	51,75 EUR/MWh
IM	43 436,0	50,02 EUR/MWh
IM - block contracts	1 382,0	58,83 EUR/MWh

Gas	Volume (MWh)	Average Price (EUR/MWh)
IM	364 211,9	23,75

**SPOT MARKET INDEX**


— SPOT MARKET BASE LOAD INDEX  
— SPOT MARKET PEAK LOAD INDEX  
— SPOT MARKET OFFPEAK LOAD INDEX

**Emission Allowance Trading**

Transaction Type	Volume of Units	No. of Transactions
Allowances	88 780 221	103
Kyoto Units	11 105	2
<b>Sum</b>	<b>88 791 326</b>	<b>105</b>

**Note:**

The data is valid to the last day of the calendar month and may vary according to the version of the settlement of imbalances.  
 The point of delivery and transfer registered in the OTE's system in case of the first change of supplier. Number of changes of supplier reflects the total number of delivery points, on which change of supplier occurred.  
 More Information is available on <http://www.ote-cr.cz>