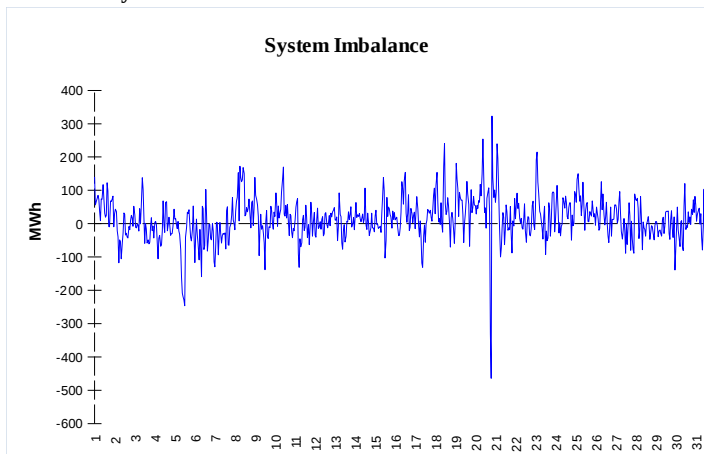
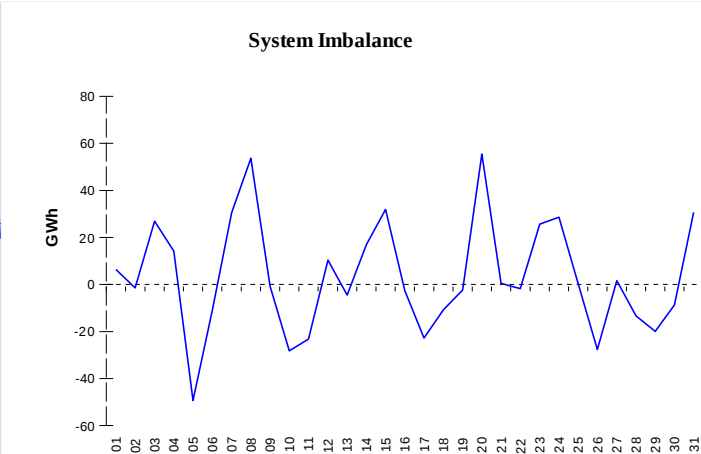


**IMBALANCES**
**Electricity**


	Volume (GWh)	Average Volume (MWh/hod)
Positive Imbalance	117,46	157,9
Negative Imbalance	-106,52	-143,2
Total Cost of Balancing Energy (CZK):		45 502 619,30

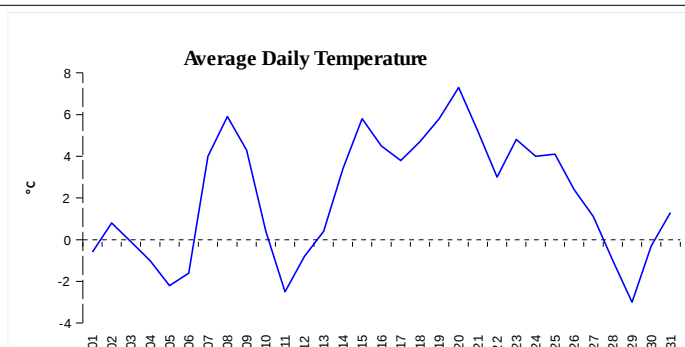
**Gas**


	Volume (GWh)
Positive Imbalance	562,98
Negative Imbalance	-457,65
Daily positive balancing volume	148,92
Daily negative balancing volume	-55,76

**REGISTRATION DATA**

Registered Market Participants - electricity and gas	31 967
Balance responsible party - electricity	124
Balance responsible party - gas	98

Changes of Supplier	29 565
Total Amount of Registered delivery points	6 065 393

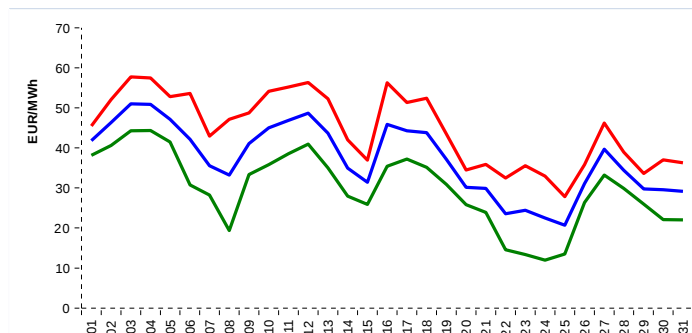


Changes of Supplier	18 213
Total Amount of Registered delivery points	1 385 819

**SHORT-TERM MARKETS**

Electricity	Volume (MWh)	Average Price
Block Market	24,0	1 260,00 CZK/MWh
Day-Ahead M. - Sell	1 964 126,2	37,27 EUR/MWh
Day-Ahead M. - Purchase	1 513 973,0	
IM	441 442,6	34,55 EUR/MWh
IM - block contracts	312,0	37,51 EUR/MWh

Gas	Volume (MWh)	Average Price (EUR/MWh)
IM	484 148,6	13,18

**SPOT MARKET INDEX**


— SPOT MARKET BASE LOAD INDEX  
— SPOT MARKET PEAK LOAD INDEX  
— SPOT MARKET OFFPEAK LOAD INDEX

**Emission Allowance Trading**

Transaction Type	Volume of Units	No. of Transactions
Allowances	81 655 027	121
Kyoto Units	2 509	1
<b>Sum</b>	<b>81 657 536</b>	<b>122</b>

**Note:**

The data is valid to the last day of the calendar month and may vary according to the version of the settlement of imbalances. The point of delivery and transfer registered in the OTE's system in case of the first change of supplier. Number of changes of supplier reflects the total number of delivery points, on which change of supplier occurred. More Information is available on <http://www.ote-cr.cz>