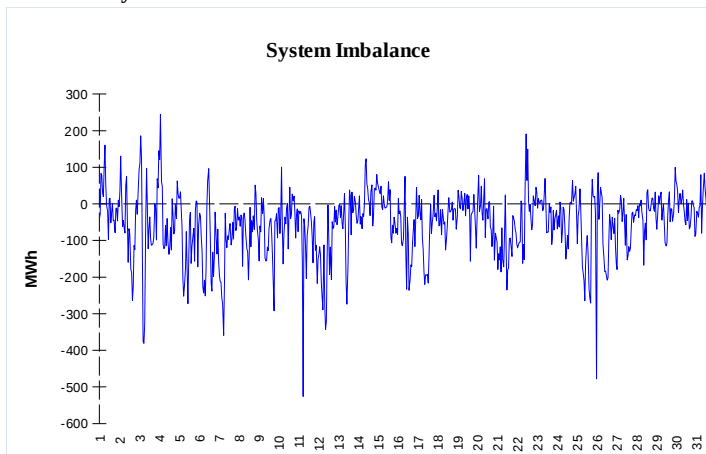
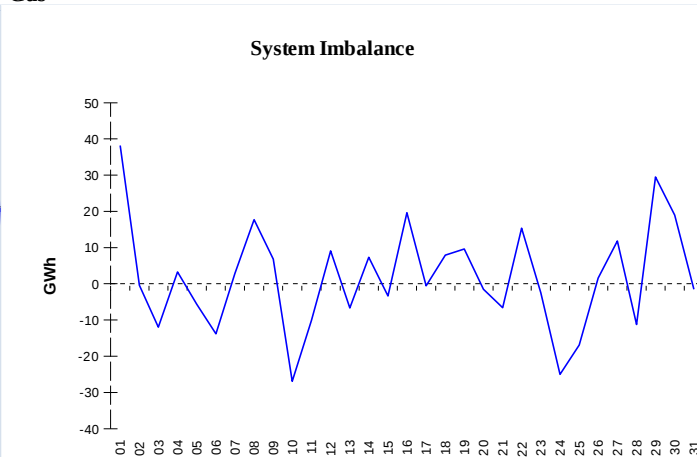


IMBALANCES
Electricity


	Volume (GWh)	Average Volume (MWh/hod)
Positive Imbalance	79,38	106,7
Negative Imbalance	-119,93	-161,2
Total Cost of Balancing Energy (CZK):		307 129 883,16

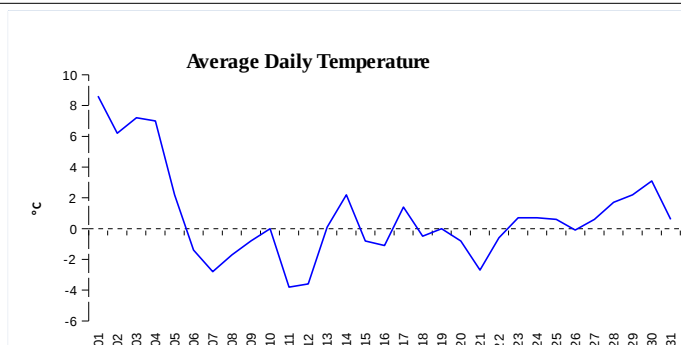
Gas


	Volume (GWh)
Positive Imbalance	463,49
Negative Imbalance	-417,78
Daily positive balancing volume	110,88
Daily negative balancing volume	-51,11

REGISTRATION DATA

Registered Market Participants - electricity and gas	32 881
Balance responsible party - electricity	120
Balance responsible party - gas	118

Changes of Supplier	181 937
Total Amount of Registered delivery points	6 198 160

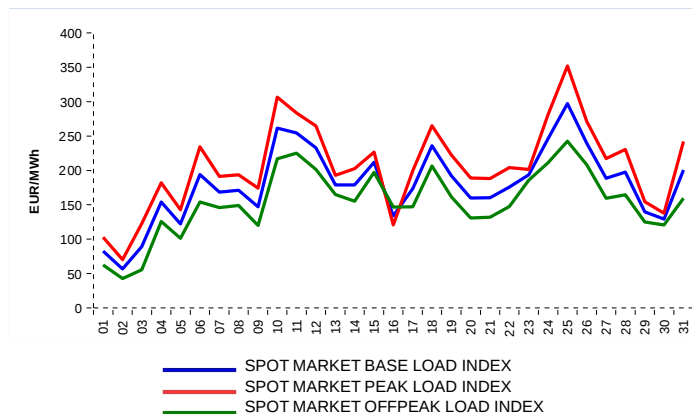


Changes of Supplier	73 914
Total Amount of Registered delivery points	2 817 712

SHORT-TERM MARKETS

Electricity	Volume (MWh)	Average Price
Block Market	0,0	0,00 CZK/MWh
Day-Ahead M. - Sell	1 918 134,7	
Day-Ahead M. - Purchase	976 032,7	179,57 EUR/MWh
IM	464 913,4	190,37 EUR/MWh
IM - block contracts	0,0	0,00 EUR/MWh

Gas	Volume (MWh)	Average Price (EUR/MWh)
IM	456 679,9	83,08

SPOT MARKET INDEX

Emission Allowance Trading

Transaction Type	Volume of Units	No. of Transactions
Allowances	19 586 838	65
Aviation Allowances	0	0
Sum	19 586 838	65

Note:

The data is valid to the last day of the calendar month and may vary according to the version of the settlement of imbalances.
The point of delivery and transfer registered in the OTE's system in case of the first change of supplier. Number of changes of supplier reflects the total number of delivery points, on which change of supplier occurred.
More Information is available on <http://www.ote-cr.cz>