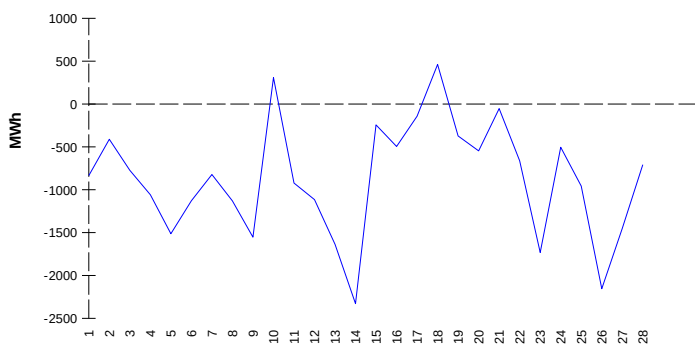


IMBALANCES

Electricity

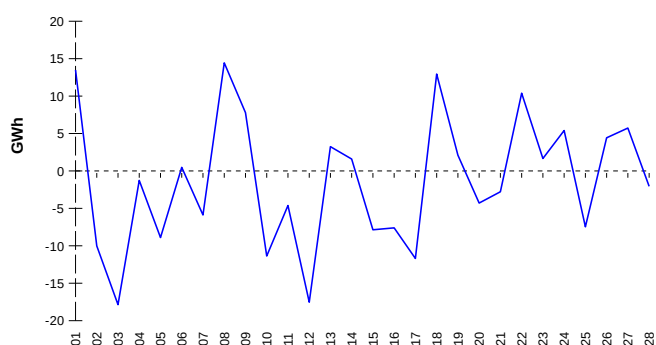
System Imbalance (total volume by days)



	Volume (GWh)	Average Volume (MWh/hour)
Positive Imbalance	99,76	37,1
Negative Imbalance	-124,23	-46,2
Total Cost of Balancing Energy (CZK):		166 590 237,85

Gas

System Imbalance



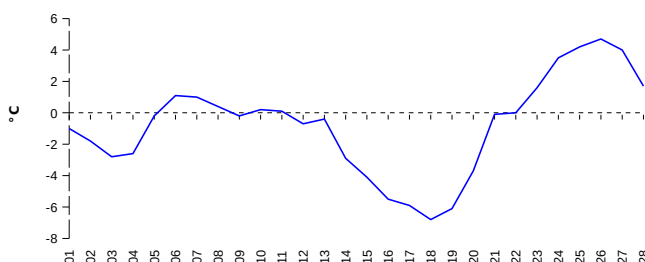
Positive Imbalance	294,48
Negative Imbalance	-332,06
Daily positive balancing volume	16,58
Daily negative balancing volume	-69,38

REGISTRATION DATA

Registered Market Participants - electricity and gas	34 923
Balance responsible party - electricity	152
Balance responsible party - gas	142

Changes of Supplier	38 633
Total Amount of Registered delivery points	6 400 664

Average Daily Temperature



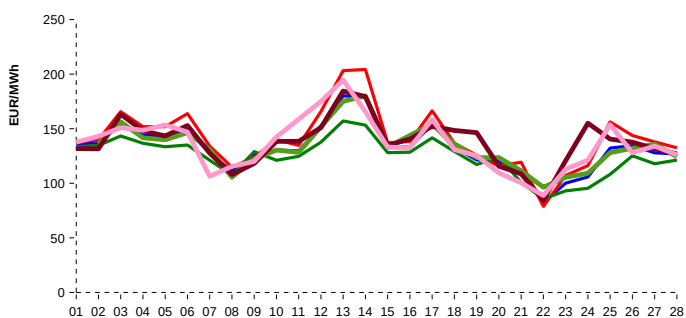
Changes of Supplier	12 943
Total Amount of Registered delivery points	2 722 529

SHORT-TERM MARKETS

Electricity	Volume (MWh)	Average Price
IDA - Sell	53 319,0	131,93 EUR/MWh
IDA - Purchase	36 469,0	
Day-Ahead M. - Sell	2 685 678,6	132,64 EUR/MWh
Day-Ahead M. - Purchase	1 755 355,4	
IM	425 558,1	134,24 EUR/MWh
IM - block contracts	0,0	0,00 EUR/MWh

Gas	Volume (MWh)	Average Price (EUR/MWh)
IM	459 597,2	53,37

SPOT MARKET INDEX



SPOT MARKET BASE LOAD INDEX	IDA1 BASE LOAD INDEX
SPOT MARKET PEAK LOAD INDEX	IDA2 BASE LOAD INDEX
SPOT MARKET OFFPEAK LOAD INDEX	IDA3 BASE LOAD INDEX

REGISTRY FOR GREENHOUSE GAS EMISSION

Transaction Type	Volume of Units	No. of Transactions
Allowances	2 835 760	61
Aviation Allowances	250	1
Sum	2 836 010	62

Note:

The data is valid to the last day of the calendar month and may vary according to the version of the settlement of imbalances. The point of delivery and transfer registered in the OTE's system in case of the first change of supplier. Number of changes of supplier reflects the total number of delivery points, on which change of supplier occurred. More Information is available on <http://www.ote-cr.cz>