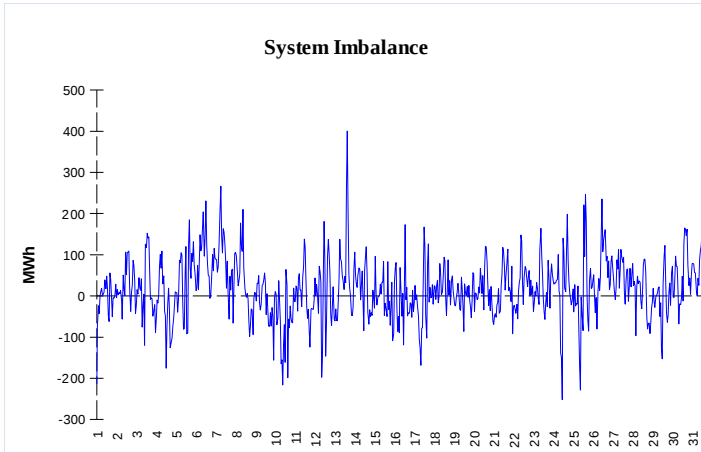


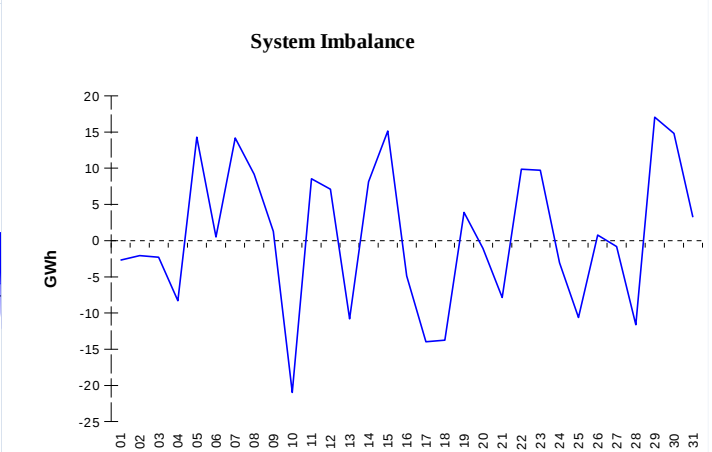
IMBALANCES

Electricity



| | Volume (GWh) | Average Volume (MWh/hod) |
|---------------------------------------|--------------|--------------------------|
| Positive Imbalance | 95,77 | 128,7 |
| Negative Imbalance | -82,20 | -110,5 |
| Total Cost of Balancing Energy (CZK): | | 299 923 901,42 |

Gas

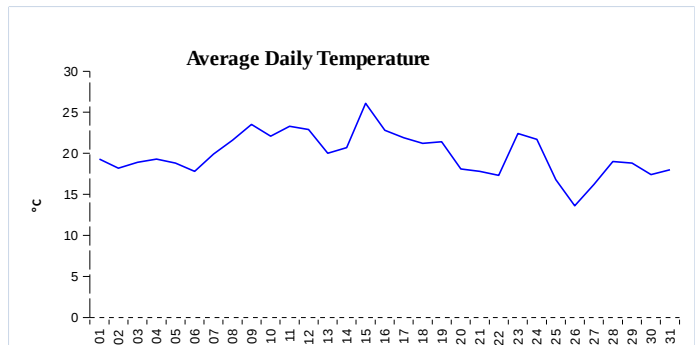


| | Volume (GWh) |
|---------------------------------|--------------|
| Positive Imbalance | 284,65 |
| Negative Imbalance | -261,72 |
| Daily positive balancing volume | 30,67 |
| Daily negative balancing volume | -36,35 |

REGISTRATION DATA

| | |
|--|--------|
| Registered Market Participants - electricity and gas | 33 806 |
| Balance responsible party - electricity | 139 |
| Balance responsible party - gas | 129 |

| | |
|--|-----------|
| Changes of Supplier | 32 551 |
| Total Amount of Registered delivery points | 6 297 017 |



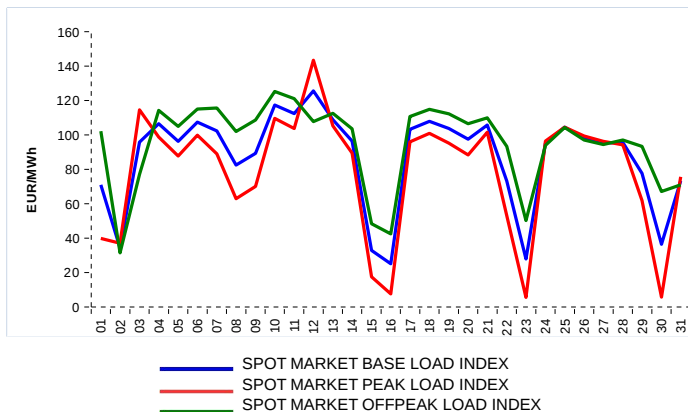
| | |
|--|-----------|
| Changes of Supplier | 10 261 |
| Total Amount of Registered delivery points | 2 761 140 |

SHORT-TERM MARKETS

| Electricity | Volume (MWh) | Average Price |
|-------------------------|--------------|----------------|
| Day-Ahead M. - Sell | 2 086 353,9 | 87,06 EUR/MWh |
| Day-Ahead M. - Purchase | 1 373 901,6 | |
| IM | 488 583,8 | 88,35 EUR/MWh |
| IM - block contracts | 72,0 | 130,90 EUR/MWh |

| Gas | Volume (MWh) | Average Price (EUR/MWh) |
|-----|--------------|-------------------------|
| IM | 354 921,9 | 31,42 |

SPOT MARKET INDEX



Emission Allowance Trading

| Transaction Type | Volume of Units | No. of Transactions |
|---------------------|------------------|---------------------|
| Allowances | 1 205 618 | 40 |
| Aviation Allowances | 27 000 | 2 |
| Sum | 1 232 618 | 42 |

Note:

The data is valid to the last day of the calendar month and may vary according to the version of the settlement of imbalances. The point of delivery and transfer registered in the OTE's system in case of the first change of supplier. Number of changes of supplier reflects the total number of delivery points, on which change of supplier occurred. More Information is available on <http://www.ote-cr.cz>