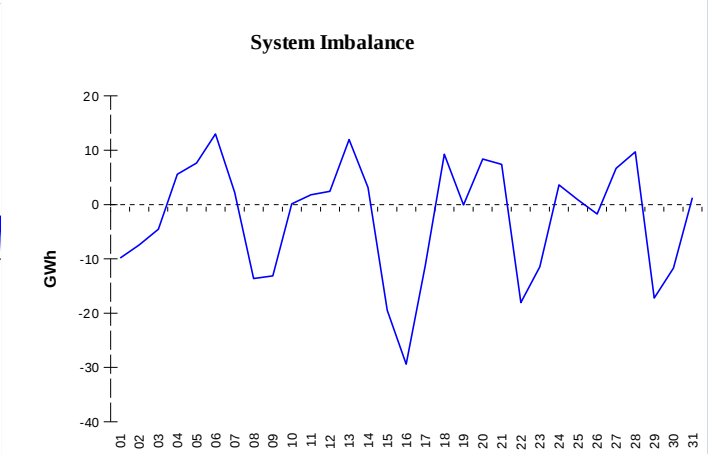
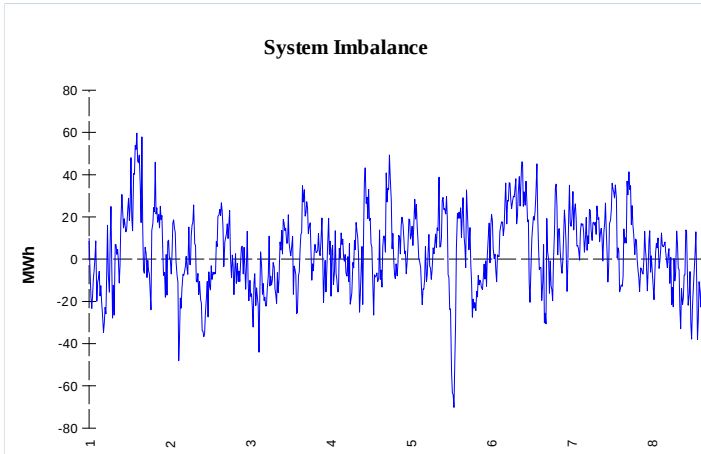


IMBALANCES

Electricity

Gas

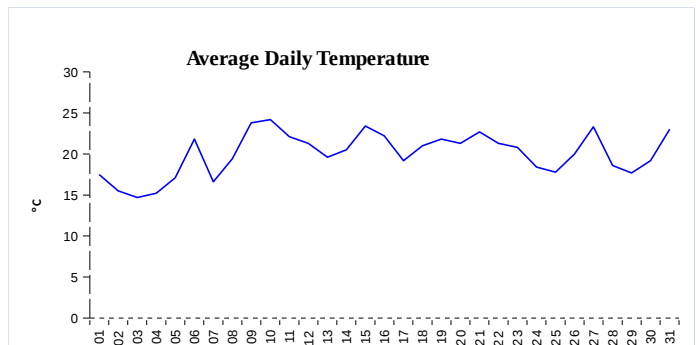


	Volume (GWh)	Average Volume (MWh/hod)
Positive Imbalance	105,73	35,5
Negative Imbalance	-98,63	-33,1
Total Cost of Balancing Energy (CZK):		222 432 513,67

	Volume (GWh)
Positive Imbalance	246,07
Negative Imbalance	-320,09
Daily positive balancing volume	8,93
Daily negative balancing volume	-67,97

REGISTRATION DATA

Registered Market Participants - electricity and gas	34 544
Balance responsible party - electricity	141
Balance responsible party - gas	133



Changes of Supplier	38 301
Total Amount of Registered delivery points	6 354 627

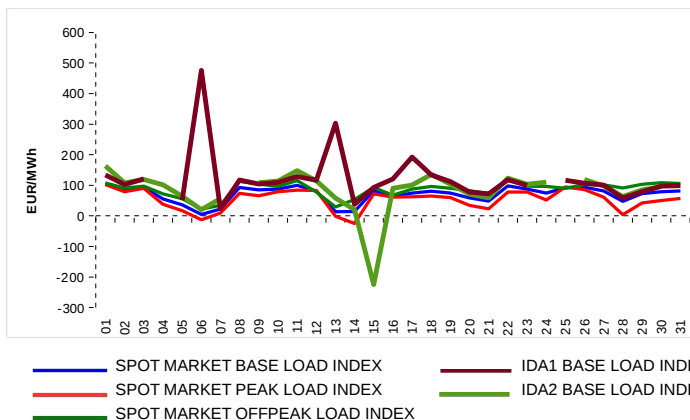
Changes of Supplier	12 367
Total Amount of Registered delivery points	2 734 550

SHORT-TERM MARKETS

Electricity	Volume (MWh)	Average Price
IDA - Sell	32 491,8	75,22 EUR/MWh
IDA - Purchase	19 549,0	
Day-Ahead M. - Sell	2 115 207,4	69,90 EUR/MWh
Day-Ahead M. - Purchase	1 630 164,9	
IM	468 989,6	135,70 EUR/MWh
IM - block contracts	0,0	0,00 EUR/MWh

Gas	Volume (MWh)	Average Price (EUR/MWh)
IM	255 398,1	34,91

SPOT MARKET INDEX



Emission Allowance Trading

Transaction Type	Volume of Units	No. of Transactions
Allowances	7 308 849	35
Aviation Allowances	201 000	1
Sum	7 509 849	36

Note:

The data is valid to the last day of the calendar month and may vary according to the version of the settlement of imbalances. The point of delivery and transfer registered in the OTE's system in case of the first change of supplier. Number of changes of supplier reflects the total number of delivery points, on which change of supplier occurred. More Information is available on <http://www.ote-cr.cz>