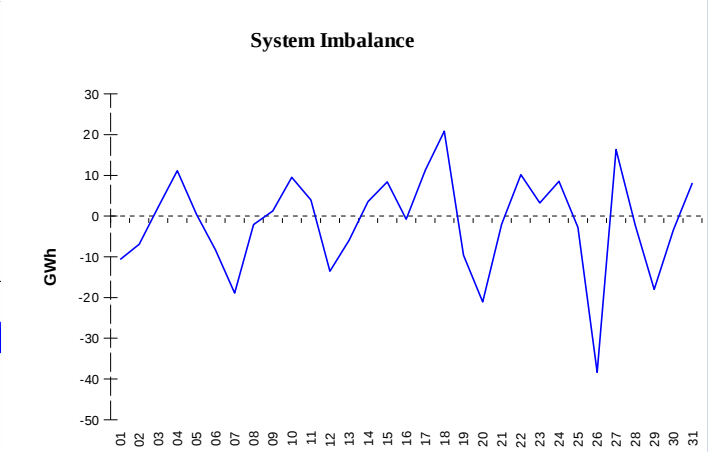
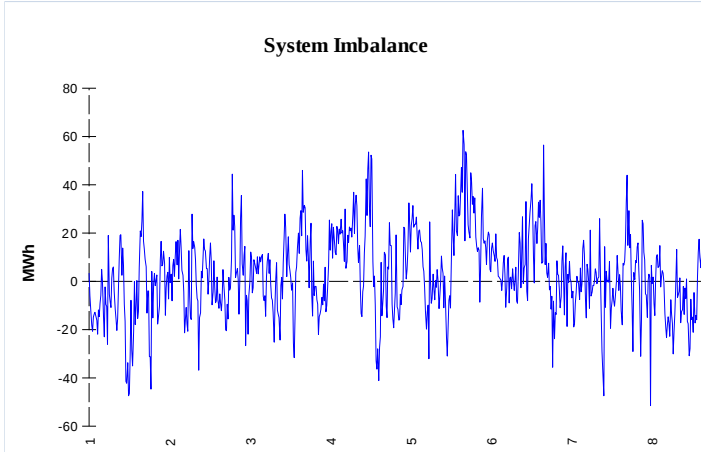


IMBALANCES

Electricity

Gas

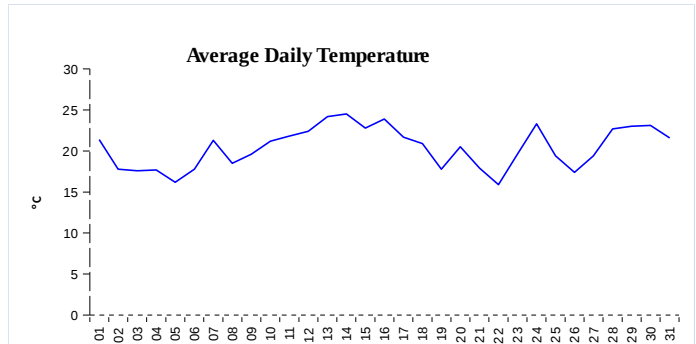


	Volume (GWh)	Average Volume (MWh/hod)
Positive Imbalance	99,35	33,4
Negative Imbalance	-97,62	-32,8
Total Cost of Balancing Energy (CZK):		273 849 086,11

	Volume (GWh)
Positive Imbalance	260,67
Negative Imbalance	-306,09
Daily positive balancing volume	14,45
Daily negative balancing volume	-41,00

REGISTRATION DATA

Registered Market Participants - electricity and gas	34 607
Balance responsible party - electricity	142
Balance responsible party - gas	132



Changes of Supplier	33 671
Total Amount of Registered delivery points	6 357 652

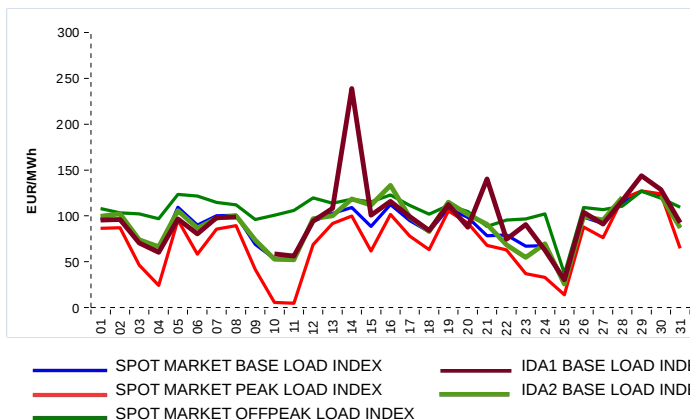
Changes of Supplier	13 245
Total Amount of Registered delivery points	2 731 994

SHORT-TERM MARKETS

Electricity	Volume (MWh)	Average Price
IDA - Sell	31 974,7	84,66 EUR/MWh
IDA - Purchase	38 116,0	
Day-Ahead M. - Sell	2 215 853,5	88,80 EUR/MWh
Day-Ahead M. - Purchase	1 562 343,2	
IM	425 097,6	105,72 EUR/MWh
IM - block contracts	0,0	0,00 EUR/MWh

Gas	Volume (MWh)	Average Price (EUR/MWh)
IM	225 763,4	40,60

SPOT MARKET INDEX



Emission Allowance Trading

Transaction Type	Volume of Units	No. of Transactions
Allowances	6 509 371	24
Aviation Allowances	168 000	3
<b>Sum</b>	<b>6 677 371</b>	<b>27</b>

Note:

The data is valid to the last day of the calendar month and may vary according to the version of the settlement of imbalances. The point of delivery and transfer registered in the OTE's system in case of the first change of supplier. Number of changes of supplier reflects the total number of delivery points, on which change of supplier occurred. More Information is available on <http://www.ote-cr.cz>