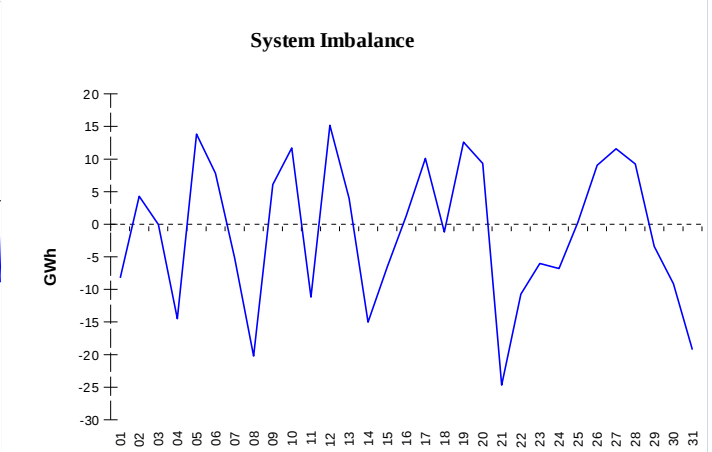
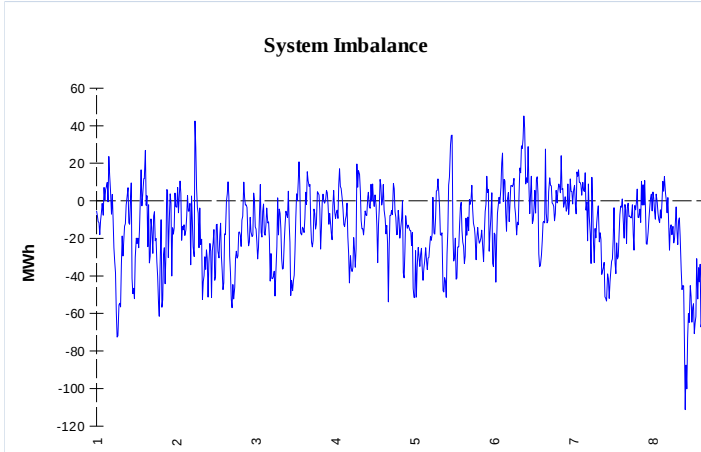


IMBALANCES

Electricity

Gas

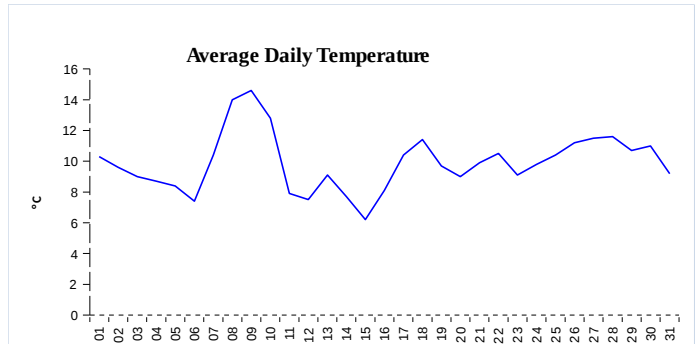


	Volume (GWh)	Average Volume (MWh/hod)
Positive Imbalance	113,63	38,1
Negative Imbalance	-126,07	-42,3
Total Cost of Balancing Energy (CZK):		90 607 150,96

	Volume (GWh)
Positive Imbalance	344,41
Negative Imbalance	-380,36
Daily positive balancing volume	21,38
Daily negative balancing volume	-42,05

REGISTRATION DATA

Registered Market Participants - electricity and gas	34 720
Balance responsible party - electricity	146
Balance responsible party - gas	134



Changes of Supplier	40 726
Total Amount of Registered delivery points	6 364 474

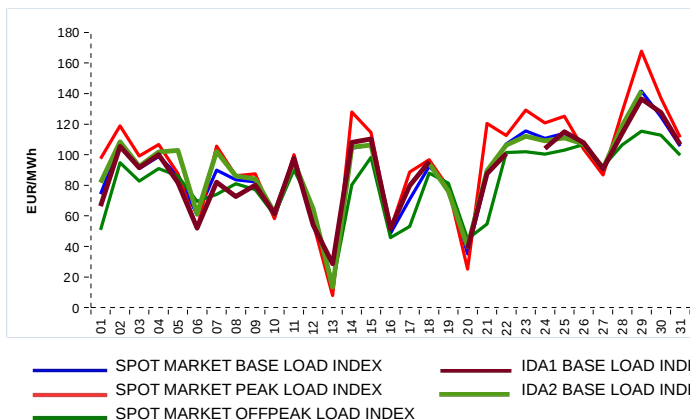
Changes of Supplier	18 987
Total Amount of Registered delivery points	2 729 418

SHORT-TERM MARKETS

Electricity	Volume (MWh)	Average Price
IDA - Sell	35 147,9	85,15 EUR/MWh
IDA - Purchase	31 536,4	
Day-Ahead M. - Sell	2 104 566,6	88,92 EUR/MWh
Day-Ahead M. - Purchase	1 541 784,5	
IM	0,0	0,00 EUR/MWh
IM - block contracts	1 350,0	203,33 EUR/MWh

Gas	Volume (MWh)	Average Price (EUR/MWh)
IM	308 670,5	43,28

SPOT MARKET INDEX



Emission Allowance Trading

Transaction Type	Volume of Units	No. of Transactions
Allowances	3 103 469	46
Aviation Allowances	72 000	2
Sum	3 175 469	47

Note:

The data is valid to the last day of the calendar month and may vary according to the version of the settlement of imbalances. The point of delivery and transfer registered in the OTE's system in case of the first change of supplier. Number of changes of supplier reflects the total number of delivery points, on which change of supplier occurred. More Information is available on <http://www.ote-cr.cz>