



***Overview of planned changes  
deployed in CS OTE system as of  
June 25, 2024, and July 1, 2024***

***Presentation related to OTE webinar (held in Czech language)  
June 18, 2024***

## 1. Introduction

## 2. Overview of Changes in CS OTE in June 2024

- 2.1 Changes in CS OTE from June 13, 2024
- 2.2 Changes in CS OTE from June 25, 2024 and July 1, 2024

## 3. Changes in Individual Areas/Modules of CS OTE

- 3.1 CDS Electricity
- 3.2 Imbalance Settlement of Electricity
- 3.3 Financial Settlement & Risk Management
- 3.4 CDS Gas
- 3.5 Public OTE website

## 4. Changes in other Areas/Modules of CS OTE:

- 4.1 Day-ahead Market (DM)
- 4.2 Intraday Auctions (IDA)
- 4.3 Continuous Intraday Market (IM)
- 4.4 Registration of Realization Diagrams (RRD)

## 5. Changes in Automatic Communication - *reminder*

## 6. New Version of Signature Component OTE PKI in CS OTE - *reminder*

## 7. Summary Plan of Changes Deployment

## 8. Compensation of Electricity and Gas Prices

## 9. Frequent Q&As

## 10. Conclusion

# 1. Introduction

- In connection with the changes in short-term electricity markets in June and July 2024, market operator provides the following material in order to introduce these changes to market participants following:
  - The planned implementation of a 15-minute settlement period in the Czech Republic as of July 1, 2024
  - Information webinar held on February 13, 2024, and March 7, 2024, and May 28, 2024 (presentation from webinars and other summarizing information including documentation are available [here](#) )
  - Questions received from individual market participants

## How to ask questions?

- Questions related to the transfer of measurement data or imbalance settlement please send to [elektro@ote-cr.cz](mailto:elektro@ote-cr.cz)
- Questions regarding trading platforms (DM, IM, IDA, RRD) please send to [market@ote-cr.cz](mailto:market@ote-cr.cz)

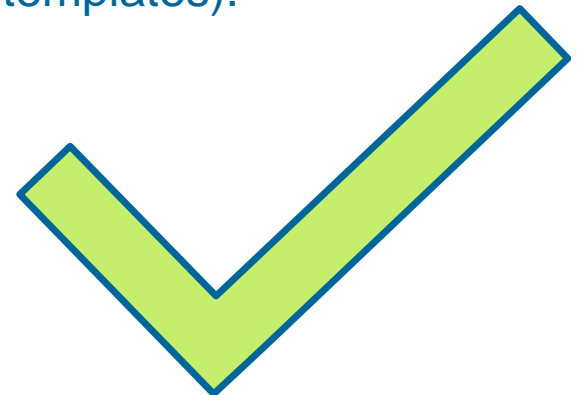
*Up-to-date information regarding the introduction and testing of the 15-minute settlement and trading period is regularly published on the [OTE's website](#).*

## **2. Overview of Changes in CS OTE in June 2024**

# Thursday June 13, 2024

- From Wednesday June 12, 2024 to Thursday June 13, 2024, several significant changes were deployed in the production environment of the market operator's information system, in particular:
  - Implementation of the **new web interface of the CS OTE portal** for selected forms and reports, including modifications to their graphic design,
  - Implementation of **intraday auctions (IDA)** in the production environment of short-term electricity markets operated by OTE,
  - Deployment of **new (universal) message formats** used for communication with CS OTE (WSDL and XSD templates).

→ **More detailed information on the changes implemented in CS OTE from 13th June 2024 was the subject of the webinar held on 28th May 2024 (presentation [here](#)).**



### Tuesday June 25, 2024

- ❑ From Monday June 24, 2024 to Tuesday June 25, 2024, other significant changes will be deployed in the production environment of the market operator's information system, in particular the deployment of the new web interface of the CS OTE portal in the area/menu:
  - **CDS Electricity**
  - **CDS Gas** (CDS/Data PDT section)
  - **Financial Settlement & Risk Management**
- **Shut-down maintenance is planned on June 24, 2024 from 04:00 p.m. to 11:59 p.m.**
  - Shut-down maintenance of OTE-COM is expected only for up to 1-2 hours during the mentioned time range.

### Sunday June 30, 2024 / Monday July 1, 2024

- ❑ On June 30, 2024 / July 1, 2024, the production environment of CS OTE will switch to a 15-minute settlement and trading period in the electricity sector.
  - ❑ **Shut-down maintenance of CS OTE is NOT expected.**

→ **More detailed information on the changes implemented in CS OTE from June 25, 2024, and July 1, 2024, are the subject of this webinar**

# **3. Changes in individual areas/modules of CS OTE**



## 3.1 Changes in CS OTE – CDS Electricity

### CDS Electricity (1<sup>st</sup> part)

- ❑ On June 24, 2024 (evening), the [new user interface of the CDS Electricity module](#) will be deployed.
  
- ❑ List of items (menu CDS – electricity) that will be in the new interface in the production CS OTE portal:
  - Electricity -> CDS -> PDT -> PDT code list update
  - Electricity -> CDS -> PDT -> Simplified list of PDT
  - Electricity -> CDS -> PDT -> List of PDT by service
  - Electricity -> CDS -> PDT -> PDT disconnection data, PDT planned disconnection, PDT realized disconnection
  - Electricity -> CDS -> PDT -> PDT with more transfer points
  - Electricity -> CDS -> PDT -> List of PDT in partnership
  - Electricity -> CDS -> PDT -> PDT - expiration of services
  - Electricity -> CDS -> PDT -> PDT – validity of parameter
  - Electricity -> CDS -> Metered data
  - Electricity -> CDS -> Planned diagrams

## 3.1 Changes in CS OTE – CDS Electricity (new interface)

### CDS Electricity - PDT Technical Master Data Query (New Interface) (2<sup>nd</sup> part)

- ❑ User selects the selection criteria (EAN PDT, period, data version...) that they want to display
- ❑ Possibility to specify EAN PDT individually or import them in bulk
- ❑ After selecting the criteria, press the "Load" button
- ❑ „Table with results" will appear as output

CDS / PDT / Data PDT ↗

#### Data PDT

Parameters

EAN PDT  
 or [Import EAN](#)  
Enter multiple EANs with the separator ";" or a comma "," or below.

\* Date from-to    PDT type    Grid    Metering type    TDD class

|     
    
    
    

**Load**

Message no.WEBCDS0000010894929 was received successfully

#### Table with results

EAN PDT	Date from	Date to	PDT Name	PDT type	Grid	Metering type	Metering category	Consumption category
██████████	24/07/2022	31/12/2024		Consumption	0041	B		MOP

Output data (Table with results) can be:

- ❑ Viewed on the portal
- ❑ Exported to a file
- ❑ Generated to portalbox
- ❑ Sent by automatic communication

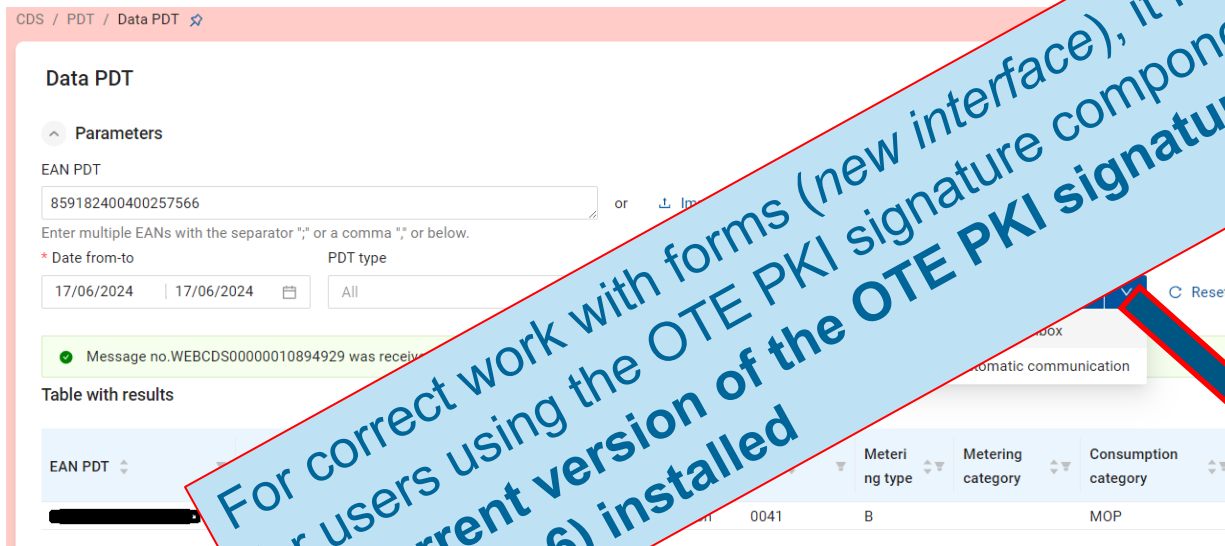
TDD class

**Load**

### 3.1 Changes in CS OTE – CDS Electricity (new interface)

#### CDS Electricity - PDT Technical Master Data Query (New Interface) (2<sup>nd</sup> part)

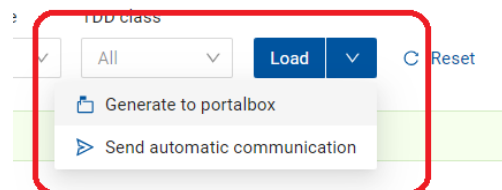
- ❑ User selects the selection criteria (EAN PDT, period, data version...) that they want to display
- ❑ Possibility to specify EAN PDT individually or import them in bulk
- ❑ After selecting the criteria, press the "Load" button
- ❑ „Table with results" will appear as output



For correct work with forms (new interface), it is necessary for users using the OTE PKI signature component to have the current version of the OTE PKI signature component (version 2.6) installed

Output data (Table with results) can be:

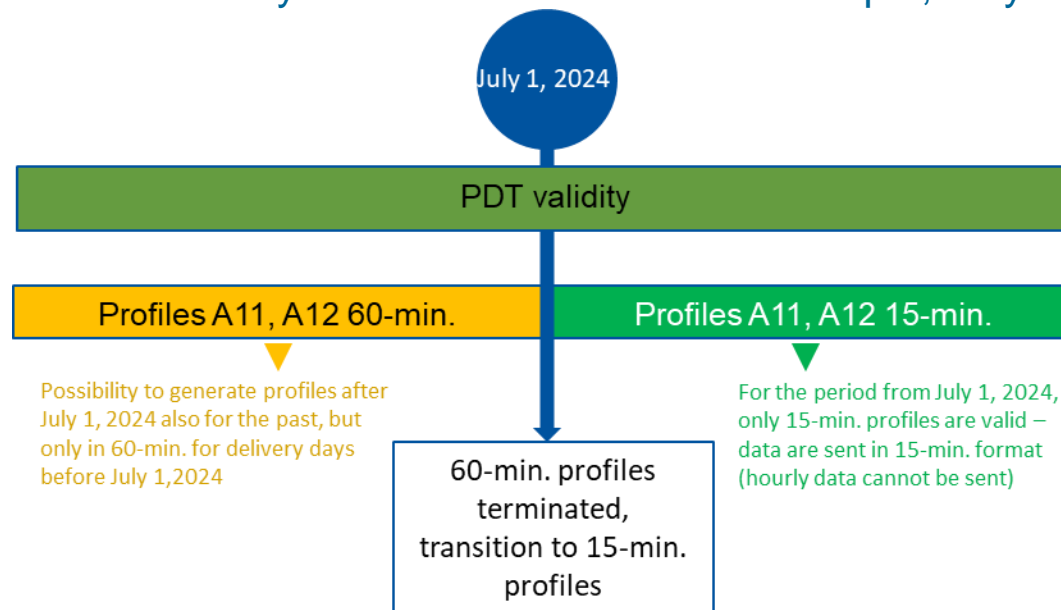
- ❑ Viewed on the screen
- ❑ Exported to a file
- ❑ Generated to portalbox
- ❑ Sent by automatic communication



## 3.1 Changes in CS OTE – CDS Electricity

### CDS Electricity (3<sup>rd</sup> part)

- ❑ Predictions will take place from June 26, 2024 (onwards) for the delivery day July 1, 2024 and the following delivery days in 15-min. resolution.
- ❑ Profile measurement data have to be sent for the delivery day of July 1, 2024 and the following delivery days only in 15-min. resolution.
  - ❑ Sending measurement data in 15-min. format can be expected for the first time after July 2, 2024 0:00 (for delivery day July 1, 2024)
- ❑ Profile measurement data for delivery days up to and including June 30, 2024 will still be sent in 60-min. resolution, even after July 1, 2024 for the purpose of possible corrections of measurement data for the period up to June 30, 2024 for the purpose of monthly and final monthly settlement of the months of April, May and June 2024.



### **Imbalance Settlement of Electricity (1<sup>st</sup> part)**

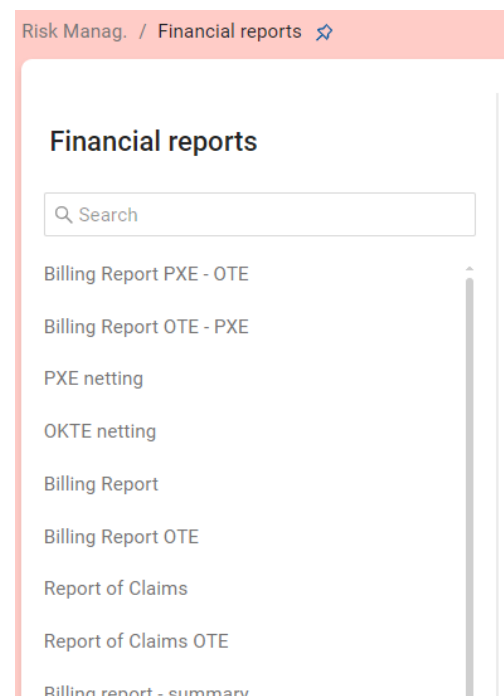
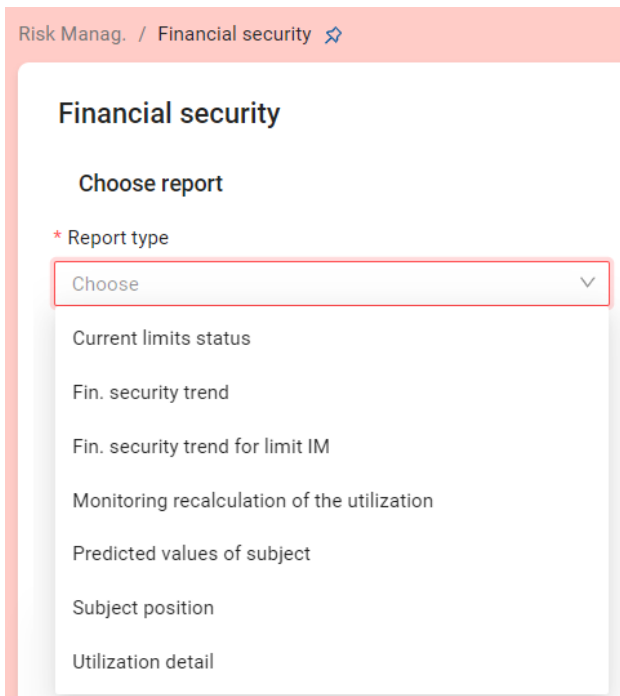
- ❑ From June 13, 2024, a new user interface and newly implemented automatic communication with CS OTE have been deployed for the settlement of electricity imbalances.
  
- ❑ **The daily settlement of electricity imbalances will take place for the period:**
  - ❑ until **June 30, 2024** (i.e. for the last time for the delivery day of June 30, 2024) in **60-min. resolution**
  - ❑ from **July 1, 2024** (i.e. for the first time on July 2, 2024 for the delivery day of July 1, 2024) in **15-min. resolution**
  
- ❑ **The monthly and final monthly settlement of electricity imbalances for the period up to the delivery day of June 30, 2024 will take place on the relevant dates M+1 and M+4 in 60-min. resolution**

### **Imbalance Settlement of Electricity (2<sup>nd</sup> part)**

- ❑ From the delivery day July 1, 2024 (onwards) the system imbalance as a part of imbalance settlement will only be evaluated in 15-min. granularity.
  
- ❑ Additionally, with the effect from the delivery day July 1, 2024, the settlement price of imbalances and counter-imbalances will be unified in the Czech Republic.
  - ❑ In accordance with Annex No. 8 of Decree No. 408/2015 Coll. the Electricity Market Rules

## Financial Settlement & Risk Management (1<sup>st</sup> part)

- ❑ From June 13, 2024, relevant reports and automatic communication have been expanded with a new type of trade IDA in electricity.
- ❑ On June 24, 2024 (evening), the new user interface of the Financial Settlement & Risk Management module will be deployed.



## Financial Settlement & Risk Management (2<sup>nd</sup> part)

- ❑ Risk exposure will be calculated for the **delivery day of July 1, 2024** and the following delivery days in **15-min. resolution** and the existing hourly reports will be adjusted to a **15-min. period**.

	00:00	00:15	00:30	00:45	01:00	01:15	01:30	01:45	02:00	02:15	02:30	02:45	03:00	03:15	03:30	03:45	04:00	04:15	04:30	04:45	05:00	05:15	05:30	05:45
Negative imbalance [MWh]	0.000	0.000	0.000	0.000	0.000	0.000	0.000	0.000	0.000	0.000	0.000	0.000	0.000	0.000	0.000	0.000	0.000	0.000	0.000	0.000	0.000	0.000	0.000	0.000
Negative imbalance [CZK]	0.00	0.00	0.00	0.00	0.00	0.00	0.00	0.00	0.00	0.00	0.00	0.00	0.00	0.00	0.00	0.00	0.00	0.00	0.00	0.00	0.00	0.00	0.00	0.00
Positive imbalance [MWh]	0.000	0.000	0.000	0.000	0.000	0.000	0.000	0.000	0.000	0.000	0.000	0.000	0.000	0.000	0.000	0.000	0.000	0.000	0.000	0.000	0.000	0.000	0.000	0.000
Positive imbalance [CZK]	0.00	0.00	0.00	0.00	0.00	0.00	0.00	0.00	0.00	0.00	0.00	0.00	0.00	0.00	0.00	0.00	0.00	0.00	0.00	0.00	0.00	0.00	0.00	0.00
	06:00	06:15	06:30	06:45	07:00	07:15	07:30	07:45	08:00	08:15	08:30	08:45	09:00	09:15	09:30	09:45	10:00	10:15	10:30	10:45	11:00	11:15	11:30	11:45
Negative imbalance [MWh]	0.000	0.000	0.000	0.000	0.000	0.000	0.000	0.000	0.000	0.000	0.000	0.000	0.000	0.000	0.000	0.000	0.000	0.000	0.000	0.000	0.000	0.000	0.000	0.000
Negative imbalance [CZK]	0.00	0.00	0.00	0.00	0.00	0.00	0.00	0.00	0.00	0.00	0.00	0.00	0.00	0.00	0.00	0.00	0.00	0.00	0.00	0.00	0.00	0.00	0.00	0.00
Positive imbalance [MWh]	0.000	0.000	0.000	0.000	0.000	0.000	0.000	0.000	0.000	0.000	0.000	0.000	0.000	0.000	0.000	0.000	0.000	0.000	0.000	0.000	0.000	0.000	0.000	0.000
Positive imbalance [CZK]	0.00	0.00	0.00	0.00	0.00	0.00	0.00	0.00	0.00	0.00	0.00	0.00	0.00	0.00	0.00	0.00	0.00	0.00	0.00	0.00	0.00	0.00	0.00	0.00
	12:00	12:15	12:30	12:45	13:00	13:15	13:30	13:45	14:00	14:15	14:30	14:45	15:00	15:15	15:30	15:45	16:00	16:15	16:30	16:45	17:00	17:15	17:30	16:45
Negative imbalance [MWh]	0.000	0.000	0.000	0.000	0.000	0.000	0.000	0.000	0.000	0.000	0.000	0.000	0.000	0.000	0.000	0.000	0.000	0.000	0.000	0.000	0.000	0.000	0.000	0.000
Negative imbalance [CZK]	0.00	0.00	0.00	0.00	0.00	0.00	0.00	0.00	0.00	0.00	0.00	0.00	0.00	0.00	0.00	0.00	0.00	0.00	0.00	0.00	0.00	0.00	0.00	0.00
Positive imbalance [MWh]	0.000	0.000	0.000	0.000	0.000	0.000	0.000	0.000	0.000	0.000	0.000	0.000	0.000	0.000	0.000	0.000	0.000	0.000	0.000	0.000	0.000	0.000	0.000	0.000
Positive imbalance [CZK]	0.00	0.00	0.00	0.00	0.00	0.00	0.00	0.00	0.00	0.00	0.00	0.00	0.00	0.00	0.00	0.00	0.00	0.00	0.00	0.00	0.00	0.00	0.00	0.00
	18:00	18:15	18:30	18:45	19:00	19:15	19:30	19:45	20:00	20:15	20:30	20:45	21:00	21:15	21:30	21:45	22:00	22:15	22:30	22:45	23:00	23:15	23:30	23:45
Negative imbalance [MWh]	0.000	0.000	0.000	0.000	0.000	0.000	0.000	0.000	0.000	0.000	0.000	0.000	0.000	0.000	0.000	0.000	0.000	0.000	0.000	0.000	0.000	0.000	0.000	0.000
Negative imbalance [CZK]	0.00	0.00	0.00	0.00	0.00	0.00	0.00	0.00	0.00	0.00	0.00	0.00	0.00	0.00	0.00	0.00	0.00	0.00	0.00	0.00	0.00	0.00	0.00	0.00
Positive imbalance [MWh]	0.000	0.000	0.000	0.000	0.000	0.000	0.000	0.000	0.000	0.000	0.000	0.000	0.000	0.000	0.000	0.000	0.000	0.000	0.000	0.000	0.000	0.000	0.000	0.000
Positive imbalance [CZK]	0.00	0.00	0.00	0.00	0.00	0.00	0.00	0.00	0.00	0.00	0.00	0.00	0.00	0.00	0.00	0.00	0.00	0.00	0.00	0.00	0.00	0.00	0.00	0.00

- ❑ The quantity values in the financial security reports will be given in MWh (as until now)!

- ❑ The transfer and display of data will be:
  - ❑ until **June 30, 2024** (delivery day) in **60-min. resolution**
  - ❑ from **July 1, 2024** (delivery day) in **15-min. resolution**



### CDS Gas

- ❑ On 24/06/2024 (evening), a new user interface of forms will be deployed in the CDS/PDT section
- ❑ List of items (menu CDS – Gas) that will be in the new interface in the CS OTE production portal:
  - **Gas -> CDS -> PDT -> Data PDT**
  - **Gas -> CDS -> PDT -> Listing PDT by service**
  - **Gas -> CDS -> PDT -> Listing expired PDT**
  - **Gas -> CDS -> PDT -> PDT listing according to the validity of the selected parameter**

### 3.4 Changes in CS OTE – CDS Gas

#### CDS Gas

- ❑ On 24/06/2024 (evening), a new user interface was introduced in the CDS/PDT section
- ❑ List of items (menu CDS – Gas) the new interface in the CS OTE production portal:
  - Gas -> CDS -> PDT -> Data
  - Gas -> CDS -> PDT
  - Gas -> CDS -> PDT
  - Gas -> CDS -> PDT

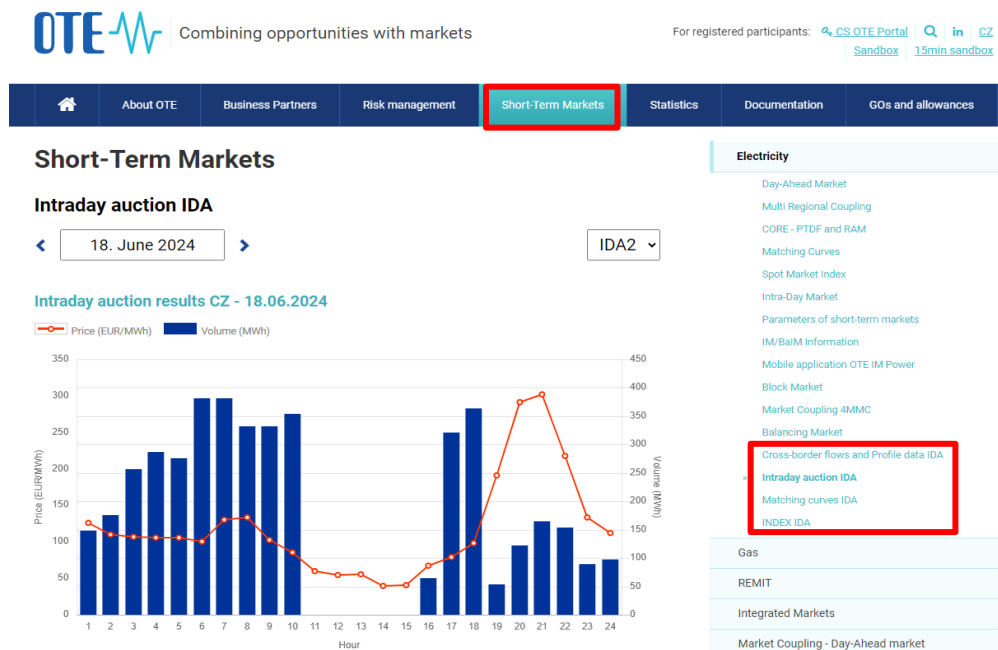
**For correct work with forms (new interface), it is necessary for users using the OTE PKI signature component to have the current version of the OTE PKI signature component (version 2.6) installed**

## 3.5 Changes in CS OTE – OTE public website

### OTE public website

- From June 13, 2024, a section for IDA and new web services have been added to the OTE public website

- User manual for web services is available [here](#).



- OTE's public website can be tested on the public website test environment here: <https://www.isotetest.ote-cr.cz/en>

- Data on the OTE public website will be displayed for the period:
  - until June 30, 2024 (delivery day) in 60-min. resolution
  - from July 1, 2024 (delivery day) in 15-min. resolution
    - except for DM data, which will continue to be in 60-min. resolution until Q1/2025
    - IM will be in both 15-min. and 60-min. resolution

# 4. Changes in Other Areas/Modules of CS OTE:

- **Short-term Electricity Markets (DM, IDA, IM)**
- **Registration of Realization Diagrams**

- ❑ The granularity of products on DM remains unchanged from July 1, 2024 - it will only be possible to trade 60-min. products on DM (possibility to trade 60min. and 15min. products is expected from Q1/2025)
- ❑ The changes that have already taken place since June 13, 2024, were communicated in detail on the webinar on May 28, 2024 (link to the presentation [here](#))
  - ❑ Order quantities and calculated results are shown in MW for a given trading period.
    - ❑ The trading period on the DM remains at 60-min. from July 1, 2024. i.e. orders will still only be submitted for a given hour, with the submitted quantity in MW for the given hour corresponding to the quantity in MWh in the given hour.

*E.g. 10 MW submitted for the given hour  
→ traded energy: 10 MWh in the given hour*
- ❑ Although the possibility to submit multiple orders at once as part of automatic communication or XML import has been introduced since June 13, 2024, **until further notice it is not possible to create linked block orders when submitting multiple orders.** → Thus, order linking can only be done within individual submission of orders (in the same way as before June 13, 2024)

# 4.1 Changes in CS OTE – Short-term Electricity Markets – Day-ahead Market (DM)

## Detail of entering a standard order on DM

Until Q1/2025 only  
60-min. orders  
(from Q1/2025 60-min.  
and 15-min. orders)

Order for 24/05/2024, Buy

Header

\* Order category:  STD  PBO

\* Order type:  Buy  Sell

\* Period resolution:  60 min  15 min

\* Delivery day: 24/05/2024

\* Settlement currency: EUR

Order ID: 954629

Version: 1

Default settlement currency: EUR

\* Check for fin. security: Immediately

Participant: 8591824999905 - TESTOVA...

Comment: Enter your comment here (0 / 100)

Detail

Period	Volume	Price
00 - 01	25.0	110.00
01 - 02	18.0	109.00
02 - 03	32.0	108.00
03 - 04	28.0	107.00
04 - 05	19.0	106.00
05 - 06	35.0	105.00
06 - 07	25.0	104.00
07 - 08	28.0	103.00

Buttons: Cancel, Submit modification, Submit new

Quantity in MW for a given trading period (hour)  
Price €/MWh

Order for 24/05/2024, Sell

Header

\* Order category:  STD  PBO

\* Order type:  Buy  Sell

\* Period resolution:  60 min  15 min

\* Delivery day: 24/05/2024

\* Settlement currency: EUR

Order ID: 954630

Version: 1

Default settlement currency: EUR

\* Check for fin. security: Immediately

Participant: 8591824999905 - TESTOVA...

Comment: Enter your comment here (0 / 100)

Detail

Period	Volume	Price
00 - 01	21.0	15.00
01 - 02	39.0	16.00
02 - 03	41.0	17.00
03 - 04	16.0	18.00
04 - 05	19.0	19.00
05 - 06	25.0	20.00
06 - 07	36.0	21.00
07 - 08	23.0	22.00

Buttons: Cancel, Submit modification, Submit new

## 4.2 Changes in CS OTE – Short-term Electricity Markets – Intraday Auctions (IDA)

❑ Intraday auctions (IDA) have been launched since delivery day of June 14, 2024

❑ For the respective delivery day (D), 3 intraday auctions are held:

- ❑ **IDA1 with gate closure time at 15:00 D-1** (traded periods 00:00 – 24:00 of the day D)
- ❑ **IDA2 with gate closure time at 22:00 D-1** (traded periods 00:00 – 24:00 of the day D)
- ❑ **IDA3 with gate closure time at 10:00 D** (traded periods 12:00 – 24:00 of the day D)

*E.g. 10 MW for given hour submitted → traded energy: 10 MWh in given hour*

❑ Granularity of products at IDA:

❑ For delivery days **until June 30, 2024** (included), only 60-min. products will be traded.

❑ i.e. the last IDA in 60-min. granularity will be IDA3 with the gate closure time on June 30, 2024, at 10:00 (where periods corresponding to hours between 12:00–24:00 of June 30, 2024, will be traded)

❑ For delivery days starting **from July 1, 2024** (included), only 15-min. products will be traded.

❑ i.e. the first IDA in 15-min. granularity will be IDA1 with the gate closure time on June 30, 2024, at 15:00 (where periods corresponding to hours between 00:00–24:00 of July 01, 2024, will be traded)

*E.g. 10 MW for the given 15 minutes submitted → traded energy: 2.5 MWh in the given 15 minutes*

# 4.2 Changes in CS OTE – Short-term Electricity Markets – Intraday Auctions (IDA)

## Detail of entering a standard order at IDA

**Order for 24/05/2024 - IDA1, Buy**

**15-min. orders at IDA from July 1, 2024**

**Quantity in MW for a given trading period (trading period at IDA: until June 30, 2024 only 60-min., from July 1, 2024 only 15-min.)**  
**Price €/MWh**

**Order for 24/05/2024 - IDA1, Sell**

Period	Volume	Price
00:00	30.0	15.00
	23.0	16.00
	40.0	17.00
	39.0	18.00
01:00	29.0	19.00
	5.0	20.00
	37.0	21.00
	28.0	22.00



## 4.3 Changes in CS OTE – Short-term Electricity Markets – Continuous Intraday Market (IM)

- ❑ **Until June 30, 2024** (delivery day), it is only possible to trade **products with 60-min. granularity**



- ❑ **From 1 July, 2024** (delivery day) it will be possible to trade products with **both 15-min. and 60-min. granularity** on IM

- ❑ It will be possible to create block contracts from 60-min. contracts only
- ❑ The so-called cross product matching, i.e. the possibility to matching a product with a longer granularity with several products with a shorter granularity, will not be supported
- ❑ **Changes in the OTE-COM platform will be minimal:**
  - New 15-min. products added
  - Limiting the number of simultaneously opened contracts on the trading screen (max. 7 simultaneously opened contracts)
  - New screens and reports - new report design taking into account multiresolution display of data; ATC report removed - H2H matrix remains
  - No changes in communication
- ❑ **New version of IM mobile application (OTE-COM) - update of the app needed!**
  - From June 13, 2024, new Android and IOS versions of the OTE-COM mobile application is available which contains changes related to the deployment of 15-min. products (that will be supported on IM from July 1, 2024)

❑ As of June 13, 2024, the quantity of orders is entered in **MW** for the given trading interval:

❑ For delivery days until June 30, 2024 (included), only 60-min. products will be traded on IM

*E.g. submitted 10 MW for a given hour  
→ energy traded: 10 MWh in the given hour*

❑ For delivery days from July 1, 2024 (included), it will be possible to trade both 60-min. and 15-min. products on IM (15-min. contracts will be visible from June 30, 2024)

*E.g. submitted 10 MW for a given hour  
→ traded energy: 10 MWh in the given hour*

*or*

*E.g. submitted 10 MW for a given 15 minutes  
→ energy traded: 2,5 MWh in the given 15 min.*

# 4.3 Changes in CS OTE – Short-term Electricity Markets – Continuous Intraday Market (IM)



## Trading screen on IM

60-min. and 15-min. contracts

Trading screen IM X

Market overview XBID connected – XBID products

Contract	Bid			Ask			Trades			
	OwnQty	Qty	Price	Price	Qty	OwnQty	LastPce	LastQty	TotQty	OwnQty (B/S)
Q14-15_XB		2.4	125.00				57.95	1.6	13.7	
Q14:00-14:15_XB	10.0	10.0	200.00				19.98	7.2	14.4	
Q14:15-14:30_XB							19.98	7.2	7.2	
Q14:30-14:45_XB							19.98	7.2	7.2	
Q14:45-15:00_XB							19.98	7.2	7.2	
Q15-16_XB				51.45	3.1		88.79	1.0	9.3	
Q15:00-15:15_XB							19.97	7.3	7.3	
Q15:15-15:30_XB							19.97	7.3	7.3	
Q15:30-15:45_XB							19.97	7.3	7.3	
Q15:45-16:00_XB							19.97	7.3	7.3	
Q16-17_XB				74.88	7.8		19.96	7.4	7.4	
Q16:00-16:15_XB							19.96	7.4	7.4	
Q16:15-16:30_XB							19.96	7.4	7.4	
Q16:30-16:45_XB							19.96	7.4	7.4	
Q16:45-17:00_XB							19.96	7.4	7.4	
Q17-18_XB		7.5	19.95	109.86	10.6					

Contract detail: Q14:00-14:15\_XB

Bid				Ask			
WAPrice	AgrQty	Qty	Price	Price	Qty	AgrQty	WAPrice
200.00	10.0	10.0	200.00				

Create order

Contract: Q14:00-14:15\_XB

Buy  Sell

Order type:  Limit order  Iceberg  Block limit order

Exec. restriction:  None  FOK  IOC

Quantity [MW]: 0.0 Price [EUR/MWh]: (-)0.00

Order total qty. [MWh]:

Valid to: GFS

Comment:

Inactive

Add to basket Submit Clear form

Quantity in MW for a given trading period (trading period on IM: until June 30, 2024, 60-min., from July 1, 2024, both 60-min. and 15-min.)

Price €/MWh



# 4.3 Changes in CS OTE – Short-term Electricity Markets – Continuous Intraday Market (IM)



## IM contract filtering options

Market overview **XBID connected – XBID products**

Contract	Bid			Ask			Trades				
	OwnQty	Qty	Price	Price	Qty	OwnQty	LastPce	LastQty	TotQty	OwnQty (B/S)	
10-11_XB				0.10		200.0	200.0	0.10	50.0	50.0	50.0/50.0
11-12_XB				0.10							
12-13_XB				0.10							
13-14_XB				0.10							
14-15_XB				0.01							
15-16_XB				0.01							

Product type selection

15 min

60 min

Market overview **XBID connected – XBID products**

Contract	Bid			Ask	
	OwnQty	Qty	Price	Price	Qty
Q09:30-09:45_XB					
Q09:45-10:00_XB					
10-11_XB					
Q10:00-10:15_XB					
Q10:15-10:30_XB					
Q10:30-10:45_XB					
Q10:45-11:00_XB					
11-12_XB					
Q11:00-11:15_XB					
Q11:15-11:30_XB					
Q11:30-11:45_XB					
Q11:45-12:00_XB					

Contract selection

- Thursday, June 20, 2024
  - 09:00-10:00
    - Q09:30-09:45\_XB
    - Q09:45-10:00\_XB
  - 10:00-11:00
    - 10-11\_XB
    - Q10:00-10:15\_XB
    - Q10:15-10:30\_XB
    - Q10:30-10:45\_XB
    - Q10:45-11:00\_XB
  - 11:00-12:00
    - 11-12\_XB
    - Q11:00-11:15\_XB
    - Q11:15-11:30\_XB
    - Q11:30-11:45\_XB
    - Q11:45-12:00\_XB

Contract	Bid			Ask
	OwnQty	Qty	Price	Price
Q09:45-10:00_XB				
Q10:00-10:15_XB				
Q10:15-10:30_XB				
Q10:30-10:45_XB				
Q10:45-11:00_XB				
Q11:00-11:15_XB				

Product type selection

15 min

60 min



# 4.3 Changes in CS OTE – Short-term Electricity Markets – Continuous Intraday Market (IM)



## Trading screen on IM – back-up

OTE-W.COM ISOTESTEST Trading system OTE-COM Electricity

Personal IM Reports Settings | Logged in: Oliver Subject2 - TESTOVA... | You are here: IM | Current time: 23.05.2024 16:24:17

Trading screen IM X

Market overview XBID disconnected – Backup IM Products

Contract	Bid			Ask			Trades			
	OwnQty	Qty	Price	Price	Qty	OwnQty	LastPce	LastQty	TotQty	OwnQty (B/S)
240523_16:30-16:45										
240523_16:45-17:00										
240523_17-18										
240523_17:00-17:15										
240523_17:15-17:30				21.00	21.0	21.0				
240523_17:30-17:45				22.00	22.0	22.0				
240523_17:45-18:00		7.0	7.00	23.00	23.0	23.0				
240523_18-19	10.0	10.0	10.00	24.00	24.0	24.0				
Trading from: 22.05. 15:00 Trading to: 23.05. 17:55										
240523_18:00-18:15		15.0	15.00							
240523_18:15-18:30		20.0	20.00							
240523_18:30-18:45		25.0	25.00							
240523_18:45-19:00				4.00	8.0	8.0				
240523_19-20		11.0	11.00							

Contract detail: 240523\_18-19

Bid				Ask			
WAPrice	AgrQty	Qty	Price	Price	Qty	AgrQty	WAPrice
10.00	10.0	10.0	10.00	24.00	24.0	24.0	24.00

Create order

Contract: 240523\_18-19

Buy  Sell

Order type:  Limit order  Iceberg  Block limit order

Exec. restriction:  None  FOK  IOC

Quantity [MW]: 0.0 Price [EUR/MWh]: (-)30.00

Order total qty. [MW]:

Valid to: GFS

Comment:

Inactive

Market overview with block orders

Trading history

Contract: 240523\_18-19 Update

Own orders

Contract: 240523\_18-19 FS IM 16:24: 8,718.609,54K€ FS Status

ID	Contract	Type	Ask(Qty)	Bid(Qty)	Price	State	Valid to	Comment
10,399,301	240523_18-19	LMT	10.0	10.0	10.00	Active		
10,399,303	240523_18-19	LMT	24.0		24.00	Active		

Audit log


Time	Prior.	Type	Description
5/23/2024 16:20:43	Middle	Private	Unsuccessful order creation: The reason of the possible matching with own order 10399292.
5/23/2024 16:20:13	Low	Private	New Order 23MW@23EUR on the contract 240523_17:45-18:00; ID: 10399304.
5/23/2024 16:20:13	Low	Private	New Order 24MW@24EUR on the contract 240523_18-19; ID: 10399303.
5/23/2024 16:20:13	Low	Private	New Order 7MW@7EUR on the contract 240523_17:45-18:00; ID: 10399302.
5/23/2024 16:20:13	Low	Private	New Order 10MW@10EUR on the contract 240523_18-19; ID: 10399301.
5/23/2024 16:20:13	Low	Private	New Order 5MW@5EUR on the contract 240523_17:45-18:00; ID: 10399300.



- ❑ Mobile application IM (OTE-COM)
  - ❑ Need to be updated to the latest version 1.6.2\_v1
  - ❑ Version information is available in section *Contact Support*

← Contact Support

**OTE**  **COM**  
**POWER**

 You can contact our hotline using communication channels shown below.

### Hotline Contacts

Phone:  
(+420) 234 686 150

Email:  
market@ote-cr.cz

Web:  
www.ote-cr.cz

Manual:  
 Mobile application manual

Application Version:  
1.6.2\_v1



### Registration of Realization Diagrams (RRD)

- ❑ From June 13, 2024 a new interface was deployed, i.e. for the delivery day of June 14, 2024 (and all subsequent days), it is necessary to **send RRD data in the new CIM format**, at the same time it is possible to **create new templates of realization diagrams**:

*e.g. submitted 10 MW for a given hour  
→ energy traded: 10 MWh in the given hour*

- ❑ for delivery days **until June 30, 2024 (included) in 60-min. resolution,**
- ❑ for delivery days starting **from July 1, 2024 and beyond in 15-min. resolution,**
  - ❑ From June 13, 2024 it is also possible to send RRD and create templates of realization diagrams for delivery days July 1, 2024 and onwards in 15-min. resolution.

*e.g. submitted 10 MW for a given 15-min.  
→ energy traded: 2,5 MWh in the given 15-min*

- ❑ From June 13, 2024, RRD **data is entered in MW** for the given trading period
- ❑ We remind you that as part of the shutdown maintenance from June 12, 2024 to June 13, 2024, the following happened:
  - ❑ RRDs entered before June 13, 2024 for the delivery day July 1, 2024 and onwards in 60-min. resolution have been annulled.
  - ❑ The validity of the original templates of the realization diagrams was set to be terminated as of June 30, 2024 in the case that the validity<sup>31</sup> of the original templates exceeded this date.

# 5. Changes in Automatic Communication



**Reminder**

Presented on the webinar  
on May 28, 2024



## 5. Changes in Automatic Communication

❑ From June 13, 2024, a new format according to the CIM standard will be used in automatic communication to capacity data request on auction markets and in realization diagrams



❑ Please pay increased attention to the transition to the new CIM format!!!

- ❑ Document describing the changes related to the transition to the CIM format is [here](#)
- ❑ MPs, who use **client-server** communication with OTE, must call the new *ScheduleMarketService* and *StatusRequestMarketService* services for the production environment.
- ❑ MPs, who use **server-server** communication with OTE, must additionally proceed with the following for the production environment:

- ❑ on MPs' side, implementation of 2 new callback services (can be as one shared endpoint) *ScheduleMarketCallbackService* and *StatusRequestMarketCallbackService*, to which all CIM messages will be delivered,
  - ❑ fill in a new form for automatic communication (the form can be downloaded [here](#)), where MPs will state the relevant endpoints of the new CIM callback services
- The completed form must be sent to [elektro@ote-cr.cz](mailto:elektro@ote-cr.cz) or to [market@ote-cr.cz](mailto:market@ote-cr.cz).



## 5. Changes in Automatic Communication

### Part II. – Type of communication



Client – server (WS or REST)
  **Server – server (WS)**
 E-mail

### Part III. – Required information to access on OTE server (WS or REST)

IP address:

Certificate:

### Part IV. – Required information to access on external subject web service server (WS)

IP address:

Port:

URL:



**CIM\_STA: https://firma.cz/statusrequestmarketcallbackservice**

**CIM\_SCH: https://firma.cz/schedulemarketcallbackservice**

### Part V. – Channel type for message delivery and their format (WS)



Message code	Channel of message delivery	Format (XML/EDI/TXT)
<b>C00-CZZ</b>	<b>HTTP CIM</b>	<b>XML</b>
<input type="text"/>	<input type="text"/>	<input type="text"/>
<input type="text"/>	<input type="text"/>	<input type="text"/>
<input type="text"/>	<input type="text"/>	<input type="text"/>
<input type="text"/>	<input type="text"/>	<input type="text"/>



→ The completed form for server-server communication with OTE must be sent to [elektro@ote-cr.cz](mailto:elektro@ote-cr.cz) or [market@ote-cr.cz](mailto:market@ote-cr.cz).

# 6. New Version of Signature Component OTE PKI in CS OTE



**Reminder**

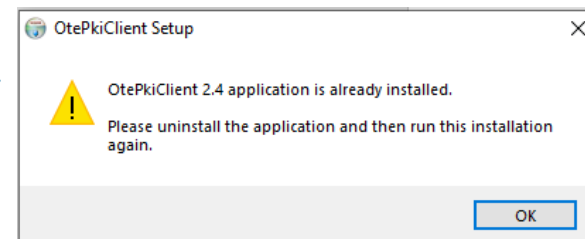
Presented on the webinar  
on May 28, 2024

- ❑ From June 13, 2024 along with the transition to the new CS OTE interface, each CS OTE user using the signature OTE PKI component will need to install its new version 2.6. Without this update, it will not be possible to perform some operations in the CS OTE system from June 13, 2024.



- ❑ Installation of a new version of the signature OTE PKI component:
  - ❑ Manual for verifying the currently installed version and reinstalling [here](#)
  - ❑ Installation of the new version of the signature OTE PKI component is done in 2 steps:
    1. Uninstallation of the original version (2.4)
    2. Installation of the new version (2.6) – download [here](#)

*Message that appears when the original version has not been uninstalled (i.e. step 1 was not performed)*



## 6. New Version of Signature Component OTE PKI in CS OTE

❑ There are two possible ways to verify the currently installed version of the signature OTE PKI component:

1) **Start menu** → search for '**Control Panel**' → select '**Programs and Uninstall a program**' → search for '**OtePkiClient**' and you will see the version in the last column, see screenshot below and version 2.6.

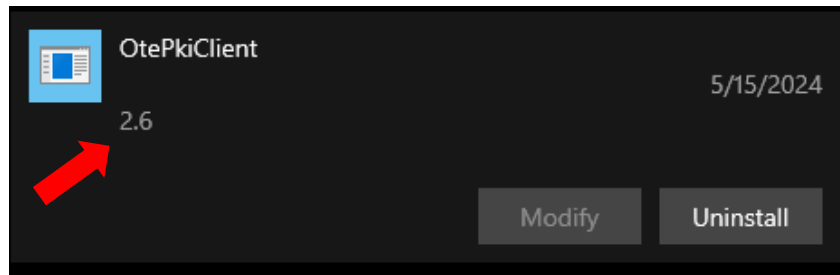


Organize ▾ Uninstall/Change

Name	Publisher	Installed On	Size	Version
 OtePkiClient		5/15/2024		2.6

A red arrow points to the 'Uninstall/Change' button in the top right corner of the window.

2) **Start menu** → search for "**Apps and Features**" → search for the "**OtePkiClient**" application and view the details of the application (by clicking on the application) - the number below the application name indicates the version of the signature OTE PKI component.



→ If you still have version 2.4 installed, you need to uninstall this version and then install the new version 2.6 (download [here](#))

# 7. Summary Plan of Changes Deployment

## 7.1 Summary Plan of Changes Deployment

- Summary plan of changes deployment in June 2024 in the individual areas of OTE:

OTE area	June 13, 2024 (trading day)	June 25, 2024	June 26, 2024	June 30, 2024	July 1, 2024 (delivery day)
<b>DM</b>	<ul style="list-style-type: none"> <li>• New interface</li> <li>• Changes (AC, units, orders...)</li> </ul>				<ul style="list-style-type: none"> <li>• DM remains at 60-min.</li> </ul>
<b>IDA</b>	<ul style="list-style-type: none"> <li>• IDA launch</li> <li>• only 60-min. products</li> </ul>				<ul style="list-style-type: none"> <li>• IDA only 15-min. products</li> </ul>
<b>IM</b>					<ul style="list-style-type: none"> <li>• IM possible both 60-min. and 15-min. products</li> </ul>
<b>RRD</b>	<ul style="list-style-type: none"> <li>• New interface (RRD data in new CIM format)</li> <li>• New RD templates</li> </ul>			<ul style="list-style-type: none"> <li>• Expiration of original RD templates</li> </ul>	<ul style="list-style-type: none"> <li>• RRD and RD templates in 15-min. resolution</li> </ul>
<b>Imbalance Settlement</b>	<ul style="list-style-type: none"> <li>• New interface (already for imbalance settlement of June 12, 2024)</li> </ul>				<ul style="list-style-type: none"> <li>• Imbalance settlement in 15-min. resolution</li> </ul>
<b>Financial settlement &amp; Risk Management</b>	<ul style="list-style-type: none"> <li>• Extension of relevant reports and AC with IDA</li> </ul>	<ul style="list-style-type: none"> <li>• New user interface</li> </ul>	<ul style="list-style-type: none"> <li>• Risk exposure calculation (for DD July 1, 2024 and onwards) in 15-min.</li> </ul>		<ul style="list-style-type: none"> <li>• Data for Financial Settlement in 15-min. resolution</li> </ul>
<b>CDS electricity</b>		<ul style="list-style-type: none"> <li>• New user interface</li> </ul>	<ul style="list-style-type: none"> <li>• Prediction (for DD July 1, 2024 and onwards) in 15-min.</li> </ul>		<ul style="list-style-type: none"> <li>• Profile metering data in 15-min. resolution</li> </ul>
<b>CDS gas</b>		<ul style="list-style-type: none"> <li>• New user interface for CDS/PDT forms</li> </ul>			
<b>Public OTE</b>	<ul style="list-style-type: none"> <li>• Extension of web with IDA section</li> </ul>				<ul style="list-style-type: none"> <li>• Data displayed in 15-min. resolution (except DM data)</li> </ul>

## 7.2 Summary Plan of 15-min. Trading and Imbalance Period Deployment

### Introduction of 15-min. products in short-term electricity markets

	2024		2025
Imbalance Settlement Period (ISP)	60-min. ISP	15-min. ISP	
Day-ahead Market (DM)	60-min. products		15-min. and 60-min. products
Continuous Intraday Market (IM)	60-min. products	15-min. and 60-min. products	
Intraday Auction (IDA)	<div style="background-color: #ccc; border: 1px solid #000; width: 100%; height: 100%; display: flex; align-items: center; justify-content: center;"> <span style="font-size: 8px;">Delivery Day</span> </div>	60-min. products	only 15-min. products

June 14, 2024

July 1, 2024

Q1/2025



# **8. Compensation of Electricity and Gas Prices**

**Request for Payment of Compensation for a  
Specified Period**

### Regulation No. 5/2023 Coll. on compensations provided for the supply of electricity and gas at set prices

- ❑ Pursuant to Article 14a, paragraph 1, the obligation of a trader who supplied electricity or gas in a specified period to a point of delivery or a point of consumption at a specified price to **submit a request for payment of compensation for the specified period by June 28, 2024**
- ❑ Manual for submitting an application for compensation of supply prices for a specified period (annual settlement) according to Government Regulation No. 5/2023 Coll. – <https://www.ote-cr.cz/cs/dokumentace/kompenzace> (Czech only)
- ❑ **Opinion of the Chamber of Auditors** - draft of recommended procedures for verifying data in a request for compensation for the electricity and gas supply at set prices, example of a report on the verification of a request for payment of compensation:
  - ❑ <https://www.kacr.cz/overovani-udaju-v-zadosti-o-kompenzaci-na-dodavku-elektřiny-a-plynu-za-stanovené-ceny> (Czech only)
- ❑ **With regard to the deployed changes in connection with the implementation of 15-min. settlement and trading periods, we strongly recommend submitting this application in the CS OTE system before the deadline of June 28, 2024!!!**



# 9. Frequent Q&As

### ❑ Selected frequent questions and answers:

#### 1) Questions related to submitting the quantity in MW and traded energy in MWh after the introduction of 15-min. products (on IDA and IM) and 15-min. imbalance settlement period

- ***Is the example in the bubble correct?***

*E.g. 10 MW for the given 15 minutes submitted  
→ traded energy: 2.5 MWh in the given 15 minutes*

→ Yes, the example is correct. From 1 July 2024, products with 15-min. resolution will be traded on IM and IDA. The quantity will be submitted in MW. The consequence of this is that if you trade 10 MW in a given 15-min. period, you trade 2.5 MWh in the given 15-min. period.

- ***If I trade 10 MW in one quarter-hour out of 4 of an hour, then 2.5 MWh should be traded per the hour, or not?***

→ No, it should not. From July 1, 2024, not only 15-min. products will be traded on IDA and IM and data for ERD will be entered in 15-min. resolution, but also 15-min. imbalance settlement period will be introduced. Meaning that **if you submit (and successfully trade) 10 MW in one quarter-hour out of 4 of an hour, then the traded energy will be 2.5 MWh in that quarter-hour and in the remaining quarter-hours the traded energy will be 0 MWh.**



**2) Will it be possible to obtain separate contracts from individual IDAs using automatic communication? Currently, the prices can be obtained separately, but the volume quantity is aggregated.**

→ Unfortunately, the data of the IDA Results report by individual IDA sessions (IDA1, IDA2, IDA3) are not available via automatic communication. Only the copies of the individual orders with the matched quantity are available, then the general results for the area and the Final plan. From this, the necessary data can be obtained by calculation on the MP's side. In any case, we have registered the proposal for change and will consider its implementation.

**3) Do the changes in the format for automatic communication also apply to messages 944 - 946 (prices from the Day-Ahead Market)? Or do these processes remain unchanged?**

→ A more detailed specification can be found in the document at this link: [https://www.ote-cr.cz/en/documentation/electricity-documentation/d1-4-4\\_en\\_format\\_messages\\_xml\\_dm-ida-soi-fs-cds-rrd\\_d\\_en.pdf](https://www.ote-cr.cz/en/documentation/electricity-documentation/d1-4-4_en_format_messages_xml_dm-ida-soi-fs-cds-rrd_d_en.pdf)

→ Furthermore, we warn the market participants that in the case of provided data profile values in the sense of energy consumption, resp. energy purchase in the case of business data, a number with a minus sign (negative number) is used. In general, **prices, amounts and quantities listed in individual profiles can take on positive and negative values depending on the type of profile.** The information, which value is returned in the profile, is defined either in the Profile Description itself or this information is specified in more detail in the relevant documentation.



# 10. Conclusion

## 10.1 Further important information

---

- ❑ The individual changes and their impact were already presented in detail at the webinars held on February 13, 2024, March 7, 2024, and May 28, 2024 (presentations from the webinars and detailed information, including documentation, are available [here](#)).
- ❑ **We thank the market participants for persistently testing the upcoming changes in CS OTE and apologize for any complications during testing when fixing problems that appeared during testing.**
- ❑ Testing of upcoming changes in CS OTE continues according to the schedule listed [here](#).
- ❑ **Outlook for the use of test environments:**
  - ❑ **Sandbox** (original test environment, <https://portal.sand.ote-cr.cz/>)
    - ❑ From June 19, 2024, changes reflecting the production environment from July 1, 2024, have been deployed on the Sandbox test environment (but the state of production from July 1, 2024 has not been reflected yet, i.e. 15-min. products have not been activated). From June 27, 2024 Sandbox test environment will fully reflect the state on the production environment from July 1, 2024 (i.e. 15-min. products activated).
    - ❑ From July 1, 2024, the Sandbox test environment will **reflect the current state on the production environment (i.e. the Sandbox environment will be the primary environment for testing the state on production)**
  - ❑ **Sandbox-15min** (<https://portal.isotetest.ote-cr.cz/>)
    - ❑ On the *Sandbox-15min*. test environment further planned changes will be gradually deployed for testing in the following months (with planned implementation at the end of 2024 / beginning of 2025)

## 10.2 Any questions?

- ❑ Follow the market operator's website for up-to-date information!
- ❑ Detailed information on the mentioned changes, including presentations from webinars and documentation, can be found on the OTE website: <https://www.ote-cr.cz/en/documentation/electricity-documentation/information-to-switch-to-15-min-interval>



- ❑ If you have any questions regarding metering data or imbalance settlement, please send an e-mail to [elektro@ote-cr.cz](mailto:elektro@ote-cr.cz).
- ❑ If you have any questions related to market platforms (DM, IM, IDA) or RRD, please contact [market@ote-cr.cz](mailto:market@ote-cr.cz).



## 10.3 List of abbreviations

List of abbreviations used			
AC	Automatic Communication	OTE	OTE, a.s.
CDS	Centre of Data Services	PDT	Point of Delivery/Transfer
CS OTE	Central System of OTE	PKI	Public Key Infrastructure
D	Delivery day	RRD	Registration of Realization Diagrams
DM	Day-Ahead Market	WSDL	Web Services Description Language
IDA	Intraday Auction	XML	Extensible Markup Language
IM	Continuous Intraday Market	XSD	XML Schema Definition

[www.ote-cr.cz](http://www.ote-cr.cz)

**OTE**  Combining opportunities with markets