



**IN MOBILE
DEVICE**

IM Power Mobile App (Continuous Intraday Market)

OTE, a.s.

Last update: August 2024



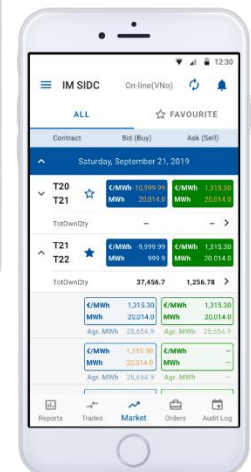
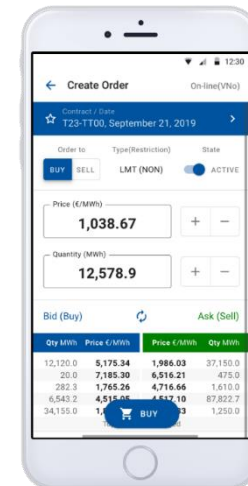
Mobile and Safe: on tablet or smartphone



Trading on the continuous intraday power market is also possible through the mobile application OTE IM Power.

The OTE IM Power application complements the tools: OTE-COM and automatic communication.

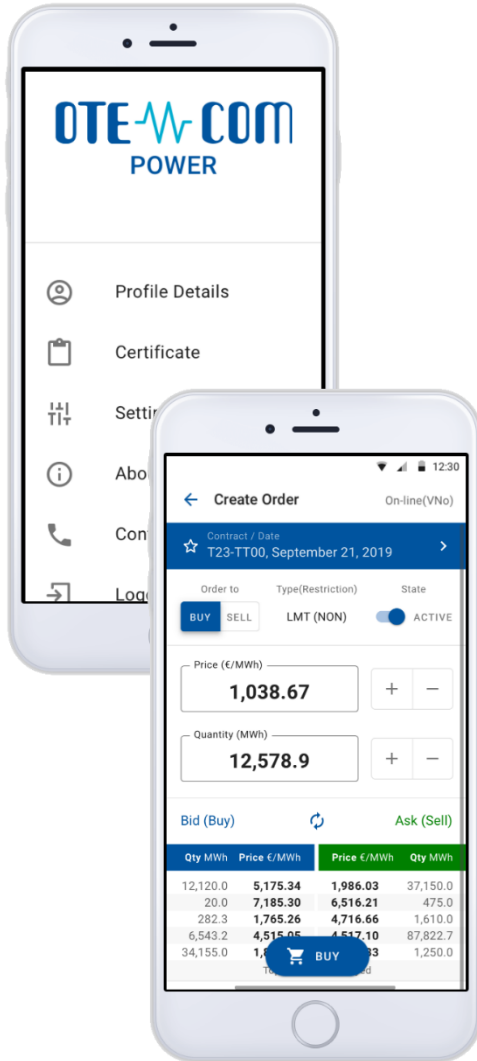
When trading, you can be logged in to the OTE-COM Power desktop application and simultaneously to the mobile application on all registered mobile devices.





Mobile App IM Power Benefits

OTE IM POWER



App with various features...

Settlement and
balance overview

Order
management

Current market
situation
overview

Back-up access in case primary access channels are unavailable

Intuitive, fast and secure to use

Secured and quick
access to IM Electricity
platform

Customizable
user settings

Optimized for
mobile devices

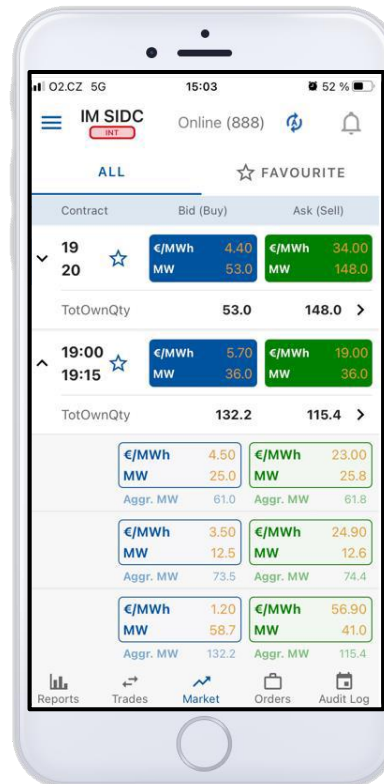
Two Access Options Available

Active Access



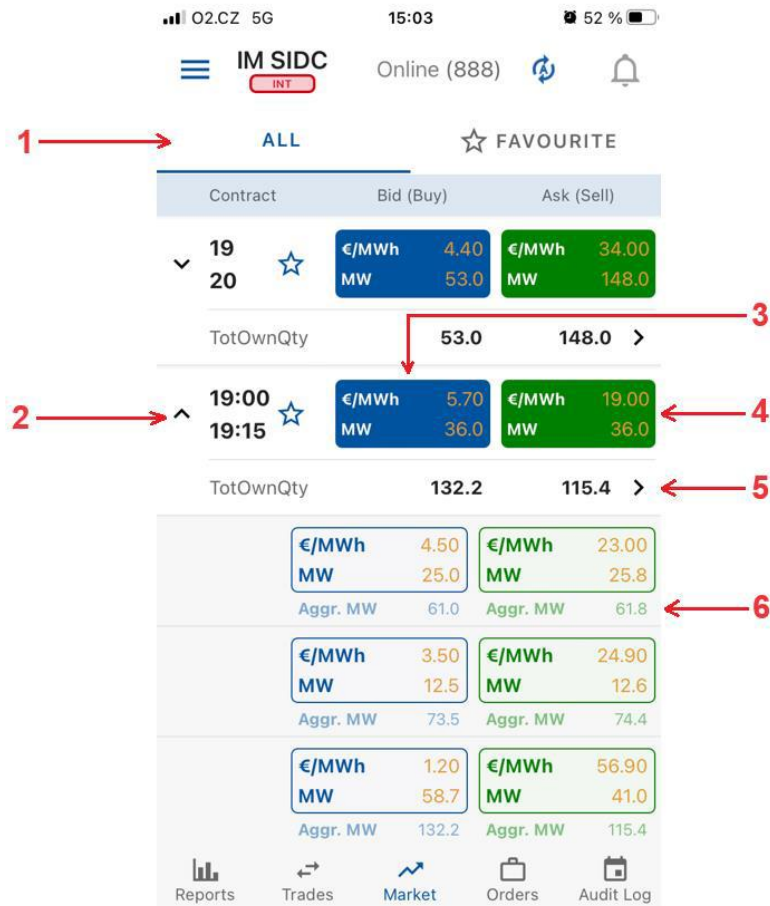
Passive Access

- Access to the trading platform and trading results – read only
- **Order management:** Create, Deactivate, Modify, Cancel (with minor differences compared to OTE-COM platform)



- Access to the trading platform and trading results – read only
- Does not allow to manage orders

MARKET screen

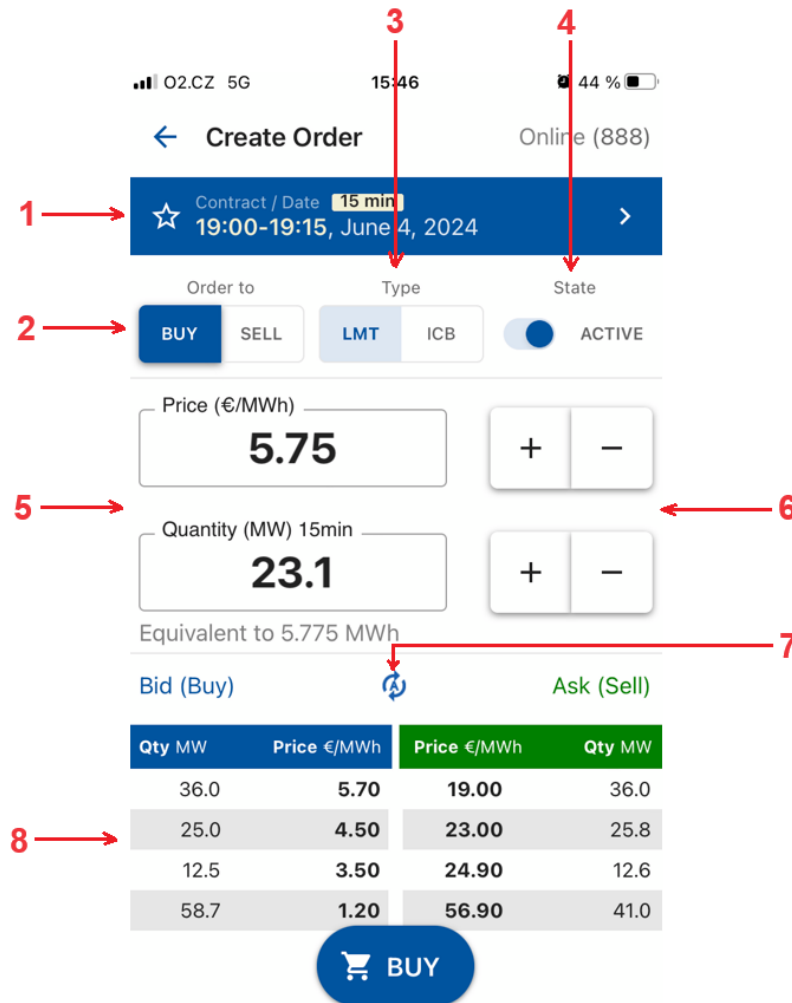


Contract	Bid (Buy)	Ask (Sell)
19 20	€/MWh 4.40 MW 53.0	€/MWh 34.00 MW 148.0
TotOwnQty	53.0	148.0
19:00 19:15	€/MWh 5.70 MW 36.0	€/MWh 19.00 MW 36.0
TotOwnQty	132.2	115.4
	€/MWh 4.50 MW 25.0 Aggr. MW 61.0	€/MWh 23.00 MW 25.8 Aggr. MW 61.8
	€/MWh 3.50 MW 12.5 Aggr. MW 73.5	€/MWh 24.90 MW 12.6 Aggr. MW 74.4
	€/MWh 1.20 MW 58.7 Aggr. MW 132.2	€/MWh 56.90 MW 41.0 Aggr. MW 115.4

1. Filtering between all and favorites contracts
2. The name of the contract with the possibility of opening/closing of the market depth
3. Best order to buy – after clicking user is forwarded to the *Create Order screen* – create order Sell / Quick Accept
4. Best order to sell - after clicking user is forwarded to the *Create Order screen* – create order Buy / Quick Accept
5. Total Own Quantity + after clicking user is forwarded to *Orders by contract screen*
6. Aggregated quantity (MW)

News – contains information messages, also signals new VIP news (colored icon indicates unread messages)

CREATE ORDER screen



1 → Contract / Date 15 min
19:00-19:15, June 4, 2024

2 → Order to: BUY SELL Type: LMT ICB State: ACTIVE

3 → 15 min

4 → ACTIVE

5 → Price (€/MWh): 5.75

6 → Quantity (MW) 15min: 23.1

7 → Equivalent to 5.775 MWh

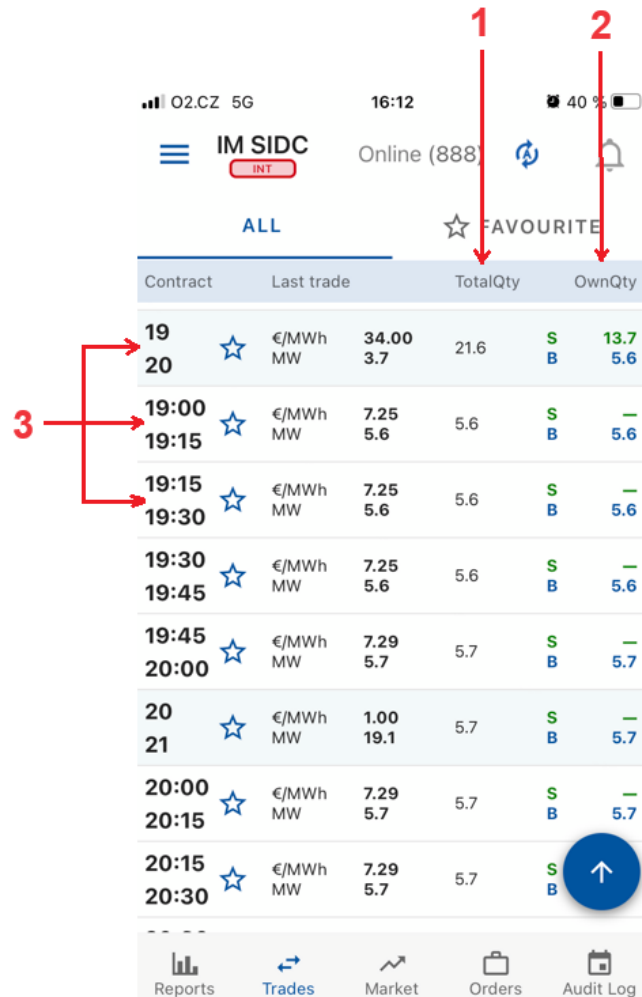
8 → Bid (Buy) / Ask (Sell) table

Qty MW	Price €/MWh	Price €/MWh	Qty MW
36.0	5.70	19.00	36.0
25.0	4.50	23.00	25.8
12.5	3.50	24.90	12.6
58.7	1.20	56.90	41.0

BUY

1. Date and name of the contract – contract selection
2. Order to – switch button to select the buy/sell operation
3. Type – display of order type and its restriction (LMT/ICB/BLK, (NON)/(FOK)/(IOC)/(AON))
4. State – switch button for setting the active / inactive order
5. Quantity / price setting field using the keypad
6. Quantity / price setting buttons
7. Update content manually
8. View of a maximum five best orders to buy and sell

TRADES screen



Contract	Last trade		TotalQty		OwnQty
19 20	☆ €/MWh MW	34.00 3.7	21.6	S B	13.7 5.6
19:00 19:15	☆ €/MWh MW	7.25 5.6	5.6	S B	— 5.6
19:15 19:30	☆ €/MWh MW	7.25 5.6	5.6	S B	— 5.6
19:30 19:45	☆ €/MWh MW	7.25 5.6	5.6	S B	— 5.6
19:45 20:00	☆ €/MWh MW	7.29 5.7	5.7	S B	— 5.7
20 21	☆ €/MWh MW	1.00 19.1	5.7	S B	— 5.7
20:00 20:15	☆ €/MWh MW	7.29 5.7	5.7	S B	— 5.7
20:15 20:30	☆ €/MWh MW	7.29 5.7	5.7	S B	— 5.7

1. TotalQty – quantity of all trades created on a given contract in MW
2. TotOwnQty – Total own quantity
 - The total quantity sold, calculated as the sum of all trades for a given contract where the participant acts on the **sales** side in MW
 - The total quantity purchased, calculated as the sum of the quantity of all trades for a given contract where the participant acts on the **purchase** side in MW
3. Click on the contract for displaying the Trading History screen

Difference between SIDC and Backup IM

02.CZ 5G 15:03 52%

IM SIDC Online (888)

ALL ☆ FAVOURITE

Contract	Bid (Buy)	Ask (Sell)
19	€/MWh 4.40	€/MWh 34.00
20	MW 53.0	MW 148.0
TotOwnQty		53.0 148.0 >
19:00	€/MWh 5.70	€/MWh 19.00
19:15	MW 36.0	MW 36.0
TotOwnQty		132.2 115.4 >

€/MWh 4.50	€/MWh 23.00
MW 25.0	MW 25.8
Aggr. MW 61.0	Aggr. MW 61.8
€/MWh 3.50	€/MWh 24.90
MW 12.5	MW 12.6
Aggr. MW 73.5	Aggr. MW 74.4
€/MWh 1.20	€/MWh 56.90
MW 58.7	MW 41.0
Aggr. MW 132.2	Aggr. MW 115.4

Reports Trades Market Orders Audit Log

02.CZ 5G 17:01 27%

Local IM Online (888)

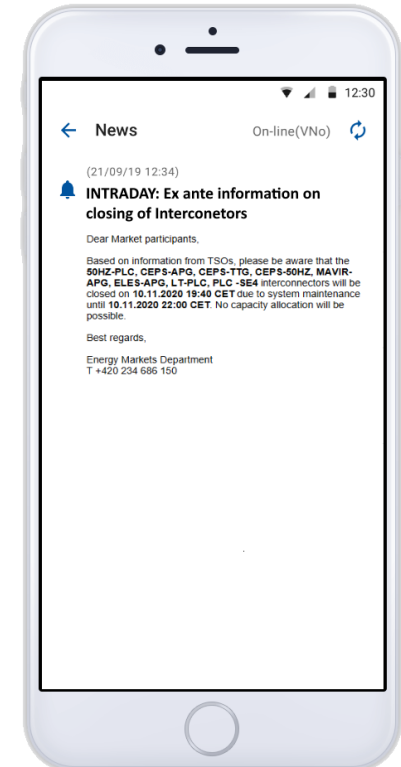
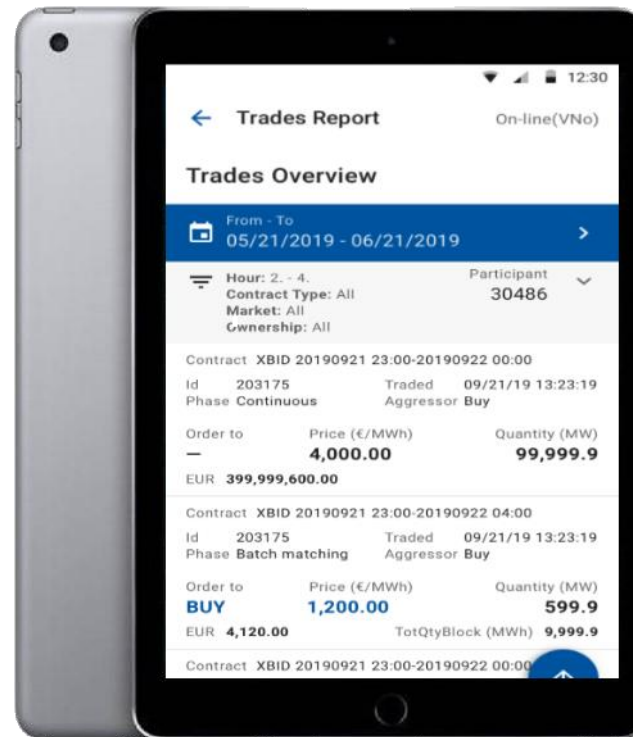
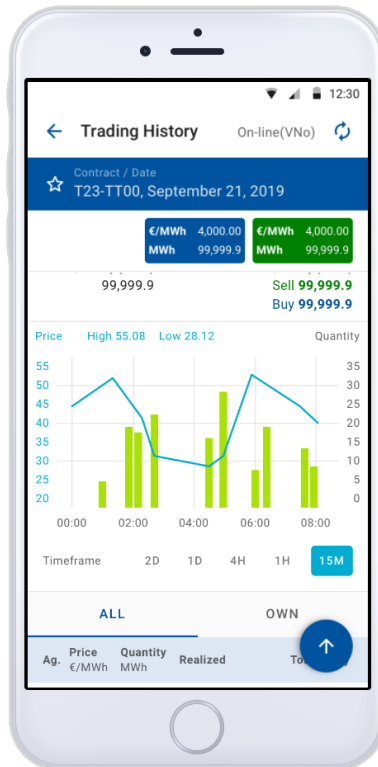
ALL ☆ FAVOURITE

Contract	Bid (Buy)	Ask (Sell)
19	€/MWh —	€/MWh —
20	MW —	MW —
TotOwnQty		— — >
19:00	€/MWh —	€/MWh —
19:15	MW —	MW —
TotOwnQty		— — >

€/MWh —	€/MWh —
MW —	MW —
Aggr. MW —	Aggr. MW —
€/MWh —	€/MWh —
MW —	MW —
Aggr. MW —	Aggr. MW —
€/MWh —	€/MWh —
MW —	MW —
Aggr. MW —	Aggr. MW —

Reports Trades Market Orders Audit Log

Examples of other features



- Customizable refresh rate.
- Detailed app description is available in [user manual](#).
- Fast internet connection required.

Application availability

- OTE IM Power application is available for both Android and iOS
 - Google Play
<https://play.google.com/store/apps/details?id=cz.otecr.mobile.vdt.production>



- AppStore
<https://apps.apple.com/us/app/ote-im-power/id1536961358>



- More information is available on our [website](#) and in [user manual](#).
- For further information, please contact us:
 - market@ote-cr.cz
 - +420 234 686 150

market@ote-cr.cz
+420 234 686 150

www.ote-cr.cz

OTE  Combining opportunities with markets